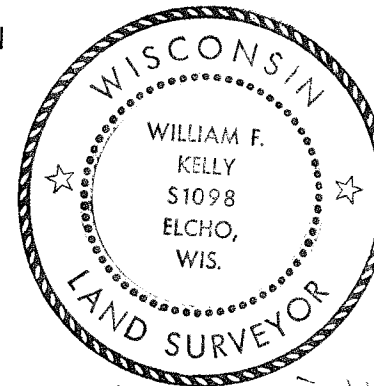


CERTIFIED LAND CORNER RESTORATION

Index No. N-1

State of Wisconsin }  
County of LANGLADE } ss.

History of original corner establishment:  
GRANITE STONE SET IN THE 1920's.



*William F. Kelly*

I WILLIAM F. KELLY, do hereby certify that on the 14th day of FEBRUARY, 1975, I found evidence of the SECTION corner of SECTIONS 13, 18, 24, 19 Township 31, North, Range 8 & 9 EAST, Fourth Principal Meridian, as described hereon; and that from this evidence I established a new monument and accessories as described hereon to perpetuate the original location of this corner.

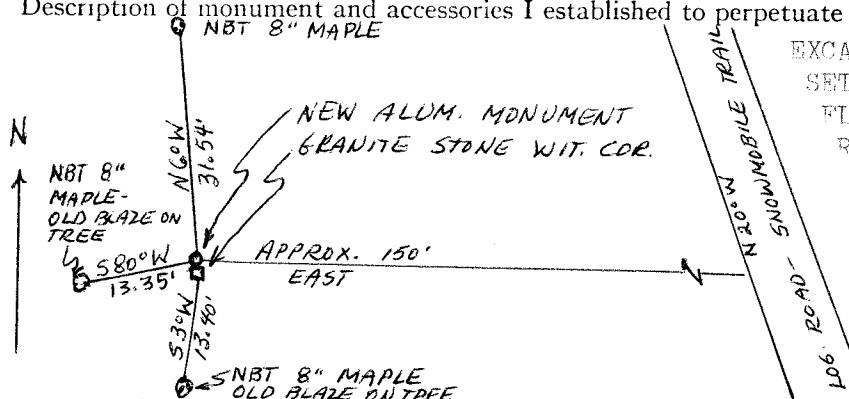
Description of corner evidence found:  
LOCATED 6 x 6 GRANITE STONE LYING ON ITS SIDE DUE TO FROST ACTION. LINES BLAZED E-W-N-S OF CORNER LOCATION.

Resident witnesses:

FREDRICK OHLMANN

(SEE OVER) →

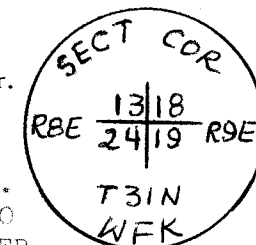
Description of monument and accessories I established to perpetuate the original location of this corner.



EXCAVATED STONE MONUMENT AND SET NEW ALUMINUM MONUMENT FLUSH WITH GROUND AS CORNER. RESET THE STONE ADJACENT TO MONUMENT AS WITNESS CORNER.

THIS CORNER IS IN A WOODED AREA. SOIL IS HEAVY CLAY. WATER TABLE IS WITHIN 2' OF GROUND SURFACE.

NOTE: NEW BEARING TREES SCRIPED NBT AND MARKED WITH A + AT BASE.



Dated at ELCHO, Wis., this 14th day of FEBRUARY, 1975.

Signature William F. Kelly Title REGISTERED LAND SURVEYOR Registration No. 1008  
(County Surveyor, Registered Land Surveyor, or other duly authorized official)

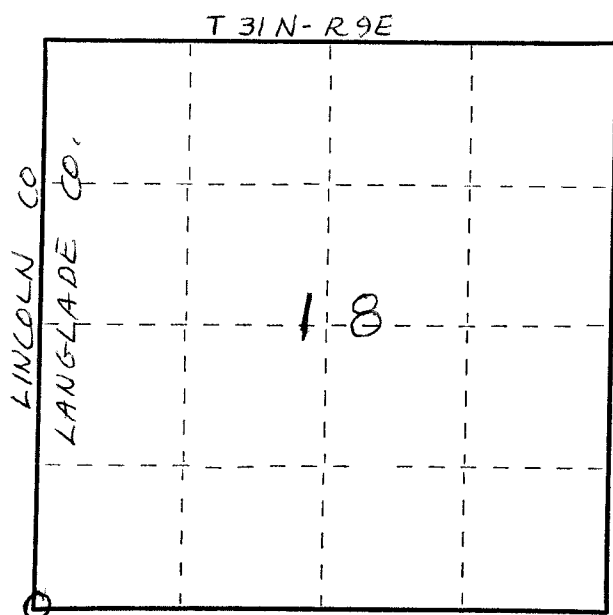
Office of Register of Deeds, County of \_\_\_\_\_, I hereby certify that the within instrument was filed in this office for record on the \_\_\_\_\_ day of \_\_\_\_\_, 19\_\_\_\_ at \_\_\_\_\_ o'clock \_\_\_\_\_ M.

(Register of Deeds)

By \_\_\_\_\_ Deputy

FORM 985 H. C. MILLER CO., MILWAUKEE

4316813000



○ = Corner monument restored.

43108130000

BROOKS 196

"ORIG. BT STANDING. SET RED GRANITE SONE 8x8x48 WITH  
+ ON TOP"