

# LANGLADE COUNTY U.S. PUBLIC LAND CORNER RESTORATION

The South Quarter corner of Section 5, T. 31 N., R. 09 E., Langlade County, WI.

**Corner was: (check all that apply)**

4310905 0020

- Restored through acceptance of an obliterated evidence location.
- Restored through acceptance of a found perpetuated location.
- Determined to be lost and re-established through proportionate methods.
  - Show bearings and distances to PLSS corners used for proportioning, and show original distances).
  - Restored/recovered/re-established in a location that differs from a previously established position.
- (Show difference in plan view below).
- Check here if additional information is shown on the reverse side of this form.

**Describe record evidence, recovered physical evidence, occupational evidence, testimonial evidence and all other evidence considered in the recovery/restoration of the corner.**

The original corner was established in 1859 by Hiram C. Fellows. Original bearing trees: hemlock, 10", N18W, 10 links and a hemlock, 36", S44E, 9 links.

There are no records on this corner since the original government survey. 12/18/14 D. Tlusty Rick DeDyne, re-established this corner by single proportionate method, distances to corners used for proportioning are shown below. Set the monument described below.



**Physical description of the monument set:**

- Set a 1" x 36" iron pipe, about flush, for the corner.
- Set a 6' steel channel post with "Langlade County Forest Boundary" sign, 0.4' East of corner monument.
- Corner falls about 135' north of a logging road.

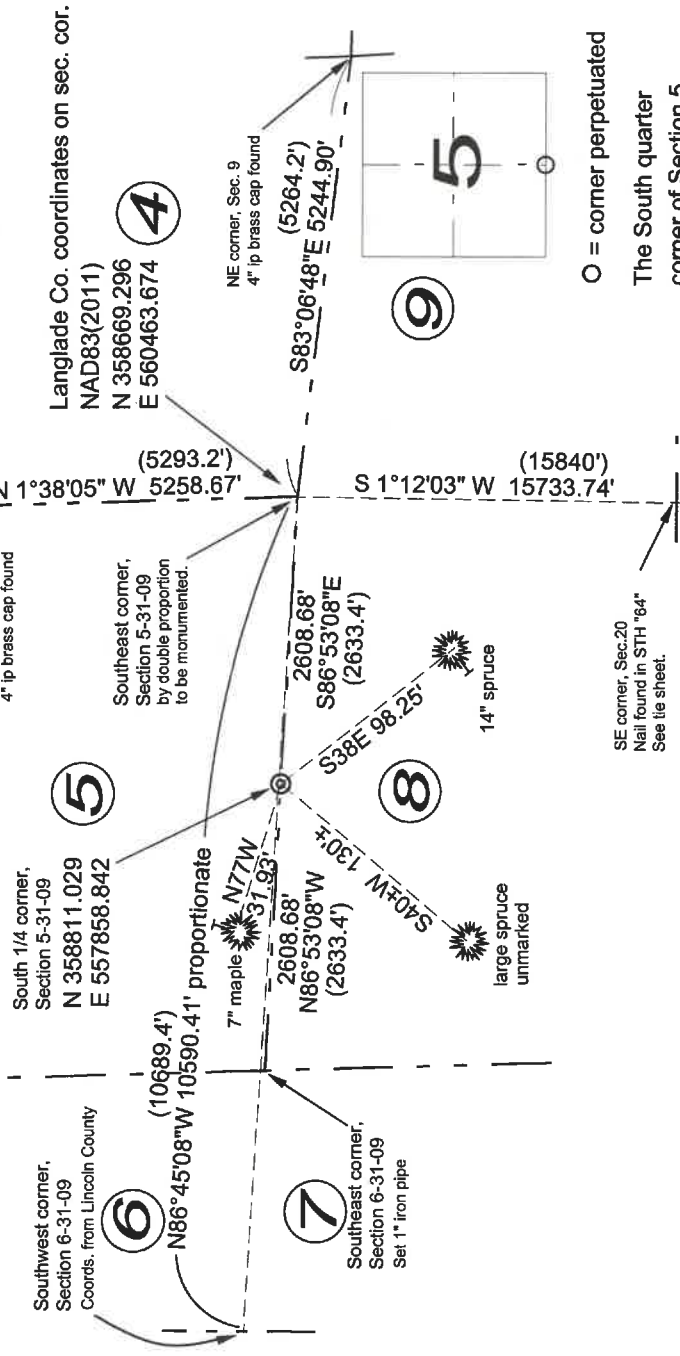
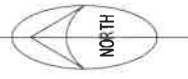
**Describe the accessories used to perpetuate the corner. Include a plan view drawing and accessories found/set. Describe measuring point on bearing trees. Show any topographic features that would aid in future recovery of the corner.**

(000.0') original government survey distance

The bearings magnetic with hand compass; other bearings are Langlade County grid bearings.

Bearing tree distances are measured to an aluminum nail in a low side blaze on the right side of the trees, as viewed from the corner. Trees have bearing tree signs facing the corner and are painted blue.

Field book: FB 20-57



Index No. E 7 31-09

O = corner perpetuated  
 The South quarter corner of Section 5, T. 31 N., R. 09 E., Langlade County, WI

I, David E. Tlusty, Registered Land Surveyor, as Langlade County Surveyor, certify that the corner location on this record was determined by me and that this U.S. Public Land Survey Monument Record is correct to the best of my knowledge and belief.