

# LANGLADE COUNTY U.S. PUBLIC LAND CORNER RESTORATION

The Southeast corner of Section 6, T. 31 N., R. 09 E., Langlade County, WI.

**Corner was: (check all that apply)**

- Restored through acceptance of an obliterated evidence location.
- Restored through acceptance of a found perpetuated location.
- Determined to be lost and re-established through proportionate methods.
- Show bearings and distances to PLSS corners used for proportioning, and show original distances).
- Restored/recovered/re-established in a location that differs from a previously established position.
- (Show difference in plan view below).
- Check here if additional information is shown on the reverse side of this form.

4310906 0000

**Describe record evidence, recovered physical evidence, occupational evidence, testimonial evidence and all other evidence considered in the recovery/restoration of the corner.**

The original corner was established in 1859 by Hiram C. Fellows. Original bearing trees: birch, 10", S58E, 42 links and a birch, 9", N45W, 10 links.

There are no records on this corner since the original government survey. 12/18/14 D. Tlusty Rick DeDyne, re-established this corner by double proportionate method, distances to corners used for proportioning are shown below. Set the monument described below.

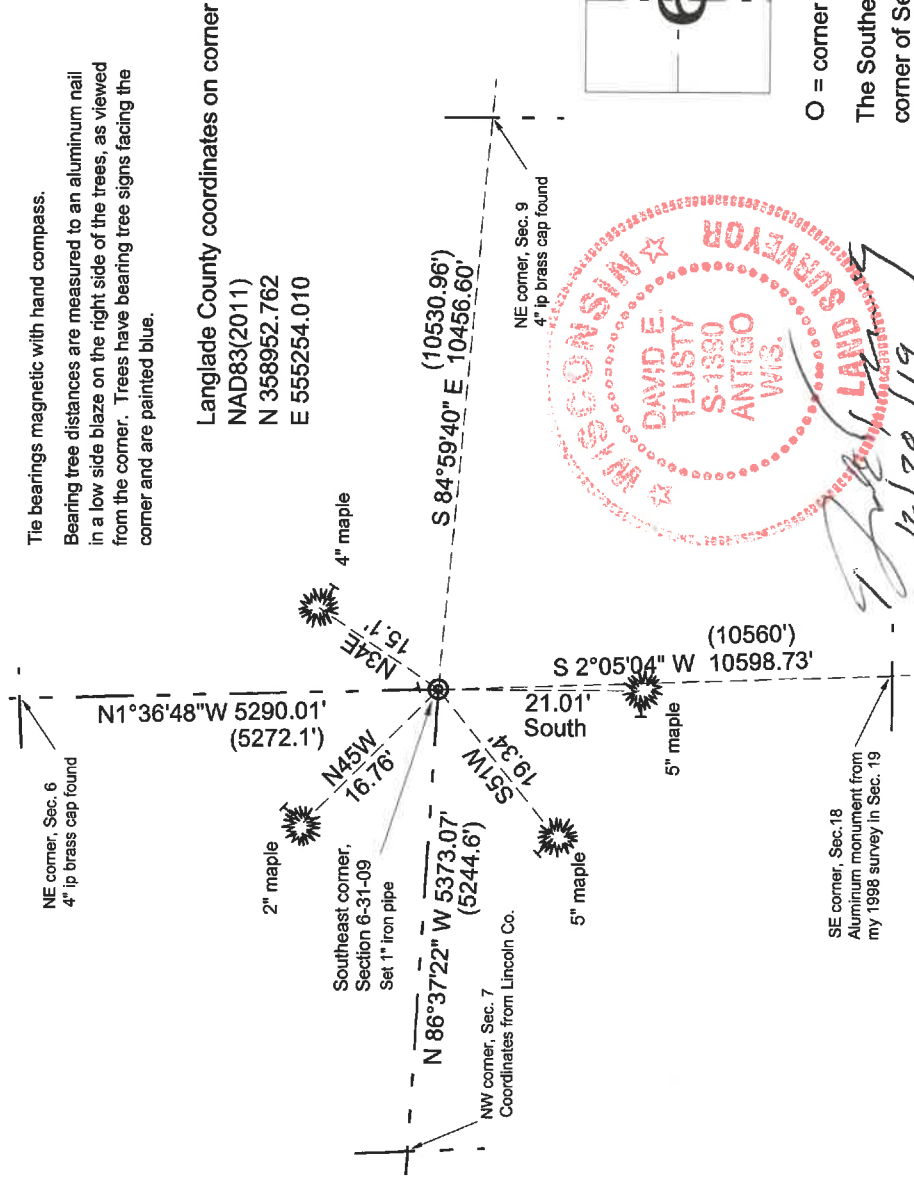
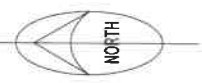
**Physical description of the monument set:**

Set a 1" x 36" iron pipe, about flush, for the corner.

Set a 6' steel channel post with "Langlade County Forest Boundary" sign, 0.4' East of corner monument.

**Describe the accessories used to perpetuate the corner. Include a plan view drawing and accessories found/set. Describe measuring point on bearing trees. Show any topographic features that would aid in future recovery of the corner.**

Field book: FB 20-58



Langlade County coordinates on corner  
 NAD83(2011)  
 N 358952.762  
 E 555254.010



SE corner, Sec. 18  
 Aluminum monument from  
 my 1988 survey in Sec. 19

I, David E. Tlusty, Registered Land Surveyor, as Langlade County Surveyor, certify that the corner location on this record was determined by me and that this U.S. Public Land Survey Monument Record is correct to the best of my knowledge and belief.

O = corner perpetuated  
 The Southeast  
 corner of Section 6,  
 T. 31 N., R. 09 E.,  
 Langlade County, WI

Index No.                   E 5 31-09