

4310919 0060 2014

# LANGLADE COUNTY U.S. PUBLIC LAND SURVEY MONUMENT LOCATION RECORD

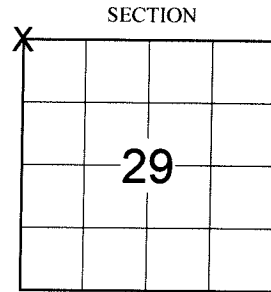
SECTION 29  
TOWNSHIP 31 N  
RANGE 9 E

**R-5**  
NO.

LANDMARK       BENCHMARK  
CORNER IDENTITY: NW CORNER SEC. 29 (BERNTSEN SNM-1 NAIL)      FOUND   
RE-SET   
RE-TIED

ACKLEY  
CITY, VILLAGE, TOWN

LANGLADE COUNTY COORDINATE: N: 343179.2700  
E: 554974.4150



LOCATION  
(Indicated By X)

ELEVATION-(FEET): \_\_\_\_\_ DATUM: \_\_\_\_\_

WEATHER: CLEAR AND SUNNY

DATE OF SURVEY: 8/11/2014 TEMPERATURE: 75 °F

SURVEY PARTY: CHRIS FIERI & IAN FIELD

## BASIS FOR MONUMENT LOCATION:

(DESCRIBE METHOD OF SURVEY AND CORNER AUTHENTICATION)

Original Corner set by Hiram Fellows in 1860.

1919 - Malcolm Hutchinson found an "original bearing tree" per FB122-121 while performing a road survey for the state.

12/1994 - David Tlusty S-1390 re-established this corner by proportioning Hutchinson's East - West distances of 1919 and the centerline of the existing road. Set a R.R. Spike at the corner on 6/14/1995 and set witness monuments to perpetuate it's location.

8/11/2014 - I visited this corner location and recovered the R.R. Spike of record and four witness monuments. Set four (4) Berntsen monuments to perpetuate the corner location. Returned after the re-surfacing of State Highway "64" and set a Berntsen SNM-1 Nail at the corner position.



*Christopher L. Fieri*  
CHRISTOPHER L. FIERI S-2954  
Registered Land Surveyor  
DATE: 10-9-2014

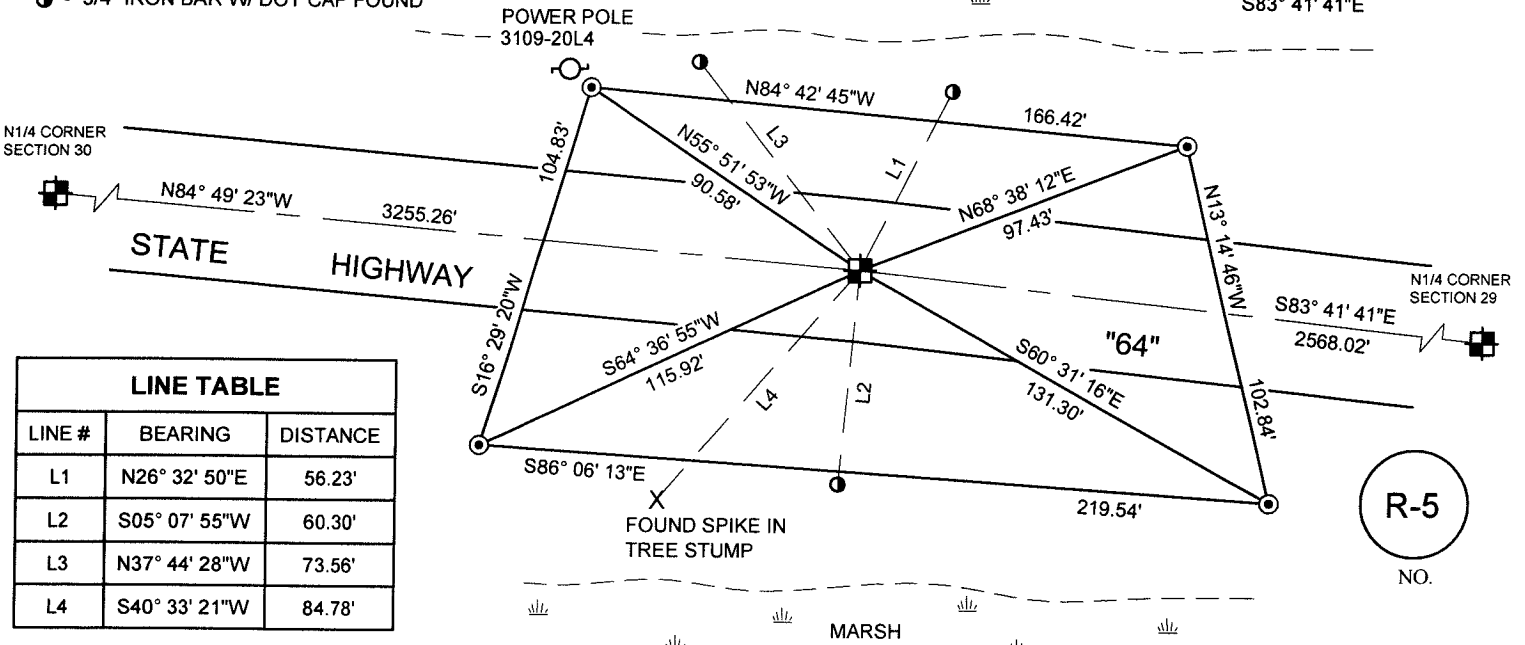
FIELD BOOK NO. S-12 PAGE NO. 61

COMPANY RIVERSIDE LAND SURVEYING LLC

## TIE SKETCH:

- BERNTSEN SNM-1 NAIL SET
- BERNTSEN SDDR130 MONUMENT SET
- 3/4" IRON BAR W/ DOT CAP FOUND

BEARINGS ARE BASED ON THE  
LANGLADE COUNTY COORDINATE  
SYSTEM NAD 83 (2011) AND  
REFERENCED TO THE NORTH LINE  
OF THE NORTHWEST 1/4 OF SECTION  
29 T31N, R9E MEASURED TO BEAR  
S83° 41' 41"E



| LINE TABLE |               |          |
|------------|---------------|----------|
| LINE #     | BEARING       | DISTANCE |
| L1         | N26° 32' 50"E | 56.23'   |
| L2         | S05° 07' 55"W | 60.30'   |
| L3         | N37° 44' 28"W | 73.56'   |
| L4         | S40° 33' 21"W | 84.78'   |

**R-5**  
NO.