

43109190020

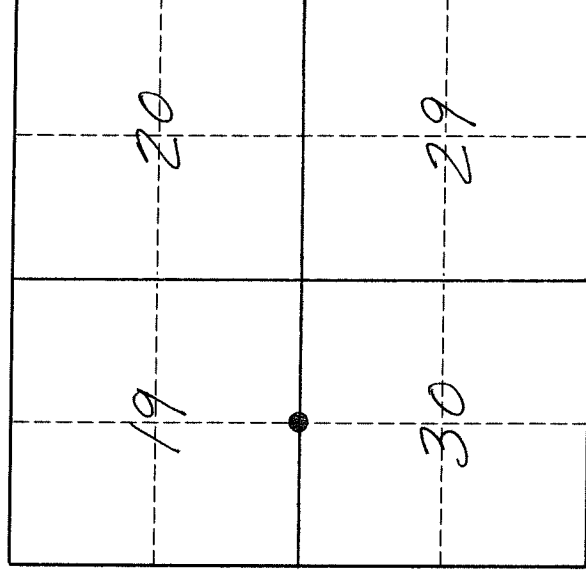
# U. S. PUBLIC LAND SURVEY MONUMENT RECORD

## INSTRUCTIONS:

This record shall show the location of the corner and shall include all of the following nine elements (a through i).

- (a) Identify the corner by reference to the U.S. public land survey system.  
 ● = Corner monument restored.

The South Quarter corner of Section 19, Township 31 North, Range 9 East, Langlade County, Wisconsin.



T. 31 N., R. 9 E.

- (b) Describe any record evidence, monument evidence, occupational evidence, testimonial evidence or any other material evidence you considered, and whether the monument was found or placed.

The original corner was established in 1860 by Hiram C. Fellows. Original bearing trees: Birch, 8", N75°W, 11 lks., and a Birch, 11", S32°E, 8 lks. In February, 1912, Malcolm Hutchinson found the  $\frac{1}{4}$  post and original BT, dead but plainly marked. He marked new BT's: pine stump, 30", N39 $\frac{1}{2}$ °E, 43 lks., and a pine stump, 30", N10 $\frac{1}{2}$ °W, 202 $\frac{1}{2}$  lks. In November, 1921, W.C. Weby used this corner for survey work in the SW quarter of Section 19 and set a pipe in the highway for the corner. On 05/10/94, D. Tlusty, Jack Wallin (DOT) and R.B. Johnson (DOT) found a 2 $\frac{1}{2}$ " x 3" T-shaped iron rod in road, 25" below the surface and in original soil. Also found remains of pine stump that match Hutchinson BT. I accept the found iron as the best evidence of the original corner location and perpetuate said location as shown below.

- (c) In the plan view drawing below, provide reference ties to at least 4 witness monuments, or, if the location is within a municipality, to at least 2 witness monuments. (Witness monuments shall be made of concrete, natural stone, iron or other equally durable material.)

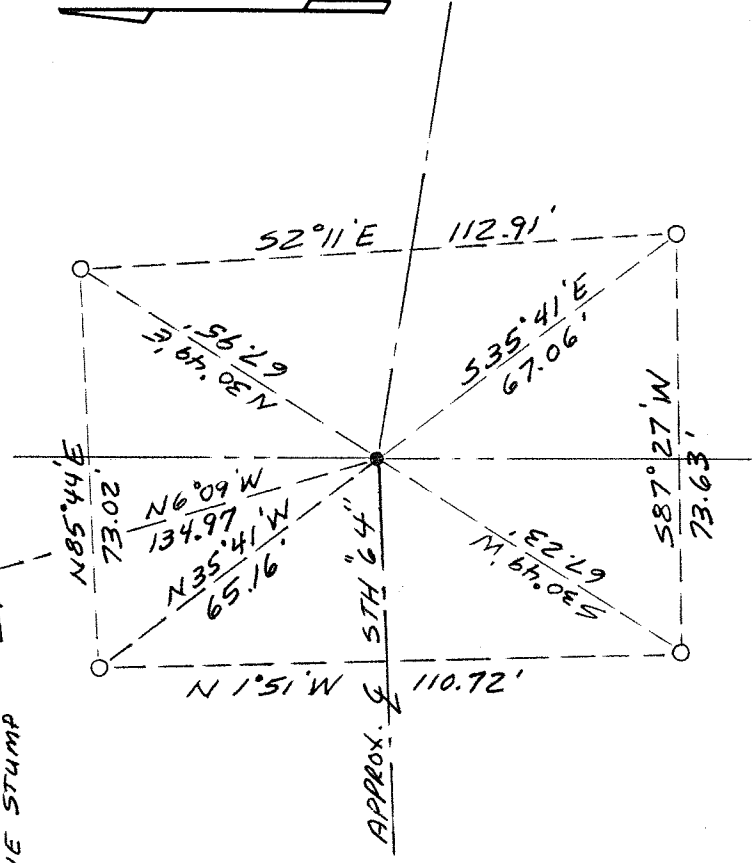
Describe witness monuments.

○ = 2" x 30" aluminum monument (with magnet) and 3" aluminum cap set by DOT

SET  $\frac{3}{4}$ " x 30" RE-BAR IN CENTER OF  
 REMAINS OF PINE STUMP

- (d) Show a plan view drawing depicting the relevant monuments and reference ties which is sufficient in detail to enable accurate relocation of the corner monument if the corner monument is disturbed. Indicate north.

Tie bearings true based on DOT traverse info.  
 Tie distances measured electronically.



43109190000

Describe any material discrepancy between the location of the corner as restored or reestablished and the location of that corner as previously restored or reestablished by distance and direction. Show the discrepancy on the plan view drawing under (d), above. Show the distances between the corner as previously restored or reestablished and (1) the corner as restored or reestablished, and (2) to at least 2 of the witness monuments shown on the drawing in (d), above.

No discrepancy.


(f) Was the corner restored through acceptance of (1) an obliterated evidence location, or, (2) a found perpetuated location.  
A found perpetuated location.

(g & h) Was the corner reestablished through lost corner proportionate methods? If so, show the method, including the directions and distances to other public land survey corners used as evidence or used for proportioning in determining the corner location.

No.

(i) I, David E. Tlusty, Langlade County Surveyor,  
(type or print name)

certify that the corner location shown on this record was determined by me or under my direction and control and that this U.S. Public Land Survey Monument Record is correct and complete to the best of my knowledge and belief.

  
Signature

May 25, 1994  
Date

