

4310920 0000 2014

LANGLADE COUNTY U.S. PUBLIC LAND SURVEY MONUMENT LOCATION RECORD

SECTION 28
TOWNSHIP 31 N
RANGE 9 E

R-9
NO.

LANDMARK BENCHMARK
CORNER IDENTITY: NW CORNER SEC. 28 (BERNTSEN SNM-1 NAIL) FOUND
RE-TIED SET

LANGLADE COUNTY COORDINATE: N: 342939.0430
E: 560134.0190

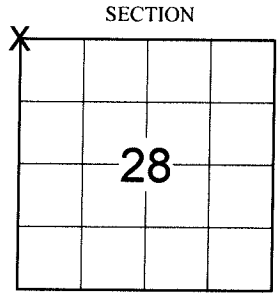
ELEVATION-(FEET): _____ DATUM: _____

WEATHER: CLEAR AND SUNNY

DATE OF SURVEY: 8/11/2014 TEMPERATURE: 75 °F

SURVEY PARTY: CHRIS FIERI & IAN FIELD

ACKLEY
CITY, VILLAGE, TOWN



LOCATION
(Indicated By X)

BASIS FOR MONUMENT LOCATION:

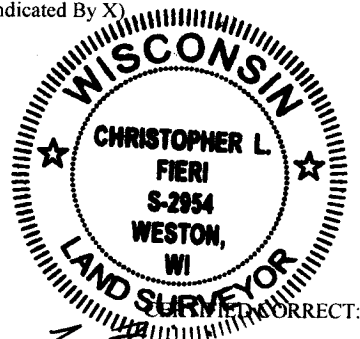
(DESCRIBE METHOD OF SURVEY AND CORNER AUTHENTICATION)

Original Corner set by Hiram Fellows in 1860.

3/29/2014 - William Kelly S-1098 recovered a "Stone Pile Monument in the centerline of Highway "64". Accepted it as the corner location, set a P.K. Nail over the monument, and made witness monuments to perpetuate it's position.

5/10/1994 - Barrientos and Associates visited the corner location and recovered a P.K. Nail. Set four (4) Berntsen 2" x 30" Aluminum Witness Monument with caps.

8/11/2014 - I recovered a Mag Nail at the corner location and all witness monuments from the previous tiesheet. Returned after the re-surfacing of State Highway "64" and set a Berntsen SNM-1 Nail at the corner position.



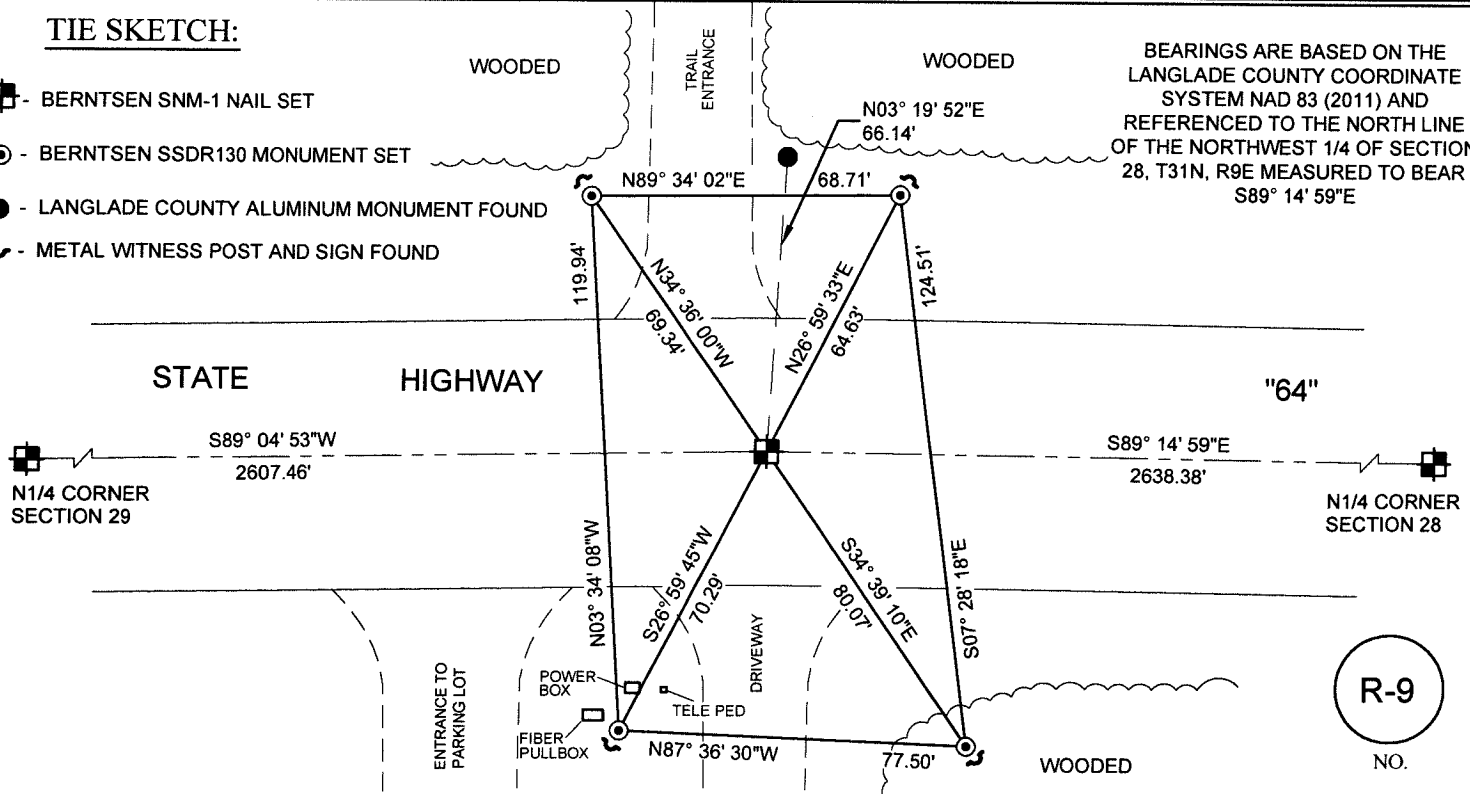
FIELD BOOK NO. S-12 PAGE NO. 60

COMPANY RIVERSIDE LAND SURVEYING LLC

CHRISTOPHER L. FIERI S-2954
Registered Land Surveyor
DATE: 10-9-2014

TIE SKETCH:

- BERNTSEN SNM-1 NAIL SET
- BERNTSEN SDR130 MONUMENT SET
- LANGLADE COUNTY ALUMINUM MONUMENT FOUND
- METAL WITNESS POST AND SIGN FOUND



BEARINGS ARE BASED ON THE
LANGLADE COUNTY COORDINATE
SYSTEM NAD 83 (2011) AND
REFERENCED TO THE NORTH LINE
OF THE NORTHWEST 1/4 OF SECTION
28, T31N, R9E MEASURED TO BEAR
S89° 14' 59"E

R-9
NO.