

CERTIFIED LAND CORNER RESTORATION

Index No. R-15
31-9

State of Wisconsin }
County of Langlade } ss.

I Raymond J. Hallisy, do hereby
certify that on the 5th day
of November, 1977, I found
evidence of the 1/4
corner of 22 & 27
Township 31, North, Range
9E, Fourth Principal Meridian,
as described hereon; and that from this evidence
I established a new monument and accessories
as described hereon to perpetuate the original
location of this corner.

Resident witnesses:

.....
.....
.....

History of original corner establishment:

Corner set in the 1930 resurvey.

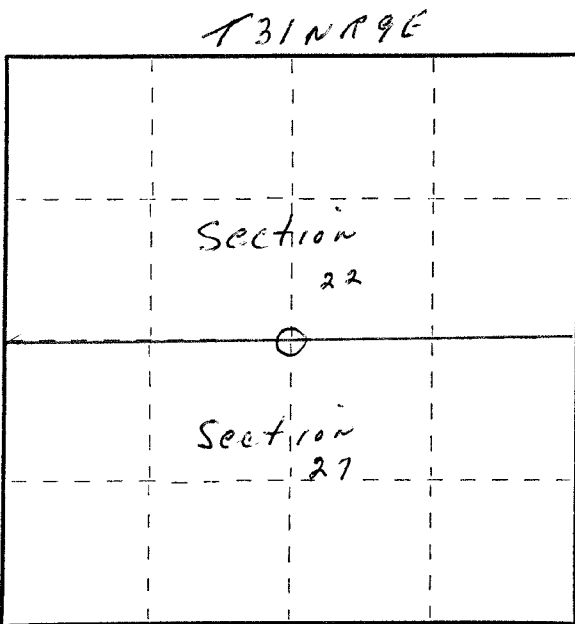
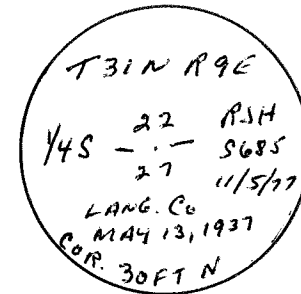
Description of corner evidence found:

1/2" iron pipe with brass cap south of State Highway "61"

Description of monument and accessories I established to perpetuate the original location of this corner.

BT's to witness Corner.

8" Red Maple S56W 69.4 Ft.
1 1/4" Spruce S59E 27.5 Ft.



○ = Corner monument restored.

Dated at Antigo, Wis., this 5th day of November, 1977.

Signature Raymond J. Hallisy Title Land Surveyor Registration No. S685
(County Surveyor, Registered Land Surveyor, or other duly authorized official)

Office of Register of Deeds, County of, I hereby certify that the within
instrument was filed in this office for record on the day of, 19.....
at o'clock M.

.....
(Register of Deeds)

By.....Deputy

FORM 965 H. C. MILLER CO., MILWAUKEE

4310920020