

# LANGLADE COUNTY U.S. PUBLIC LAND SURVEY MONUMENT LOCATION RECORD

4310922 0020 2014

SECTION 27  
TOWNSHIP 31 N  
RANGE 9 E

R-15  
NO.

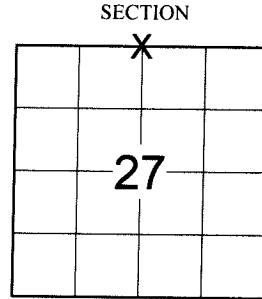
LANDMARK  BENCHMARK

FOUND   
SET   
RESET   
RE-TIED

CORNER IDENTITY: N1/4 CORNER SEC. 27 (BERNTSEN SNM-1 NAIL)

ACKLEY  
CITY, VILLAGE, TOWN

LANGLADE COUNTY COORDINATE: N: 342847.281  
E: 568119.963



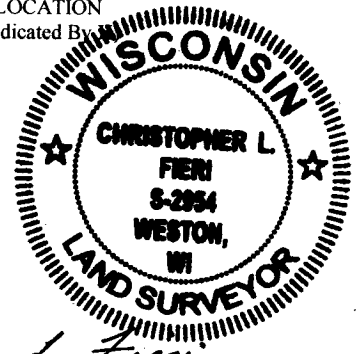
ELEVATION-(FEET): \_\_\_\_\_ DATUM: \_\_\_\_\_

WEATHER: OVERCAST

DATE OF SURVEY: 8/11/2014 TEMPERATURE: 70 °F

SURVEY PARTY: CHRIS FIERI & IAN FIELD

LOCATION  
(Indicated By)



CERTIFIED CORRECT:

*Christopher L. Fieri*  
CHRISTOPHER L. FIERI S-2954  
Registered Land Surveyor  
DATE: 10-9-2014

## BASIS FOR MONUMENT LOCATION:

(DESCRIBE METHOD OF SURVEY AND CORNER AUTHENTICATION)

1860 - Original corner established by Hiram Fellows.

1930 - Corner was set during resurvey

11/5/1977 - Raymond J. Hallisey S-685 recovered the 4" Iron Pipe with brass cap South of State Highway "64" that was set during the 1930 resurvey. Set out witness bearing trees to perpetuate the corner.

5/10/1994 - Barrientos and Associates recovered a P.K. Nail at the corner location. Set four (4) Berntsen 3" x 30" aluminum monuments to perpetuate the corner location.

8/11/2014 - I visited this corner prior to highway construction and found a MAG Nail at the corner location. I also recovered all four (4) of the witness monuments from the previous tiesheet which checked well with the found corner monument. I returned after the re-surfacing of State Highway "64" and set a Berntsen SNM-1 Nail at the corner position.

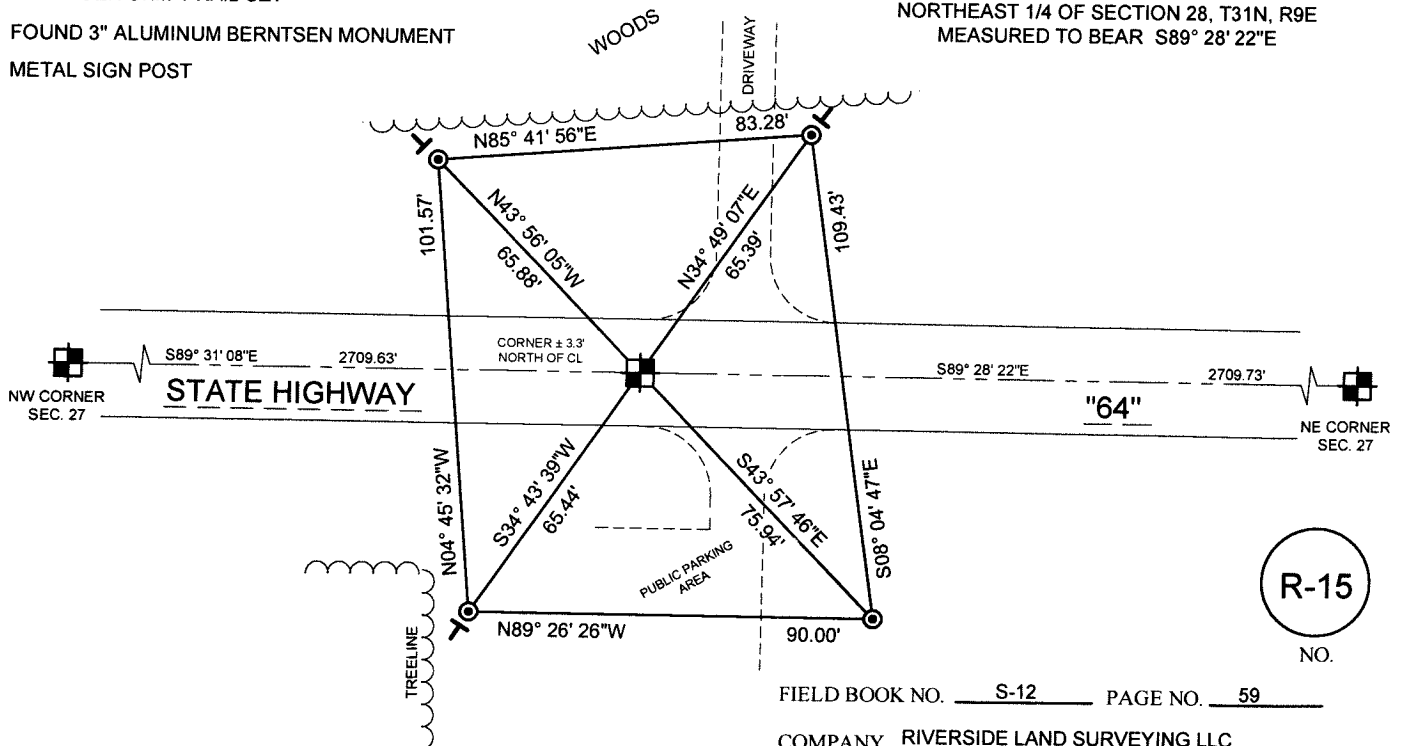
## TIE SKETCH:

- BERNTSEN SNM-1 NAIL SET

⊙ - FOUND 3" ALUMINUM BERNTSEN MONUMENT

T - METAL SIGN POST

BEARINGS ARE BASED ON THE LANGLADE COUNTY COORDINATE SYSTEM NAD 83 (2011) AND REFERENCED TO THE NORTH LINE OF THE NORTHEAST 1/4 OF SECTION 28, T31N, R9E MEASURED TO BEAR S89° 28' 22"E



R-15  
NO.

FIELD BOOK NO. S-12 PAGE NO. 59

COMPANY RIVERSIDE LAND SURVEYING LLC