

LANGLADE COUNTY
U.S. PUBLIC LAND CORNER RESTORATION

The East Quarter corner of Section 24, T. 31 N., R. 09 E., Langlade County, WI.

Corner was: (check all that apply) 43109242000

- Restored through acceptance of an obliterated evidence location.
- Restored through acceptance of a found perpetuated location.
- Determined to be lost and re-established through proportionate methods.
- Show bearings and distances to PLSS corners used for proportioning, and show original distances).
- Restored/recovered/re-established in a location that differs from a previously established position.
- (Show difference in plan view below).
- Check here if addition information is shown on the reverse side of this form.

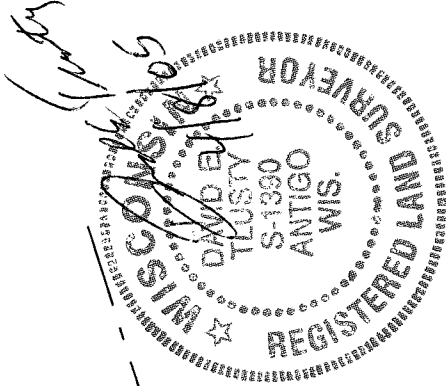
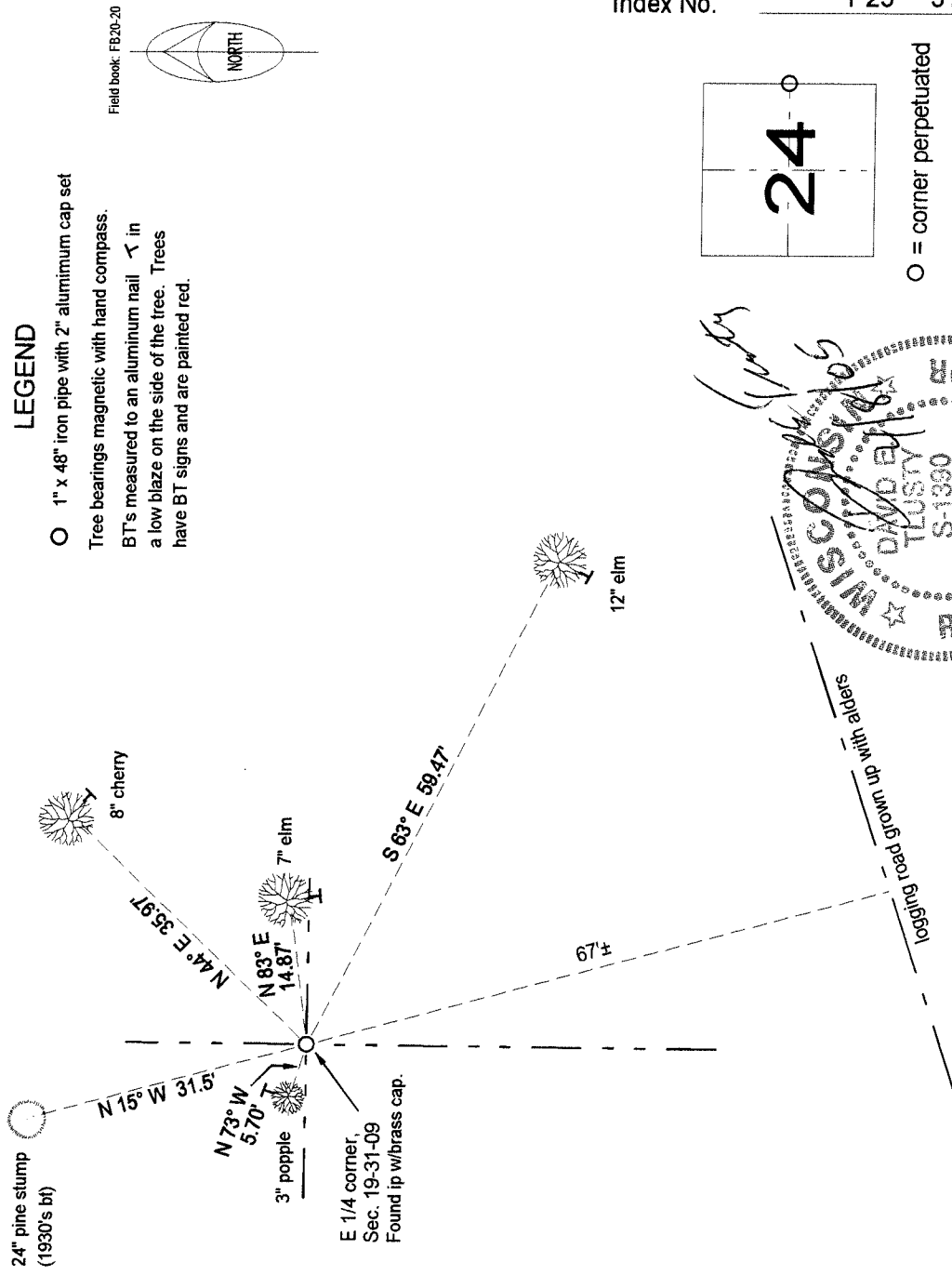
Describe record evidence, recovered physical evidence, occupational evidence, testimonial evidence and all other evidence considered in the recovery/restoration of the corner.

The original corner was established in 1859 by Hiram C. Fellows. Original bearing trees: ash, 7", S50°E, 4 links and a birch, 8", N87°E, 7 links. In the 1930's re-survey of the East half of 31-09, Darwin Hintz established this corner by single proportionate measurement between adjoining section corners. He set a 4" iron pipe with brass cap and noted a white pine stump, 24", N17°W, 48 links. 03/23/05 D. Tlusty found 4" iron pipe with brass cap frost heaved and lying on ground. Re-set monument. Found 24" pine stump, N 15° W, 32.0'.

Physical description of the monument set:

The existing 4" ip is bent because it is almost completely rusted through. I pulled the 4" monument and replaced it with a 1" x 48" iron pipe with 2" aluminum cap, up 0.5' above ground.

Describe the accessories used to perpetuate the corner. Include a plan view drawing and accessories found/set. Describe measuring point on bearing trees. Show any topographic features that would aid in future recovery of the corner.



I, David E. Tlusty, Registered Land Surveyor, as Langlade County Surveyor, certify that the corner location on this record was determined by me and that this U.S. Public Land Survey Monument Record is correct to the best of my knowledge and belief.