

CERTIFIED LAND CORNER RESTORATION

Index No. V-25

State of Wisconsin }
County of Lan glade } ss.

History of original corner establishment:

I Raymond J. Hallisy, do hereby certify that on the 13th day of December, 1980, I found evidence of the Section corner of 25, 36, 30, & 31 Township 31, North, Range 9 & 10E, Fourth Principal Meridian, as described hereon; and that from this evidence I established a new monument and accessories as described hereon to perpetuate the original location of this corner.

Corner reset in the 1930 resurvey.

Description of corner evidence found:

4" pipe with brass cap, Location poster about 7 chains West on old trail on a steel fence post.

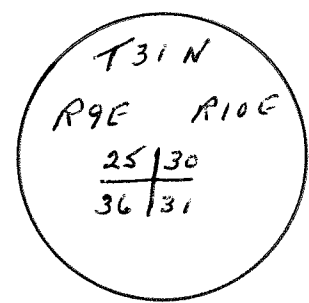
Resident witnesses:

*11/11/05 D. FLUSTY
FOUND MON. GOOD COND. IN
POPPLE SPROUTS.
SEE MY MY IN ADJOINING
SEC 30 FOR COORDINATES.*

Description of monument and accessories I established to perpetuate the original location of this corner.

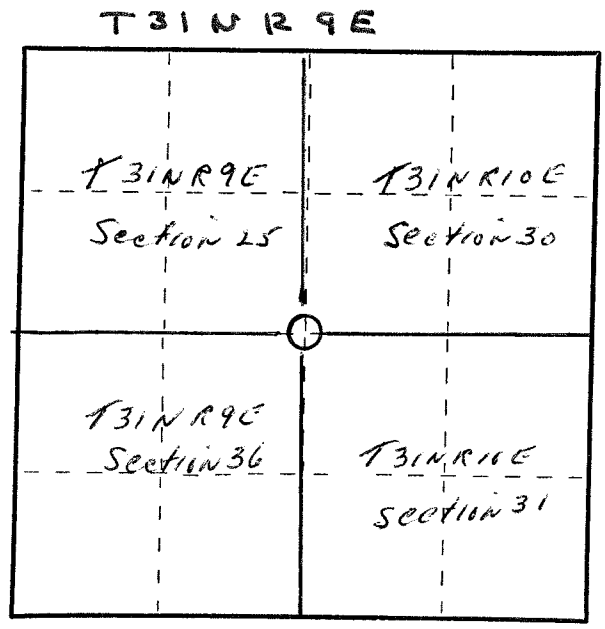
New BT's

- 6" White Birch S86W 31'9"
- 6" Red Maple N70W 21'3"
- 6" Red Maple S70W 24'7"



FORM 955 H. C. MILLER CO., MILWAUKEE

43109250000



○ = Corner monument restored.

Dated at Antigo, Wis., this 13th day of December, 1980.

Signature Raymond J. Hallisy Title Reg. Surveyor Registration No. S-685
(County Surveyor, Registered Land Surveyor, or other duly authorized official)

Office of Register of Deeds, County of _____, I hereby certify that the within instrument was filed in this office for record on the _____ day of _____, 19____ at _____ o'clock _____ M.

(Register of Deeds)

By _____ Deputy