

# LANGLADE COUNTY U.S. PUBLIC LAND CORNER RESTORATION

**The East Quarter corner of Section 25, T. 31 N., R. 09 E., Langlade County, WI.**

**Corner was: (check all that apply)**

- Restored through acceptance of an obliterated evidence location.
- Restored through acceptance of a found perpetuated location.
- Determined to be lost and re-established through proportionate methods.
- Show bearings and distances to PLSS corners used for proportioning, and show original distances).
- Restored/recovered/re-established in a location that differs from a previously established position.
- (Show difference in plan view below).
- Check here if additional information is shown on the reverse side of this form.

43109252000

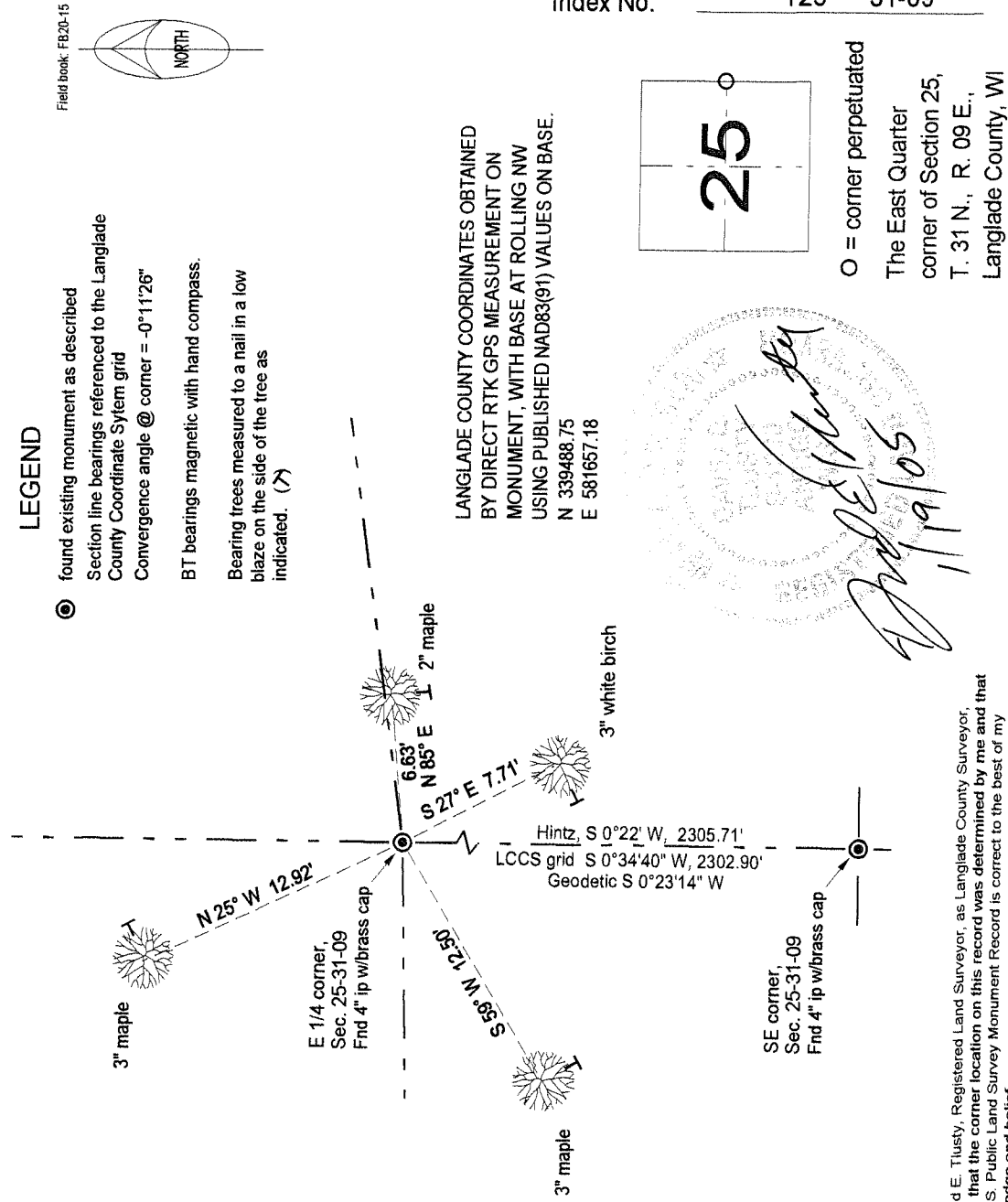
**Describe record evidence, recovered physical evidence, occupational evidence, testimonial evidence and all other evidence considered in the recovery/restoration of the corner.**

The original corner was established in 1859 by Hiram C. Fellows. Original bearing trees: birch, 10", S72°E, 12 links and a hemlock, 7", S20°W, 11 links. In 1936-1937, Darwin Hintz resurveyed the East Half of 31-09 and set this corner by single proportionate measurement between the SE corner of Section 36 and the NE corner of Section 25. He set 4" OD pipe with brass caps. For this corner, there were no bearing trees marked. 01/11/05 D. Tlusty, K. Symes, J. Auer, found a 4" brass capped monument frost heaved and leaning heavily SE. The distance and bearing to corner to the south compare well with Hintz. Accepted monument found as the best evidence of the corner position. Re-dug monument so top is now 0.8' above very wet ground.

**Physical description of the monument set:**

- I re-set the existing monument and set a white vinyl sign post, 0.4' north of the corner.

**Describe the accessories used to perpetuate the corner. Include a plan view drawing and accessories found/set. Describe measuring point on bearing trees. Show any topographic features that would aid in future recovery of the corner.**



I, David E. Tlusty, Registered Land Surveyor, as Langlade County Surveyor, certify that the corner location on this record was determined by me and that this U.S. Public Land Survey Monument Record is correct to the best of my knowledge and belief.