





# LANGLADE COUNTY U.S. PUBLIC LAND CORNER RESTORATION

The Southeast corner of Section 30, T. 31 N., R. 09 E., Langlade County, WI.

Corner was: (check all that apply)

4310930 0000

- Restored through acceptance of an obliterated evidence location.
- Restored through acceptance of a found perpetuated location.
- Determined to be lost and re-established through proportionate methods.
- Show bearings and distances to PLSS corners used for proportioning, and show original distances).
- Restored/recovered/re-established in a location that differs from a previously established position.
- (Show difference in plan view below).
- Check here if additional information is shown on the reverse side of this form.

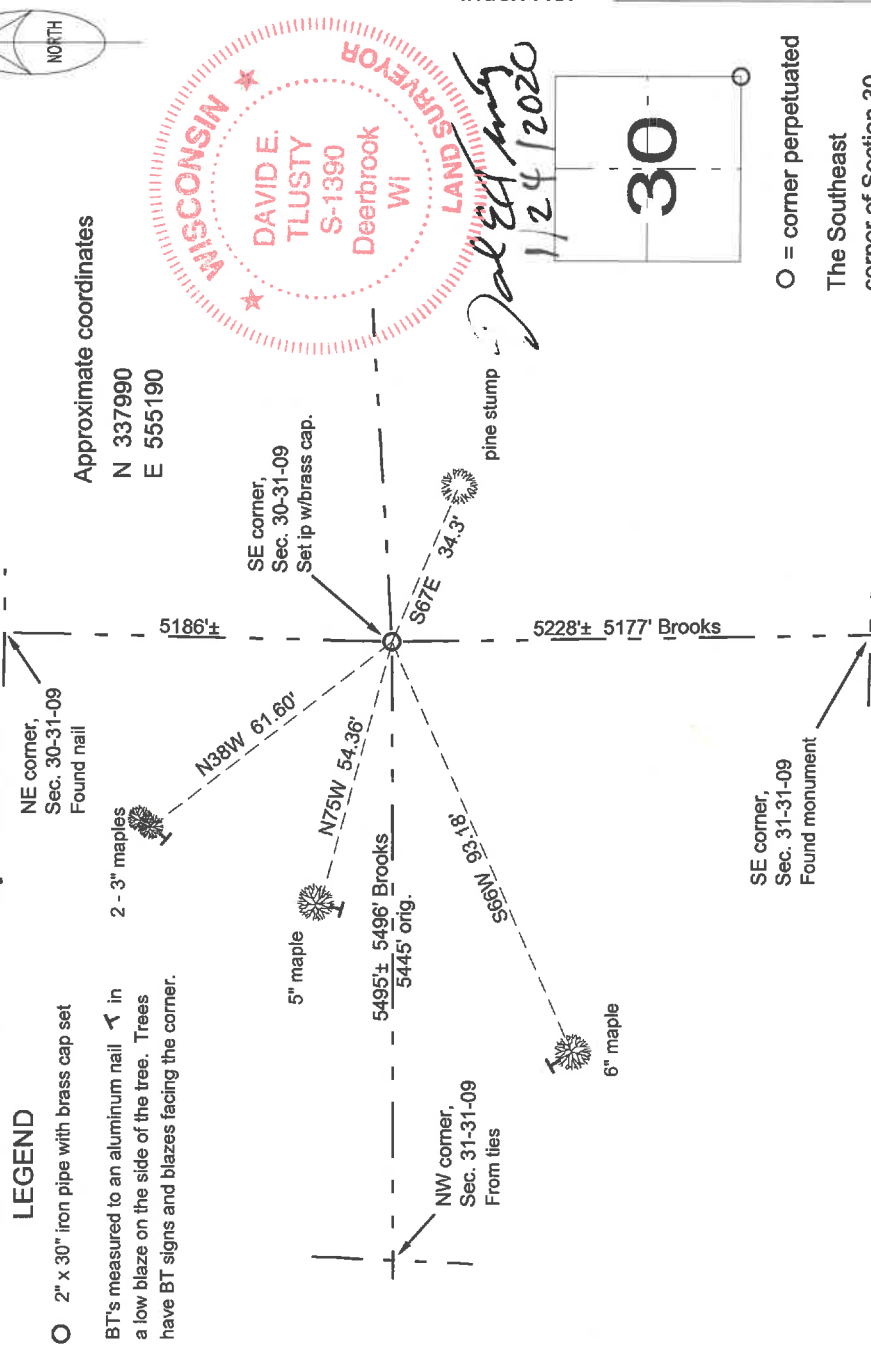
**Describe record evidence, recovered physical evidence, occupational evidence, testimonial evidence and all other evidence considered in the recovery/restoration of the corner.**

The original corner was established in 1859 by Hiram Fellows. Original bearing trees: hemlock, 8", S45E, 12 links and a hemlock, 8", N32W, 8 links. In June, 1906, Ed Brooks chained north from the SE corner of Section 31. At 78.28 chains, he said "intersect Sec line 6.73 chs East of corner. Orig. BT all rotted away but the roots. New BT Hemlock, 10, N1E, 43-1/2 links and Pine, 18", S72E, 54 links. In April, 2001, D. Tlusty and Dale Carlson measured to corners north, south and west of here. A search of the area uncovered one pine stump which we accepted as the pine mentioned by Brooks, and reset the corner based on a corrected bearing and Brooks' distance from the pine stump. Set the monument described below, see also rough measurements to adjoining corners.

**Physical description of the monument set:**

- I set a 2" x 30" galvanized, flared bottom iron pipe with a 3 1/4" brass cap for the corner.
- I set a white vinyl sign post 0.6' north of the corner monument.

**Describe the accessories used to perpetuate the corner. Include a plan view drawing and accessories found/set. Describe measuring point on bearing trees. Show any topographic features that would aid in future recovery of the corner.**



I, David E. Tlusty, Registered Land Surveyor, as Langlade County Surveyor, certify that the corner location on this record was determined by me and that this U.S. Public Land Survey Monument Record is correct to the best of my knowledge and belief.

○ = corner perpetuated  
The Southeast corner of Section 30, T. 31 N., R. 09 E., Langlade County, WI