

**LANGLADE COUNTY U.S. PUBLIC LAND  
SURVEY MONUMENT LOCATION RECORD**

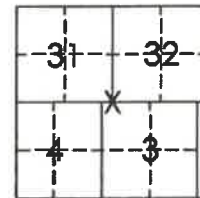
Corner Location: Southeast Corner of Section 31  
 Monument Type: Found 4" Iron Pipe  
 County Coordinate: N 260,335.22 E 339,303.78  
 Date of Survey: 5/28/2019 Datum: WSCRS Marathon NAD 83 (2011)  
 Survey Party: John Jursa  
 Field Book: Looseleaf Hewitt Page Number: Z5

Found   
 Set   
 Re-set   
 Re-Tied

Section 31  
 Township 31N  
 Range 9E

75

Ackley  
~~City, Village, Town~~  
43109310000  
 Section



Location (indicated by X)



**BASIS FOR MONUMENT LOCATION:**

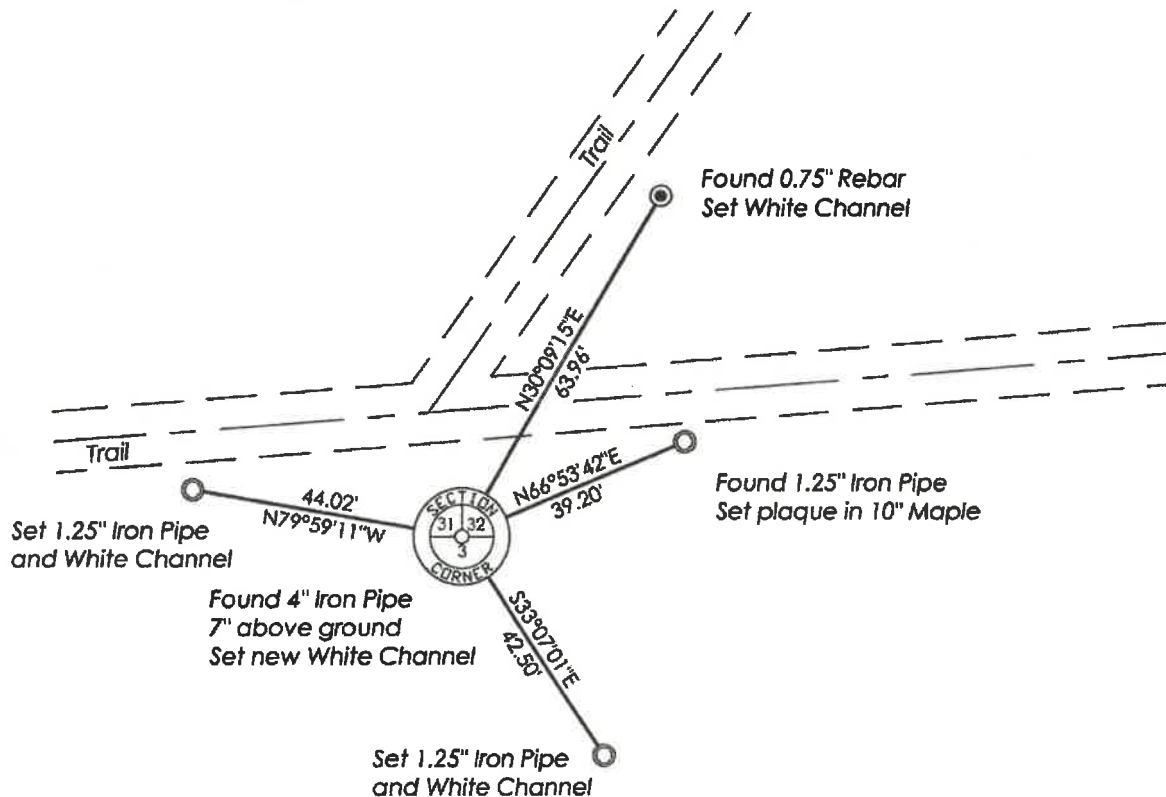
(Describe method of survey and corner authentication)

- 1851 - James Marsh set original corner and bearing trees.
- 1937 D.A. Hintze "found corner good" and set a 4" Iron Pipe with brass cap, heaved from frost. Reset monument in old hole at base of pipe.
- 11/24/2004 - D. Tlusty found and accepted 4" Iron Pipe with top 7" above ground. Set vinyl post and four ties to witness corner.
- 5/28/2019 - Visited corner location and found 4" Iron Pipe in good condition. Also found two remaining ties. Set two new ties as measured and shown below.



Emily K. Pierce, RLS-2728  
 Date: 5/30/2019

**TIE SKETCH:** Show minimum of four (4) horizontal tie distances to fixed witness monuments. Describe all monuments found or set.



75