

# MARATHON COUNTY U.S. PUBLIC LAND SURVEY MONUMENT LOCATION RECORD

Corner Location: South 1/4 Corner of Section 33

Monument Type: Set 1.0" Aluminum Rod with 3.25" Aluminum Cap

County Coordinate: N 260,353.43 , E 347,242.18

Date of Survey: 10/2/2019 Datum: WSCRS Marathon NAD 83 (2011)

Survey Party: John M. Jursa

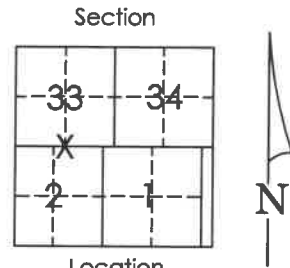
Field Book: Looseleaf Hewitt Page Number: Z11

Found   
Set   
Re-set   
Re-Tied

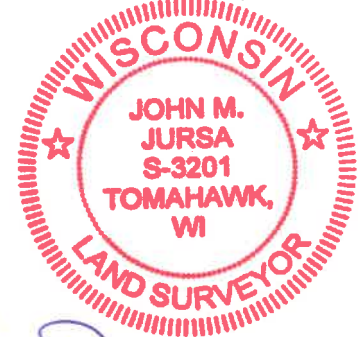
Section 33  
Township 31N  
Range 9E

Z11

Ackley  
City, Village, Town 4310933 0020



Location (indicated by X)



*[Signature]*  
John M. Jursa, RLS-3201  
Date: 10/31/2019

## BASIS FOR MONUMENT LOCATION:

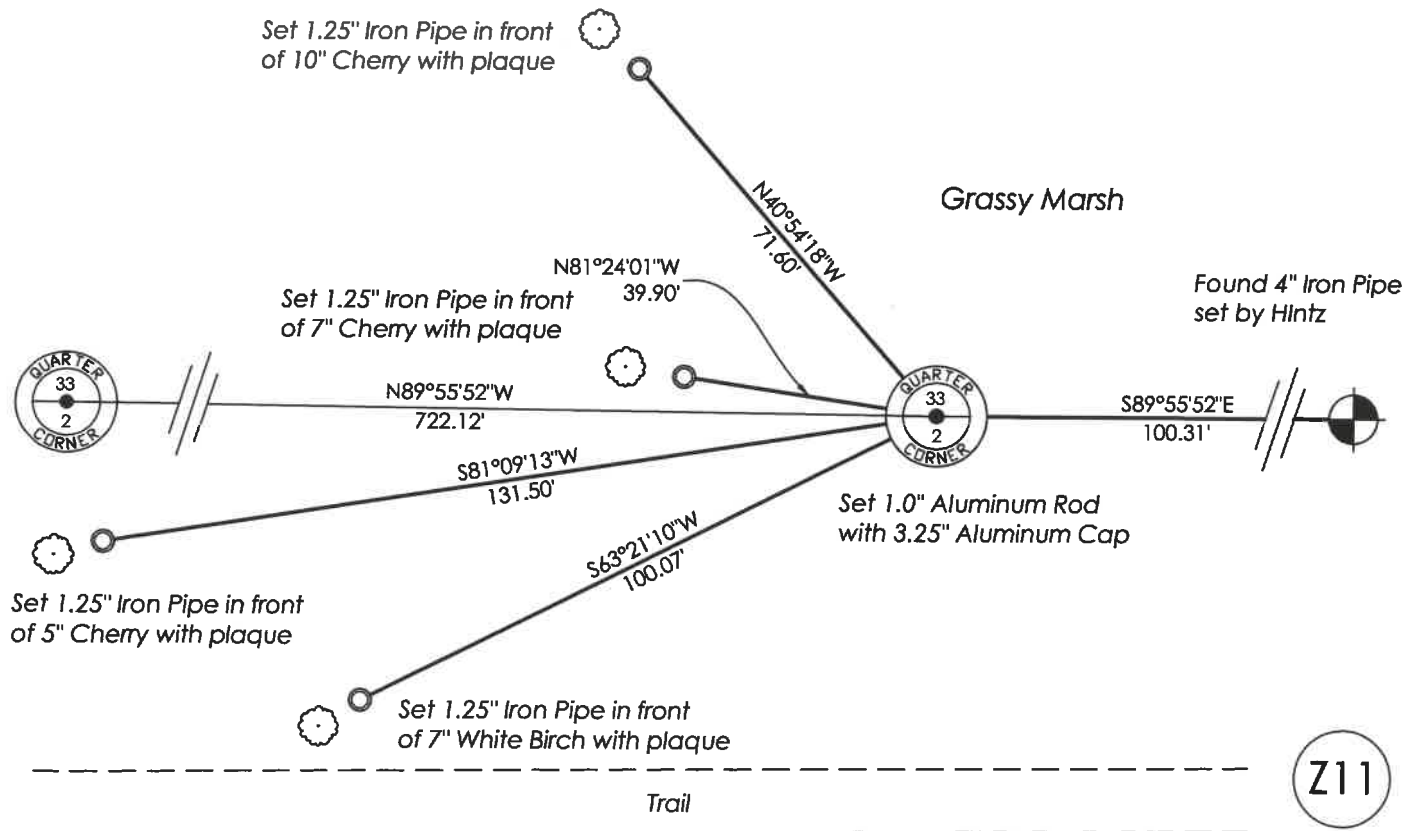
(Describe method of survey and corner authentication)

6-1937 - D.A. Hintz set a 3" Iron Pipe with Brass Cap.

2/15/1978 - Anthony Kiedrowski found and did not accept the 3" Iron Pipe set by Hintz, determining that it had been set incorrectly after a single proportion based upon the original notes calculated it to be 100.3' west of the found pipe. He set a 2" X 44" Iron Pipe at the calculated position and tied out.

10/2/2019 - I did not find the 2" Iron Pipe set by Kiedrowski, although the 4" Iron Pipe set by Hintz remained. No ties remained. I used Kiedrowski's measurements shown on his tie sheet from the 4" Iron Pipe set by Hintz to the east and the North 1/4 of Section 2, T30N R9E, to the west and set a 1" Aluminum Rod with a 3.25" Aluminum Cap at a single proportion between the two found monuments. Set four new ties to the corner and measured as shown below.

**TIE SKETCH:** Show minimum of four (4) horizontal tie distances to fixed witness monuments found or set. Describe all monuments found or set.



Z11