

# LANGLADE COUNTY U.S. PUBLIC LAND CORNER RESTORATION

The Southeast corner of Section 34, T. 31 N., R. 09 E., Langlade County, WI.

**Corner was: (check all that apply)**

- Restored through acceptance of an obliterated evidence location.
- Restored through acceptance of a found perpetuated location.
- Determined to be lost and re-established through proportionate methods.
- Show bearings and distances to PLSS corners used for proportioning, and show original distances).
- Restored/recovered/re-established in a location that differs from a previously established position.
- (Show difference in plan view below).
- Check here if additional information is shown on the reverse side of this form.

4310934 0000

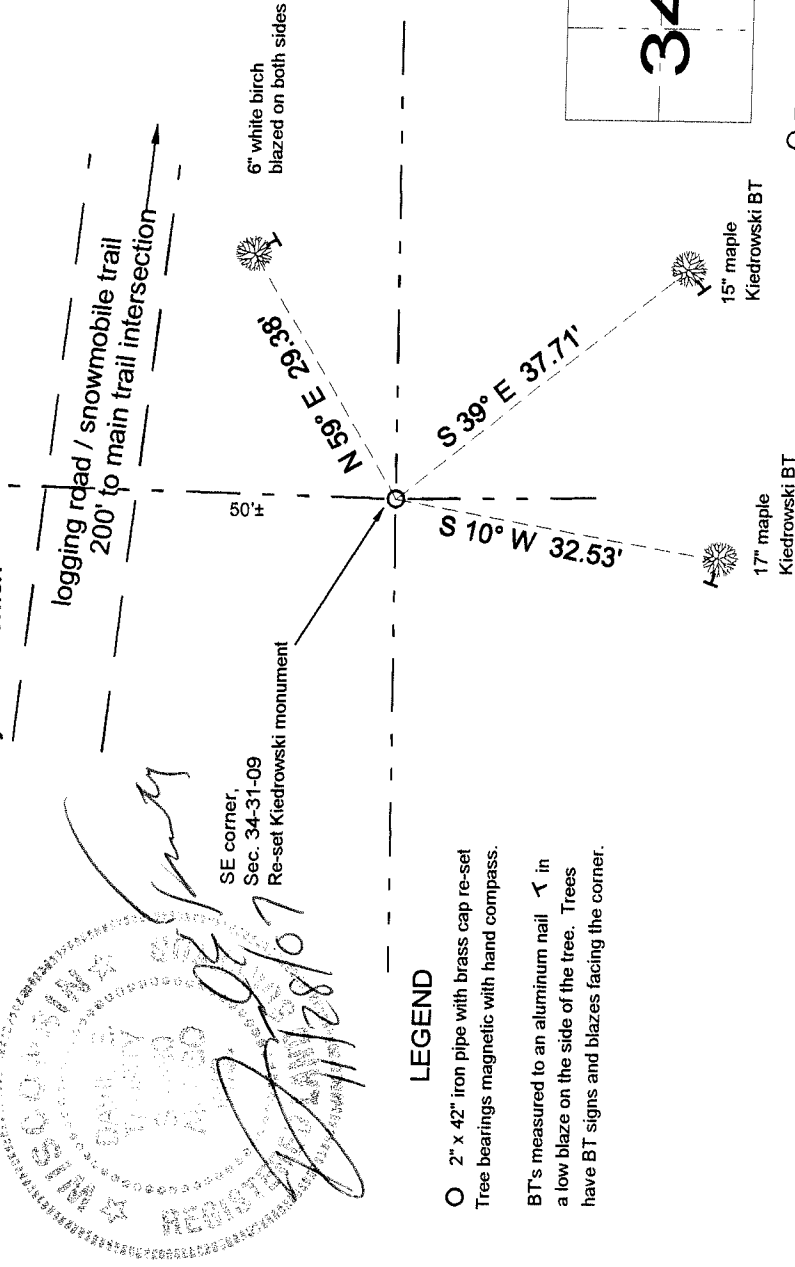
**Describe record evidence, recovered physical evidence, occupational evidence, testimonial evidence and all other evidence considered in the recovery/restoration of the corner.**

The original corner was established in 1851 by James M. Marsh. Original bearing trees: birch, 14", N80°E, 26 links; birch, 8", N72°E, 42 links; birch, 10", N03°W, 26 links and an elm, 9", N23°W, 11 links. In the 1930's resurvey of the East half of 31-09, Hintz set a monument at an old scribed stake that he found within a few feet of a proportioned position. He said "ground was so badly burned we could not identify the stps." In 1978, Tony Kiedrowski couldn't find the 1930's monument so he re-established the corner by proportionate methods, set a 2" iron pipe with brass cap and marked bearing trees. In 2002, D. Tlusty, D. Williams found the Kiedrowski monument frost heaved and lying on the ground. Re-established the corner position from 3 remaining Kiedrowski bearing trees and set a nail as a temporary marker. 1/28/07, D. Tlusty, in place of the nail previously set from the tree ties, I re-set the 2" x 42" iron pipe found lying on the ground. Top of monument is now 0.8' above ground. Measured to BT's as shown below.

**Physical description of the monument set:**

I reset the 1978 Kiedrowski monument, top is now 0.8' above ground.  
I set a white vinyl sign post 0.4' west of the corner monument and a 6" green steel channel post with a "Langlade County Forest Boundary" sign, 0.7' east of the corner monument.

**Describe the accessories used to perpetuate the corner. Include a plan view drawing and accessories found/set. Describe measuring point on bearing trees. Show any topographic features that would aid in future recovery of the corner.**



**LEGEND**

○ 2" x 42" iron pipe with brass cap re-set  
Tree bearings magnetic with hand compass.

BT's measured to an aluminum nail  
a low blaze on the side of the tree. Trees have BT signs and blazes facing the corner.

I, David E. Tlusty, Registered Land Surveyor, as Langlade County Surveyor, certify that the corner location on this record was determined by me and that this U.S. Public Land Survey Monument Record is correct to the best of my knowledge and belief.

Index No.           Z 17 31-09