

4311001 0020 2023

U.S. PUBLIC LAND SURVEY MONUMENT RECORD - LANGLADE COUNTY

Note: This form is intended and designed to fulfill all requirements of Wisconsin Administrative Code, Chapter A-E 7.08 U.S. Public Land Survey Monument Record (3)(a)(b)(c)(d)(e)(f)(g)(h)(i). An additional sheet may be added to if necessary to conform with said requirements.

(a) Corner Location:

Langlade County Coordinates NAD83(2011):
Northing: 358745.18
Easting: 610548.55

Wisconsin Corner ID: 43110010020

Type of Monument: Railroad Spike

Location: South Quarter Corner

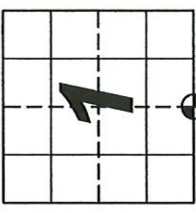
Section 1, Township 31 North, Range 10 East,

Town of Ackley, Langlade County, Wisconsin

RTK GPS direct observation

Calibrated to HMP DP2804 (Ackley C GPS)

3 position average on 9/16/2023



T31N-R10E

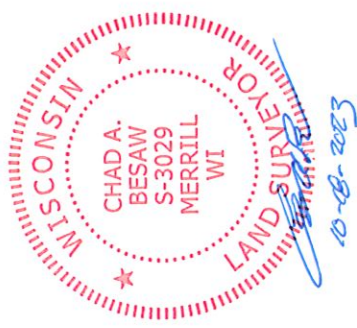
I, Chad A. Besaw, Wisconsin Professional Land Surveyor #S3029, hereby certify that the corner location on this record was determined by me and that this U.S. Public Land Survey Monument Record is correct and complete to the best of my knowledge and belief.

Chad A. Besaw

Chad A. Besaw

10/18/2023

Date



(b)(f)(g)(h) Description of monument found at this corner and if it was accepted, state all evidence (material, testimonial, occupational, plats, records, other monuments) used as a basis for accepting. If not accepted or if nothing was found, state evidence used as basis for establishing location. If reestablishment through lost corner, proportionate methods, indicate all monuments, distances and directions used to establish. Indicate type of monument found or set and sign post.

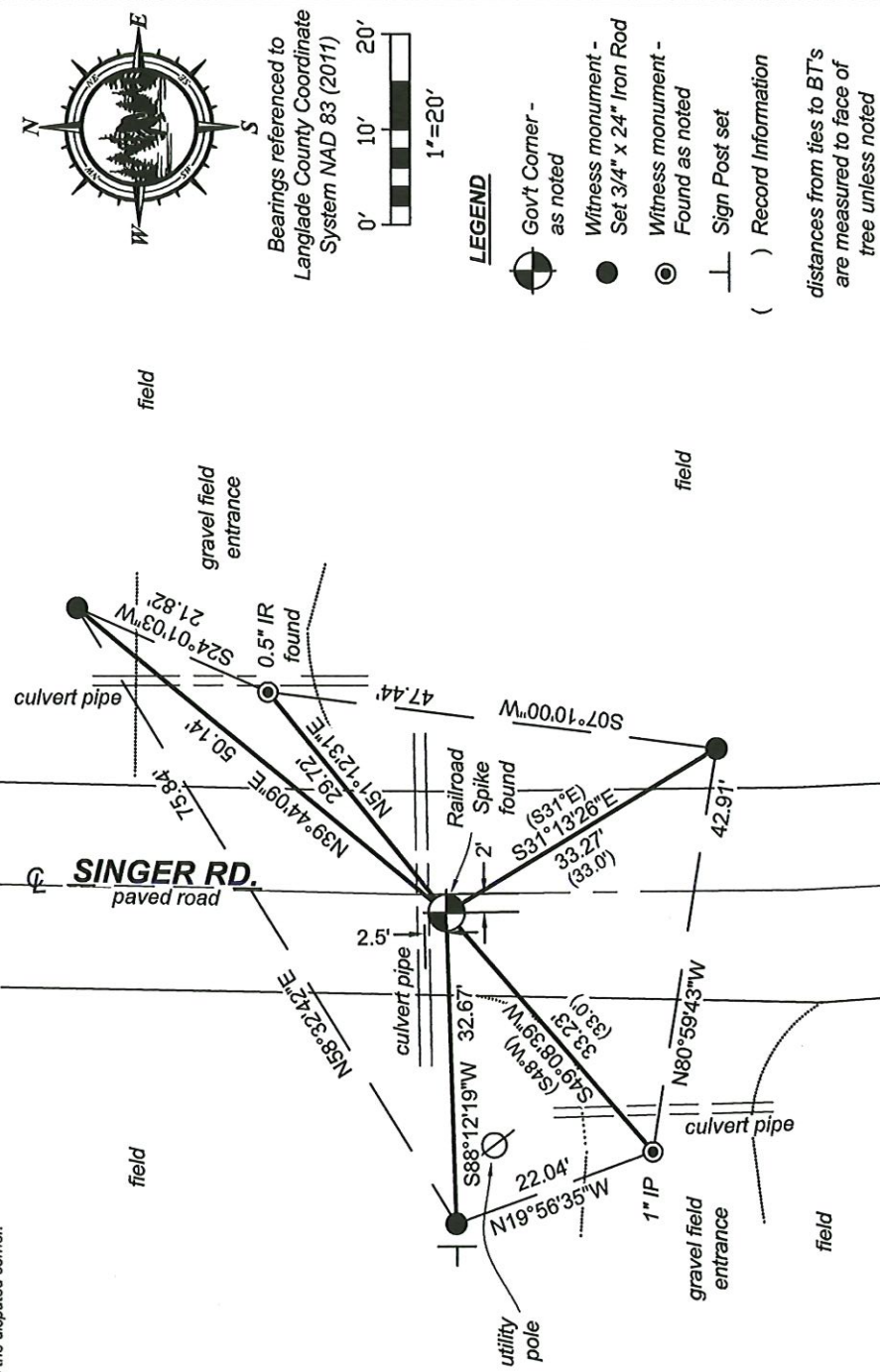
Original Survey - 1860 Aug. - H. C. Fellows set quarter section post. Birch 20 N10W 11 lks, Elm 15 S14E 25 lks.

1986 Dec. - William Kelly found nail at corner position in CSM V3 P291.

1988 Nov. - William Kelly identified corner by resident witness M. Kennedy. Witnessed with 3" aluminum stamped capped monument W 33.0', 1" IP N35°E 33.0', 1" IP S31°E 33.0', 1" IP S48°W 33.0'.

2023 Sep. - Chad A. Besaw found a railroad spike 3" down below road surface at corner location and 2 southerly ties from previous tie sheet. Rewitnessed as shown below.

(c)(d)(e) Plan view of corner with ties to at least 4 witness monuments. If in disagreement with previously established corner, show the distances between the two corners and also indicate the ties to the disputed corner.



Bearings referenced to
Langlade County Coordinate
System NAD 83 (2011)
0' 10' 20'
1"=20'

LEGEND

- Gov't Corner - as noted
- Witness monument - Set 3/4" x 24" Iron Rod
- Witness monument - Found as noted
- Sign Post set
- () Record Information

distances from ties to BT's are measured to face of tree unless noted

E23 31-10

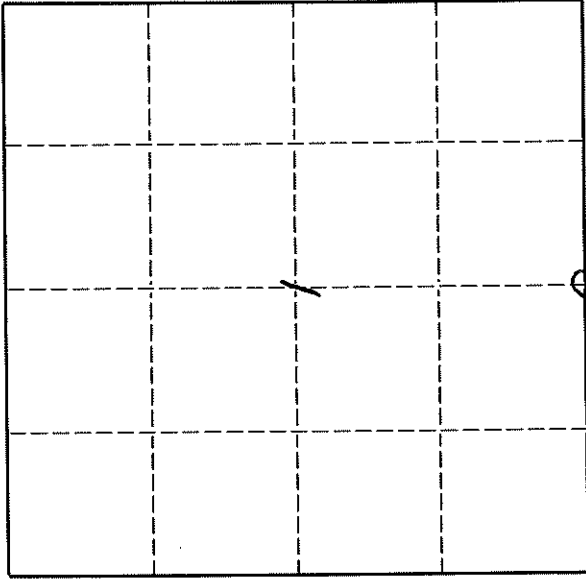
4316015880

U. S. PUBLIC LAND SURVEY MONUMENT RECORD

INSTRUCTIONS:

This record shall show the location of the corner and shall include all of the following nine elements (a through i).

- (a) Identify the corner by reference to the U.S. public land survey system.
- O = Corner monument restored.

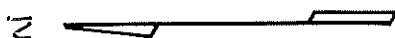
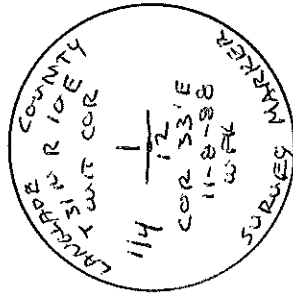
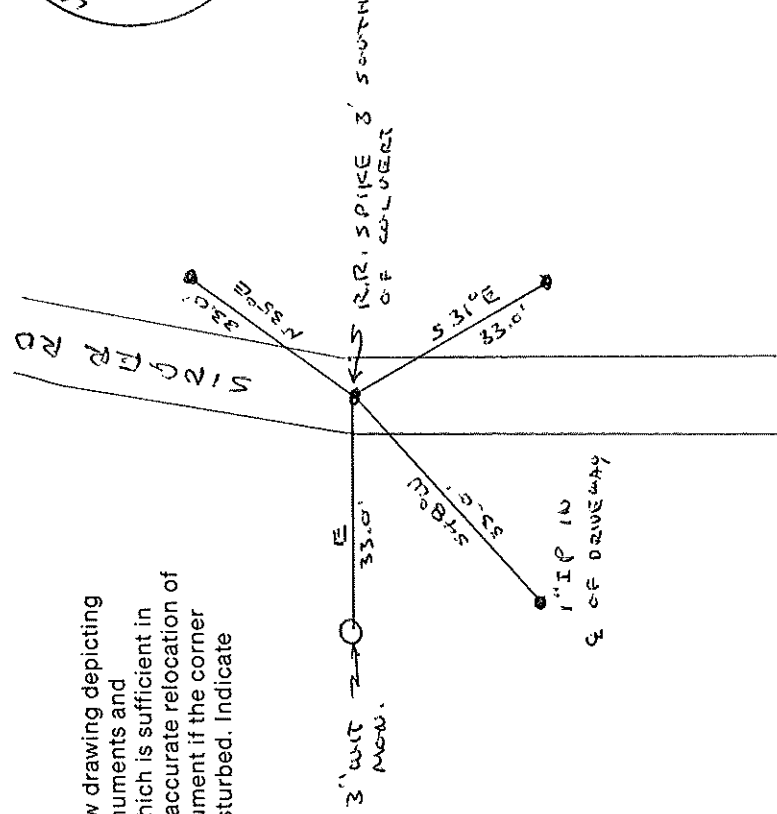


T 31 N R 10 E

ORIGINAL CORNER ESTABLISHED
 BY H.C. FELLOWS IN AUGUST
 1860
 CORNER PERPETUATED BY
 M. HATCHINSON IN THE 1920'S

- (b) Describe any record evidence, monument evidence, occupational evidence, testimonial evidence or any other material evidence you considered, and whether the monument was found or placed.
 CORNER IDENTIFIED BY RESIDENT WITNESS M. KENNEDY

- (c) In the plan view drawing below, provide reference ties to at least 4 witness monuments, or, if the location is within a municipality, to at least 2 witness monuments. (Witness monuments shall be made of concrete, natural stone, iron or other equally durable material.)
 Describe witness monuments.



43110010020

Describe any material discrepancy between the location of the corner as restored or reestablished and the location of that corner as previously restored or reestablished by distance and direction. Show the discrepancy on the plan view drawing under (d), above. Show the distances between the corner as previously restored or reestablished and (1) the corner as restored or reestablished, and (2) to at least 2 of the witness monuments shown on the drawing in (d), above.

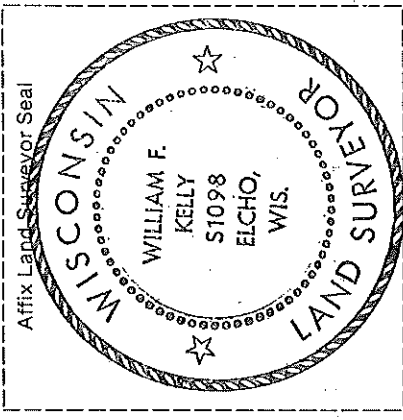
NO NE

(f) Was the corner restored through acceptance of (1) an obliterated evidence location, or, (2) a found perpetuated location.?

(2)

(g & h) Was the corner reestablished through lost corner proportionate methods? If so, show the method, including the directions and distances to other public land survey corners used as evidence or used for proportioning in determining the corner location.

NO



(i) I, WILLIAM F. KELLY
(type or print name)

certify that the corner location shown on this record was determined by me or under my direction and control and that this U.S. Public Land Survey Monument Record is correct and complete to the best of my knowledge and belief.

William F. Kelly

Signature

11-19-88

Date