

4311009 000 2023

U.S. PUBLIC LAND SURVEY MONUMENT RECORD - LANGLADE COUNTY

Note: This form is intended and designed to fulfill all requirements of Wisconsin Administrative Code, Chapter A-E 7.08 U.S. Public Land Survey Monument Record (3)(e)(b)(c)(d)(e)(f)(g)(h)(i). An additional sheet may be added to, if necessary, to conform with said requirements.

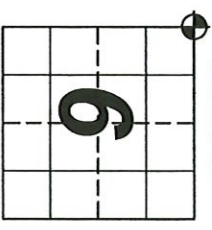
(e) Corner Location:

Langlade County Coordinates NAD83(2011):
Northing: 353036.84
Easting: 597458.85

Wisconsin Corner ID: **43110090000**
 Type of Monument: **Railroad Spike**
 Location: **Southeast Corner**

Section 9, Township 31 North, Range 10 East,
Town of Ackley, Langlade County, Wisconsin

RTK GPS direct observation
 Calibrated to HMP DP2804 (Ackley C GPS)
 3 position average on 9/15/2023



I, Chad A. Besaw, Wisconsin Professional Land Surveyor #S3029, hereby certify that the corner location on this record was determined by me and that this U.S. Public Land Survey Monument Record is correct and complete to the best of my knowledge and belief.

Chad A. Besaw
 Chad A. Besaw
 10/18/2023
 Date



(b)(f)(g)(h) Description of monument found at this corner and if it was accepted, state all evidence (material, testimonial, occupational, plats, records, other monuments) used as a basis for accepting. If not accepted or if nothing was found, state evidence used as basis for establishing location. If reestablishment through lost corner, proportionate methods, indicate all monuments, distances and directions used to establish. Indicate type of monument found or set and sign post.

Original Survey - 1860 Aug. - H. C. Fellows set section corner post.
 Maple 10 S77E 14 lks, Hemlock 14 S79W 17 lks.

1902 April - Webley started at corner FB 100-53 and again in FB 100-62, FB 102-93

2012 Dec. - Timothy Rusch found a railroad spike at corner location in CSM V16 P184.

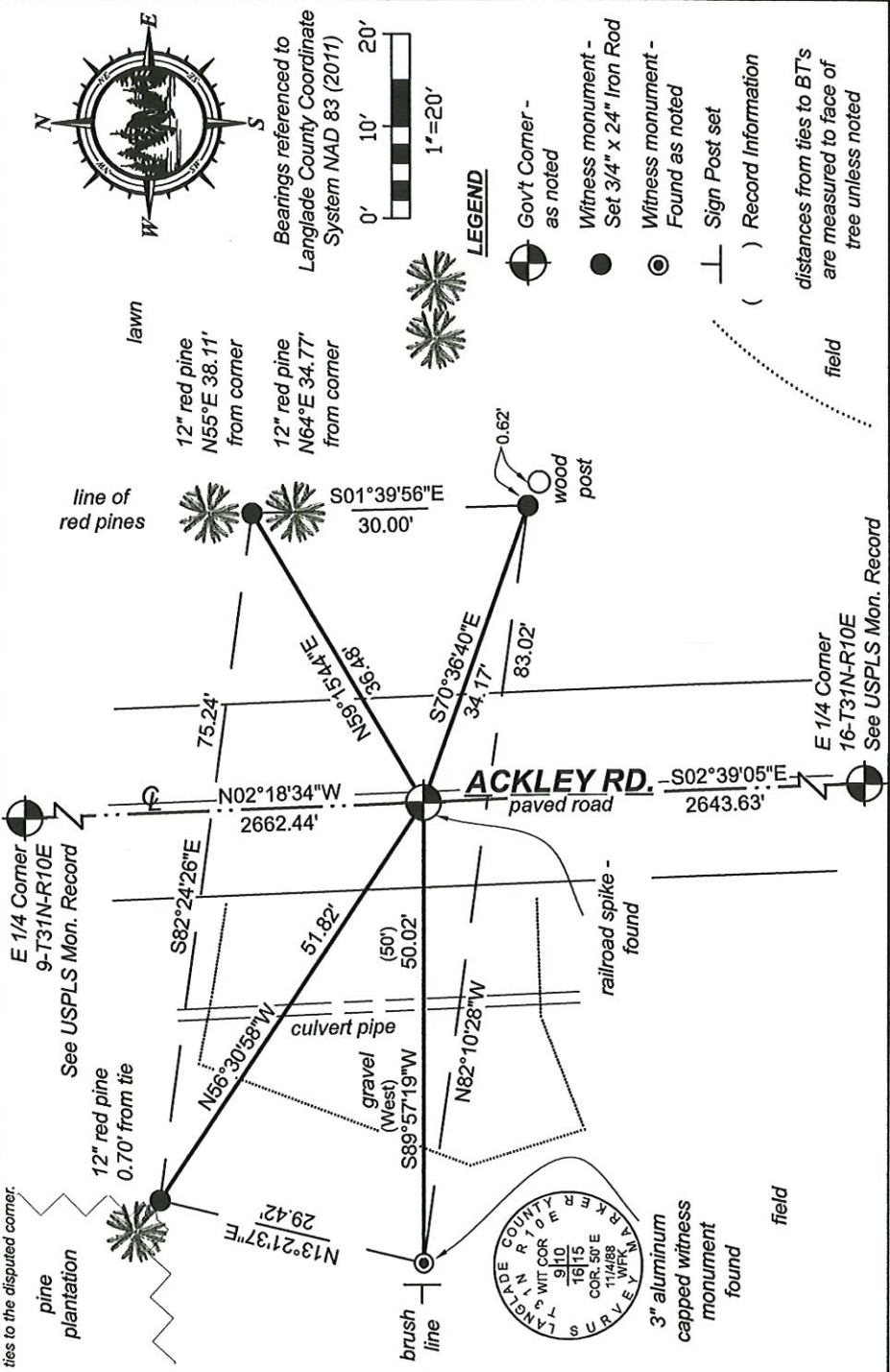
2018 Sept. - Timothy Rusch found a railroad spike at corner location in CSM V18 P162.

2019 Jan. - Timothy Rusch found a railroad spike at corner location in CSM V19 P4.

1988 Nov. - William Kelly found solid iron bar called for in Hutchinson's notes. Set railroad spike over bar. Set aluminum stamped capped witness monument 50' West, witness BT's: 4" norway pine N63°W 48.10', 10" norway pine N49°E 41.80', 10" norway pine N65°30'E 35.25'.

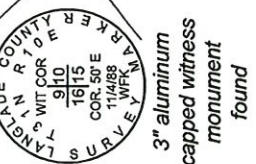
2023 Sep. - Chad A. Besaw found a railroad spike down 3" below road surface at corner location. Found witness monument and NE BT's (no nail found). Rewitnessed as shown below.

(c)(d)(e) Plan view of corner with ties to at least 4 witness monuments. If in disagreement with previously established corner, show the distances between the two corners and also indicate the ties to the disputed corner.



LEGEND

- Gov't Corner - as noted
 - Witness monument - Set 3/4" x 24" Iron Rod
 - Witness monument - Found as noted
 - Sign Post set
 - Record Information
- () distances from ties to BT's are measured to face of tree unless noted



J13 31-10

431009000

U. S. PUBLIC LAND SURVEY MONUMENT RECORD

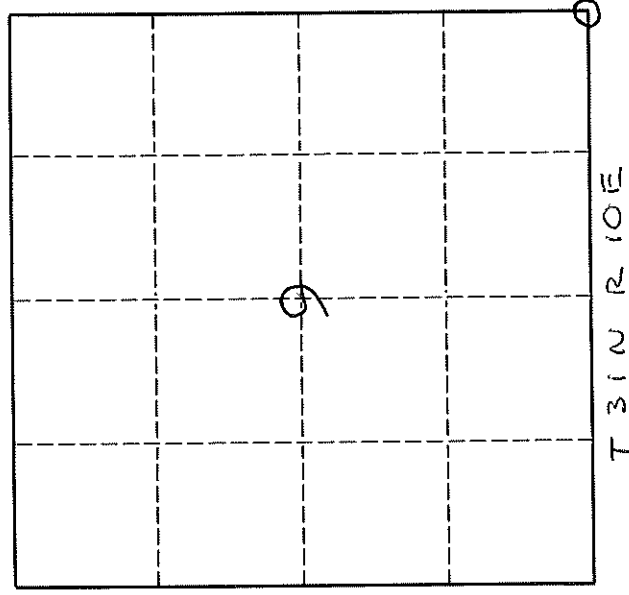
INSTRUCTIONS:

This record shall show the location of the corner and shall include all of the following nine elements (a through i).

- (a) Identify the corner by reference to the U.S. public land survey system.
- O = Corner monument restored.

ORIGINAL CORNER ESTABLISHED BY H.C. FELLOWS IN AUGUST 1860

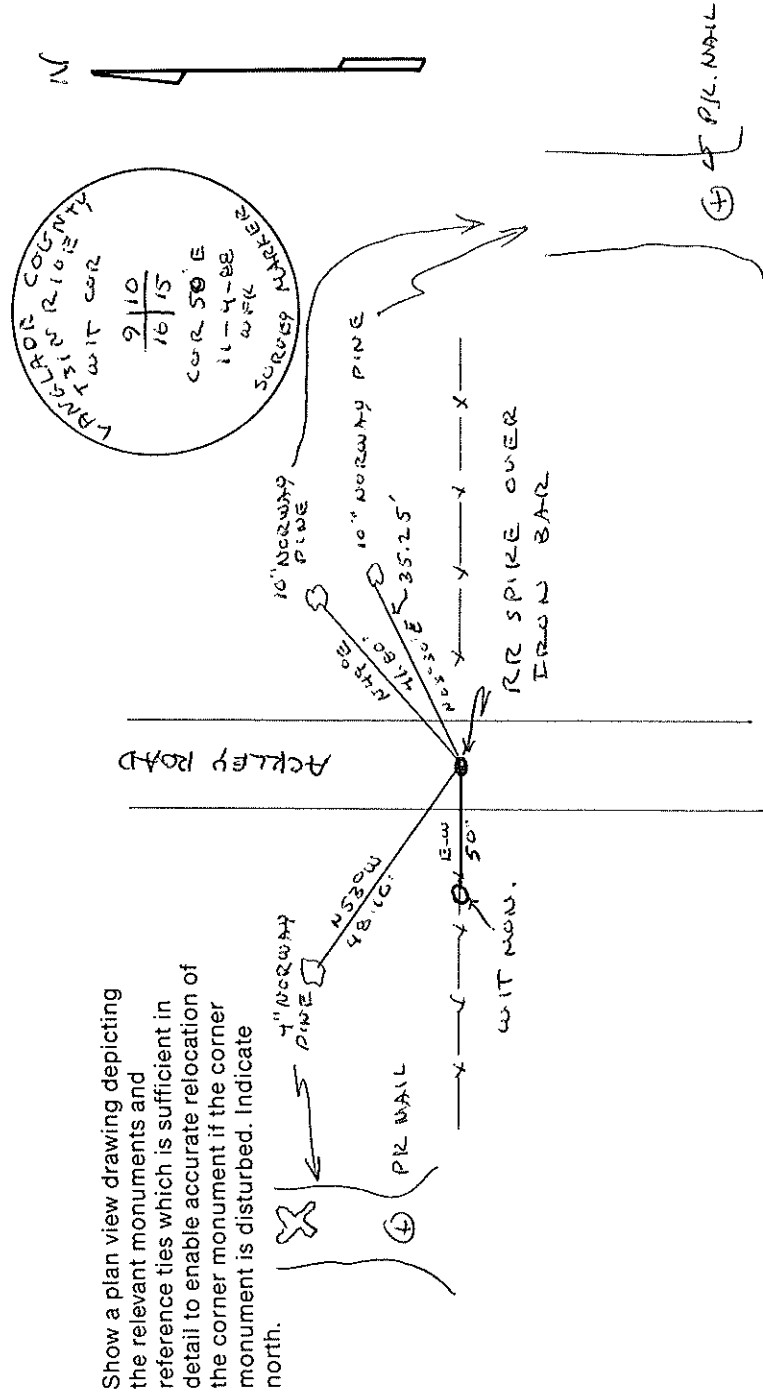
CORNER PERPETUATED BY W. HUTCHINSON IN 1920'S



- (b) Describe any record evidence, monument evidence, occupational evidence, testimonial evidence or any other material evidence you considered, and whether the monument was found or placed.

LOCATED SOLID IRON BAR CALLED FOR IN HUTCHINSON'S NOTES. SET RR SPIKE OVER BAR.

- (c) In the plan view drawing below, provide reference ties to at least 4 witness monuments, or, if the location is within a municipality, to at least 2 witness monuments. (Witness monuments shall be made of concrete, natural stone, iron or other equally durable material.) Describe witness monuments.



4310090000

Describe any material discrepancy between the location of the corner as restored or reestablished and the location of that corner as previously restored or reestablished by distance and direction. Show the discrepancy on the plan view drawing under (d), above. Show the distances between the corner as previously restored or reestablished and (1) the corner as restored or reestablished, and (2) to at least 2 of the witness monuments shown on the drawing in (d), above.

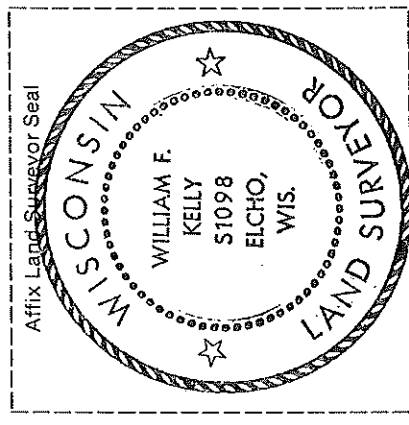
NONE

(f) Was the corner restored through acceptance of (1) an obliterated evidence location, or, (2) a found perpetuated location.?

(2)

(g & h) Was the corner reestablished through lost corner proportionate methods? If so, show the method, including the directions and distances to other public land survey corners used as evidence or used for proportioning in determining the corner location.

NO



(i) I, WILLIAM F. KELLY
(type or print name)

certify that the corner location shown on this record was determined by me or under my direction and control and that this U.S. Public Land Survey Monument Record is correct and complete to the best of my knowledge and belief.

William F. Kelly

Signature

11-19-88

Date