

4311009 2000 2023

**U.S. PUBLIC LAND SURVEY MONUMENT RECORD - LANGLADE COUNTY**

Note: This form is intended and designed to fulfill all requirements of Wisconsin Administrative Code, Chapter A-E 7.08 U.S. Public Land Survey Monument Record (3)(a)(b)(c)(d)(e)(f)(g)(h)(i). An additional sheet may be added to if necessary to conform with said requirements.

(e) Corner Location:

Wisconsin Corner ID: **43110092000**

Type of Monument: **Mag Nail**

Location: **East Quarter Corner**

**Section 9, Township 31 North, Range 10 East,**

**Town of Ackley, Langlade County, Wisconsin**

Langlade County Coordinates NAD83(2011):  
**Northing: 355697.11**

**Eastings: 597351.56**

RTK GPS direct observation  
Calibrated to HMP DP2804 (Ackley C GPS)  
3 position average on 9/15/2023



T31N-R10E

(i) I, Chad A. Besaw, Wisconsin Professional Land Surveyor #S3029, hereby certify that the corner location on this record was determined by me and that this U.S. Public Land Survey Monument Record is correct and complete to the best of my knowledge and belief.

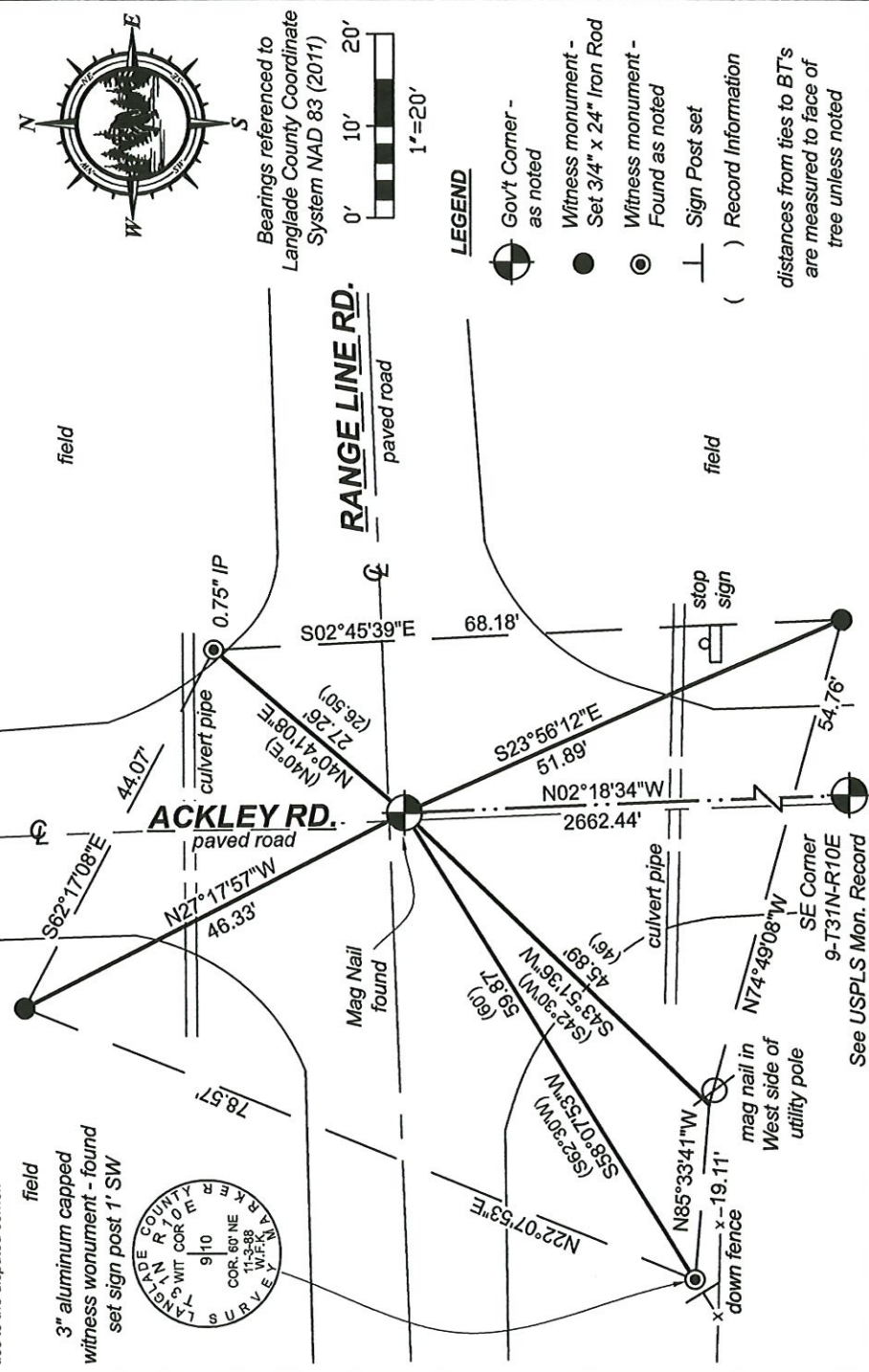
*Chad A. Besaw*  
Chad A. Besaw  
10/18/2023  
Date



(b)(f)(g)(h) Description of monument found at this corner and if it was accepted, state all evidence (material, testimonial, occupational, plats, records, other monuments) used as a basis for accepting. If not accepted or if nothing was found, state evidence used as basis for establishing location. If reestablishment through lost corner proportionate methods, indicate all monuments, distances and directions used to establish. Indicate type of monument found or set and sign post.

- Original Survey – 1860 Aug. - H. C. Fellows set post at midpoint. Birch 16 S40W 7 lks, Birch 12 N79E 30 lks.
- 1895 - B.F. Dorr remeasured BT's and established new BT's. Birch 12 N73W 30 lks, Birch 25 S28W 7 lks, Birch 20 N48W 86 lks, Birch 15 S31E 97 1/3 lks. FB 140-126
- 1902 April – Webley set grey boulders 8x10x16 with cross in top. BT Pine Stump 40 N27°W 65 lks. FB 100-48. Ran East from corner FB 100-54.
- 1919 May – Webley at corner FB 100-62, no date at corner again in FB 102-93.
- Hutchinson at corner FB 94-175.
- 1989 June – William Kelly found an iron bar in road at corner location in CSM V4 P177.
- 1994 Dec. – Devon Vanden Heuvel found a railroad spike over a 1" sq iron rod at corner location in CSM V6-P77.
- 1995 May - WISDOT R/W Project Number 0631-07-28, wetland mitigation, Sheet 4.0 references corner in location map. Langlade Co Map #201129
- 2010 May - Mike Mosher and Vreeland Associates found a mag nail for a section breakdown survey of Section 3 based on assumed coordinates. Langlade Co Map #10788
- 2010 June - LaVerne H. Mosher found a mag nail at corner location for a survey in Section 3. Langlade Co Map #20394
- 2018 Sept. – Timothy Rusch found a PK Nail at corner location in CSM V18 P162.
- 1988 Nov. - William Kelly found 1" iron bar 12" below road surface called for in Hutchinson's notes. Set railroad spike over iron bar and old buggy axel. Witnessed with aluminum stamped capped monument S62°30'W 60', 1" IP N50°W 30', IP N40°E 26.5, tel box N40°E 44.75', 1" IP S42°30'W 31', nail in power pole 3010-9R1 S42°30'W 46'
- 2023 Sep. - Chad A. Besaw found a mag nail at the corner location. Found NE iron tie, SW witness monument and SW mag nail in power pole tie from previous tie sheet. Rewitnessed as shown below.

(c)(d)(e) Plan view of corner with ties to at least 4 witness monuments. If in disagreement with previously established corner, show the distances between the two corners and also indicate the ties to the disputed corner.



See USPLS Mon. Record

613 31-10

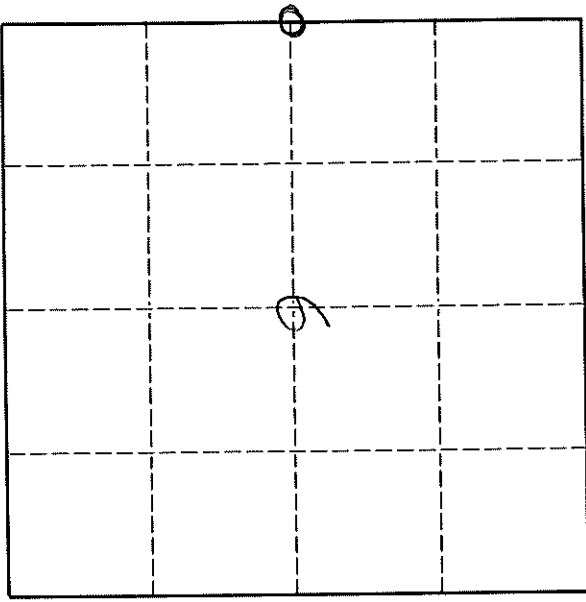
4316092000

# U. S. PUBLIC LAND SURVEY MONUMENT RECORD

## INSTRUCTIONS:

This record shall show the location of the corner and shall include all of the following nine elements (a through i).

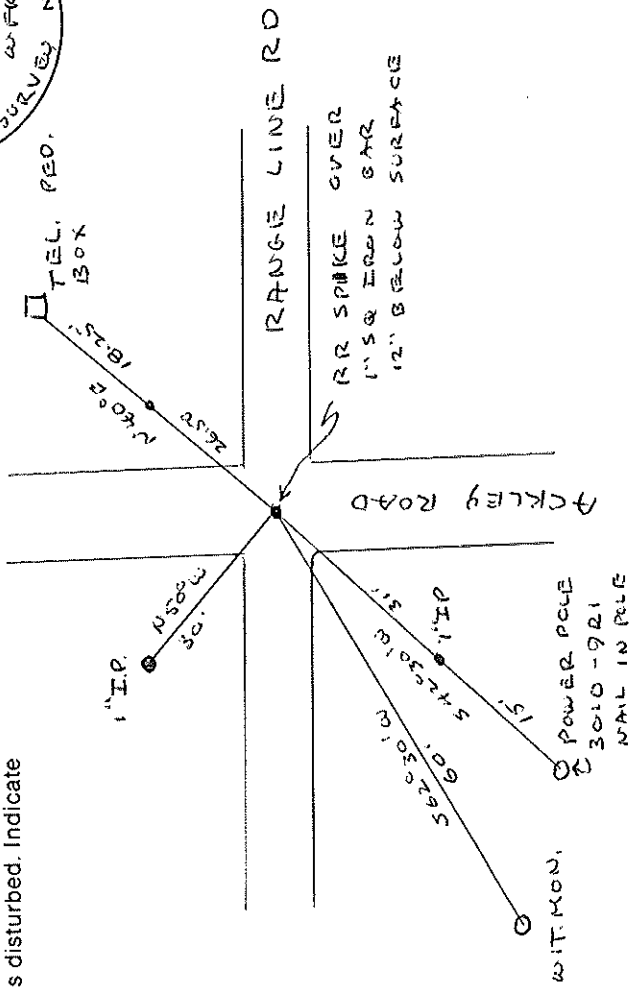
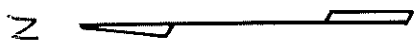
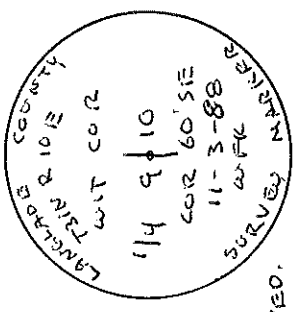
- (a) Identify the corner by reference to the U.S. public land survey system.  
O = Corner monument restored.
- ORIGINAL CORNER ESTABLISHED BY H.C. FELLOWS IN AUGUST 1860
- CORNER PERPETUATED BY M. HUTCHINSON IN 1920'S



T 31 N R 10 E

- (b) Describe any record evidence, monument evidence, occupational evidence, testimonial evidence or any other material evidence you considered, and whether the monument was found or placed.  
LOCATED 1" IRON BAR 12" BELOW ROAD SURFACE CALLED FOR IN HUTCHINSON'S NOTES. SET RR SPIKE OVER IRON BAR AND OLD BUGGY AXEL.

- (c) In the plan view drawing below, provide reference ties to at least 4 witness monuments, or, if the location is within a municipality, to at least 2 witness monuments. (Witness monuments shall be made of concrete, natural stone, iron or other equally durable material).  
Describe witness monuments.  
3" ALUM WIT. MON.



- (d) Show a plan view drawing depicting the relevant monuments and reference ties which is sufficient in detail to enable accurate relocation of the corner monument if the corner monument is disturbed. Indicate north.

431100 92000

Describe any material discrepancy between the location of the corner as restored or reestablished and the location of that corner as previously restored or reestablished by distance and direction. Show the discrepancy on the plan view drawing under (d), above. Show the distances between the corner as previously restored or reestablished and (1) the corner as restored or reestablished, and (2) to at least 2 of the witness monuments shown on the drawing in (d), above.

NONE

(f) Was the corner restored through acceptance of (1) an obliterated evidence location, or, (2) a found perpetuated location.?

(2)

(g & h) Was the corner reestablished through lost corner proportionate methods? If so, show the method, including the directions and distances to other public land survey corners used as evidence or used for proportioning in determining the corner location.

NO

(i) I, WILLIAM F. KELLY  
(type or print name)

certify that the corner location shown on this record was determined by me or under my direction and control and that this U.S. Public Land Survey Monument Record is correct and complete to the best of my knowledge and belief.

Signature William F. Kelly Date 11-19-88

