

4311013 0020 2023

U.S. PUBLIC LAND SURVEY MONUMENT RECORD - LANGLADE COUNTY

Note: This form is intended and designed to fulfill all requirements of Wisconsin Administrative Code, Chapter A-E 7.08 U.S. Public Land Survey Monument Record (3)(e)(b)(c)(d)(e)(f)(g)(h)(i). An additional sheet may be added to if necessary to conform with said requirements.

(a) Corner Location:

Wisconsin Corner ID: **43110130020**
 Type of Monument: **3" Aluminum Capped Monument**
 Location: **South Quarter Corner**
Section 13, Township 31 North, Range 10 East,
Town of Ackley, Langlade County, Wisconsin
 Langlade County Coordinates NAD83(2011):
Northing: 348097.47
Easting: 610870.82
 RTK GPS direct observation
 Calibrated to HMP DP2804 (Ackley C GPS)
 3 position average on 10/06/2023



T31N-R10E

(i) I, Chad A. Besaw, Wisconsin Professional Land Surveyor #S3029, hereby certify that the corner location on this record was determined by me and that this U.S. Public Land Survey Monument Record is correct and complete to the best of my knowledge and belief.

Chad A. Besaw

Chad A. Besaw

10/18/2023

Date



(b)(f)(g)(h) Description of monument found at this corner and if it was accepted, state all evidence (materials, testimonial, occupational, plats, records, other monuments) used as a basis for accepting. If not accepted or if nothing was found, state evidence used as basis for establishing location. If reestablishment through lost corner, proportionate methods, indicate all monuments, distances and directions used to establish. Indicate type of monument found or set and sign post.

Original Survey - 1860 Aug. - H. C. Fellows set quarter section post.

Birch 10 S70E 7 lks, Birch 10 N10W 26 lks.

1903 Nov. - B.F. Dorr at corner FB 149-8.

1982 May - Mark Stibbe set corner (2.25"x30" aluminum pipe with cap) for a survey of the South line of the SE 1/4 of 13-31-10. Langlade Co Map #10001

1990 Nov. - Thomas Arnott found a county monument for a survey of part of the W1/2 of Section 24. Langlade Co Map #10479

2000 Nov. - Daniel Higginbotham shows corner in CSM V9 P144.

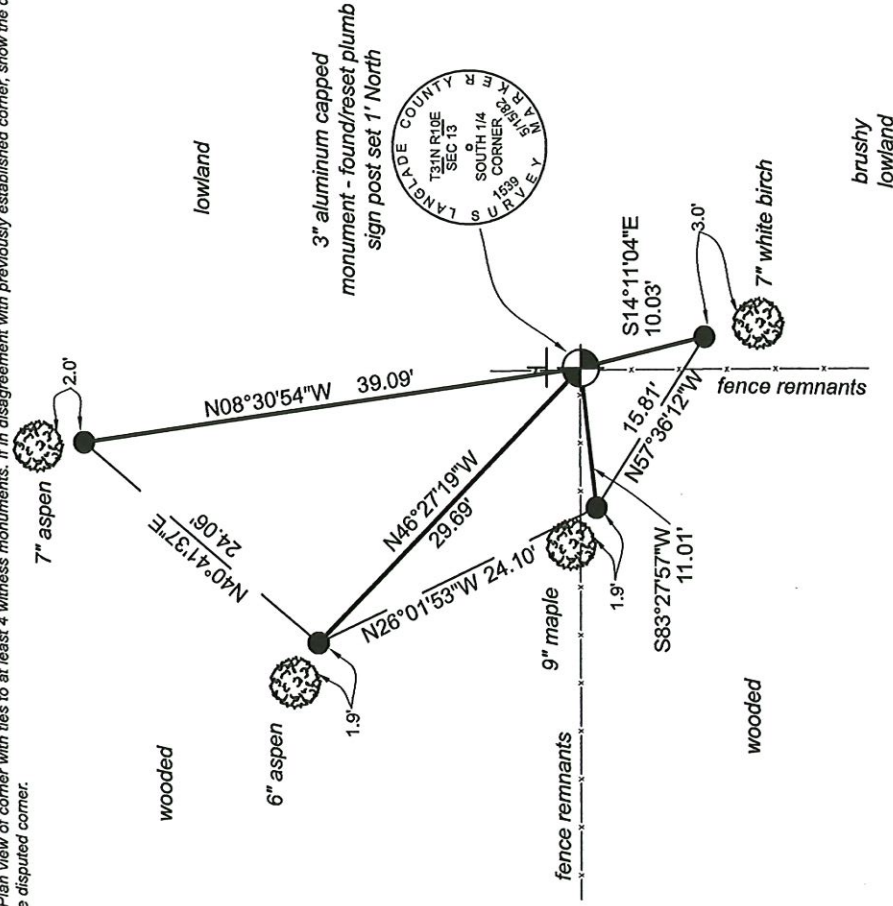
2010 Nov. - Timothy Rusch found aluminum capped monument at corner position in CSM V16 P64.

2019 Dec. - Timothy Rusch found a capped aluminum monument in a survey of the NE1/4 of the SE 1/4 of Section 13. Langlade Co Map #11066

1982 May - Mark Stibbe found no evidence of original post, set 2.25"x24" capped and stamped monument at intersection of old down fences. Witnessed with nails set BT's: 6" maple N50°W 7.23', 8" maple North 5.00', 3" maple S60°W 11.32'.

2023 Oct. - Chad A. Besaw found a 3" stamped aluminum capped monument at corner location. Monument found tipped, reset plumb and up 10". Checked with BT remains as near as possible. Stibbe's BT's remain, however nails were not recovered. Fences referenced in previous tie sheet only remain in remnant pieces. Rewitnessed as shown below.

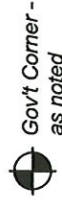
(c)(d)(e) Plan view of corner with ties to at least 4 witness monuments. If in disagreement with previously established corner, show the distances between the two corners and also indicate the ties to the disputed corner.



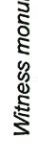
Bearings referenced to
Langlade County Coordinate
System NAD 83 (2011)



LEGEND



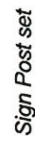
Gov't Corner - as noted



Witness monument - Set 3/4" x 24" Iron Rod



Witness monument - Found as noted



Sign Post set

() Record Information

distances from ties to BT's are measured to face of tree unless noted

N23 31-10

CERTIFIED LAND CORNER RESTORATION

Index No. N-23

State of Wisconsin }
County of LANGLADE } ss.

I MARK A. STIBBE, do hereby certify that on the 15TH day of MAY, 1982, I found evidence of the SOUTH 1/4 corner of SECTION 13 Township 31, North, Range 10 EAST, Fourth Principal Meridian, as described hereon; and that from this evidence I established a new monument and accessories as described hereon to perpetuate the original location of this corner.

Resident witnesses:

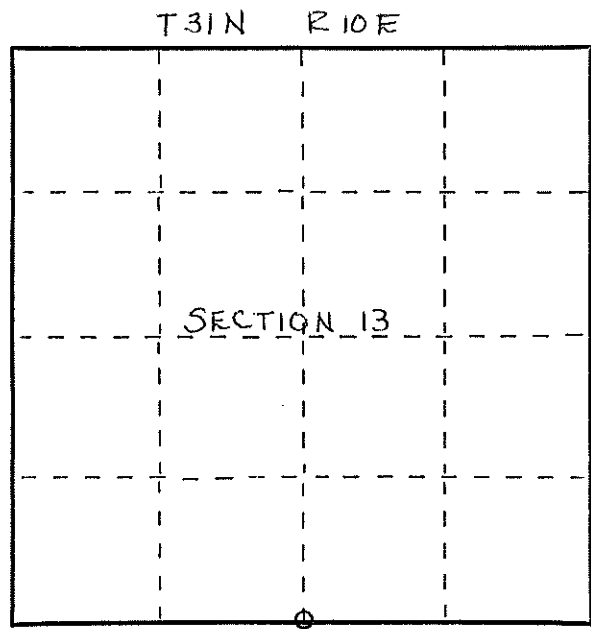
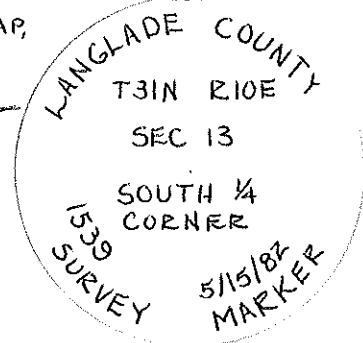
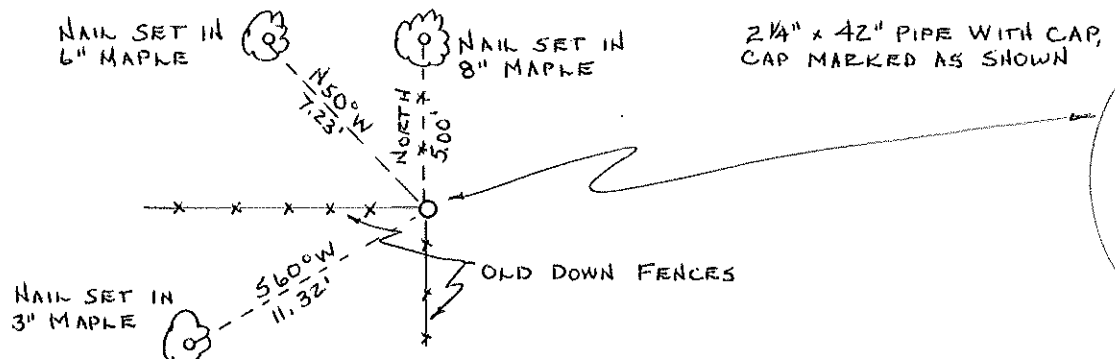
.....
.....
.....

History of original corner establishment:
POST SET BY HIRAM FELLOWS IN AUGUST, 1860
POST CALLED OUT BY B.F. DORR NOTES OF NOVEMBER 27, 1903

Description of corner evidence found:
FOUND NO EVIDENCE OF ORIGINAL POST. SET MONUMENT AT INTERSECTION OF OLD DOWN FENCES.



Description of monument and accessories I established to perpetuate the original location of this corner:



○ = Corner monument restored.

Dated at ANTIGO, Wis., this 15TH day of MAY, 1982.

Signature Mark A. Stibbe Title REGISTERED LAND SURVEYOR Registration No. 1539
(County Surveyor, Registered Land Surveyor, or other duly authorized official)

Office of Register of Deeds, County of....., I hereby certify that the within instrument was filed in this office for record on the.....day of....., 19..... at.....o'clock..... M.

.....
(Register of Deeds)

By..... Deputy

FORM 985 H. C. MILLER CO., MILWAUKEE
4311013000