

4311022 0000 2023

U.S. PUBLIC LAND SURVEY MONUMENT RECORD - LANGLADE COUNTY

Note: This form is intended and designed to fulfill all requirements of Wisconsin Administrative Code, Chapter A-E 7.08 U.S. Public Land Survey Monument Record (3)(a)(b)(c)(d)(e)(f)(g)(h)(i). An additional sheet may be added to it necessary to conform with said requirements.

(a) Corner Location:

Langlade County Coordinates NAD83(2011):
Northing: 342920.46
Easting: 603007.35

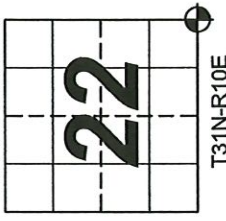
Wisconsin Corner ID: 43110220000

Type of Monument: 1" Iron Pipe

Location: Southeast Corner

Section 22, Township 31 North, Range 10 East,

Town of Ackley, Langlade County, Wisconsin



I, Chad A. Besaw, Wisconsin Professional Land Surveyor #S3029, hereby certify that the corner location on this record was determined by me and that this U.S. Public Land Survey Monument Record is correct and complete to the best of my knowledge and belief.

Chad A. Besaw
Chad A. Besaw

10/18/2023

Date



(b)(1)(g)(h) Description of monument found at this corner and if it was accepted, state all evidence (material, testimonial, occupational, plats, records, other monuments) used as a basis for accepting. If not accepted or if nothing was found, state evidence used as basis for establishing location. If reestablishment through lost corner proportionate methods, indicate all monuments, distances and directions used to establish. Indicate type of monument found or set and sign post.

Original Survey - 1860 Aug. - H. C. Fellows set section corner post. Sugar 10 S65E 27 lks, Birch 16 N26W 8 lks.

1990 April - William Kelly found a 1" Iron Pipe at corner location for a survey of the E 1/2 of the SE 1/4 of Section 27. Langlade Co Map #30442.

1992 Nov. - WISDOT Project Number 9015-07-21, S.T.H. 64, shows 1" Iron Pipe at corner location on sheet 4.6. Langlade Co Map #10369

1994 March - Dave Tlusty set a small PK nail over reading in road at approximate corner location in survey of NW 1/4 of Section 27. Langlade Co Map #30443

1998 April - Dennis Roberts set PK nail set from USPLS Monument Record ties for a Section subdivision summary. Langlade Co Map #10488.

1998 April - Dennis Roberts set a PK nail at corner location in CSM V8 P24.

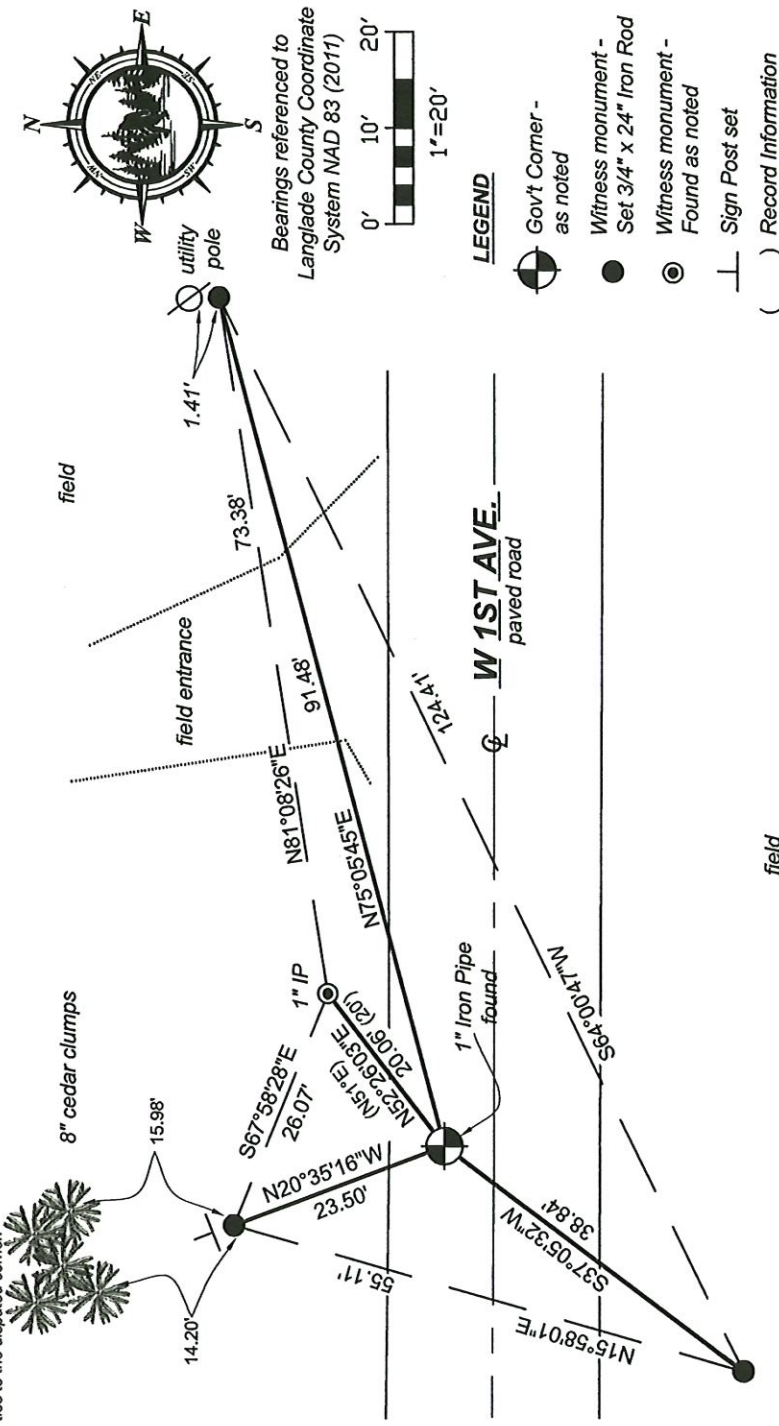
2009 Feb. - Timothy Rusch found an iron pipe at corner location in CSM V15 P114.

2019 Nov. - Timothy Rusch found an iron pipe at corner location in CSM V19 P48.

1988 Nov. - William Kelly located 1.25" solid iron bar 19" below road surface and set a 1" iron pipe over bar flush with road surface at corner location. Witnessed with 6" cedar clumps N24°W 40.10', N14°W 38.60', and IP N51°E 20', and a stamped aluminum witness monument 33' South.

2023 Sep. - Chad A. Besaw found and accepted a 1" Iron Pipe flush with road surface at the corner location. Pounded pipe down 1" below road surface. Found Kelly's cedar clumps and NE iron pipe ties. Fence and aluminum witness monument are gone. Rewitnessed as shown below.

(c)(1)(e) Plan view of corner with ties to at least 4 witness monuments. If in disagreement with previously established corner, show the distances between the two corners and also indicate the ties to the disputed corner.



field

R 17 31-10

43116220000

U. S. PUBLIC LAND SURVEY MONUMENT RECORD

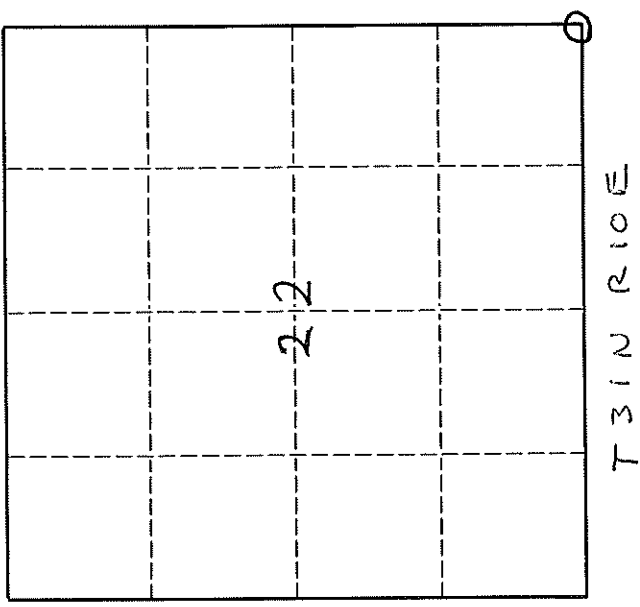
INSTRUCTIONS:

This record shall show the location of the corner and shall include all of the following nine elements (a through i).

- (a) Identify the corner by reference to the U.S. public land survey system.
O = Corner monument restored.

ORIGINAL CORNER ESTABLISHED BY H.R. FELLOWS IN AUGUST 1860

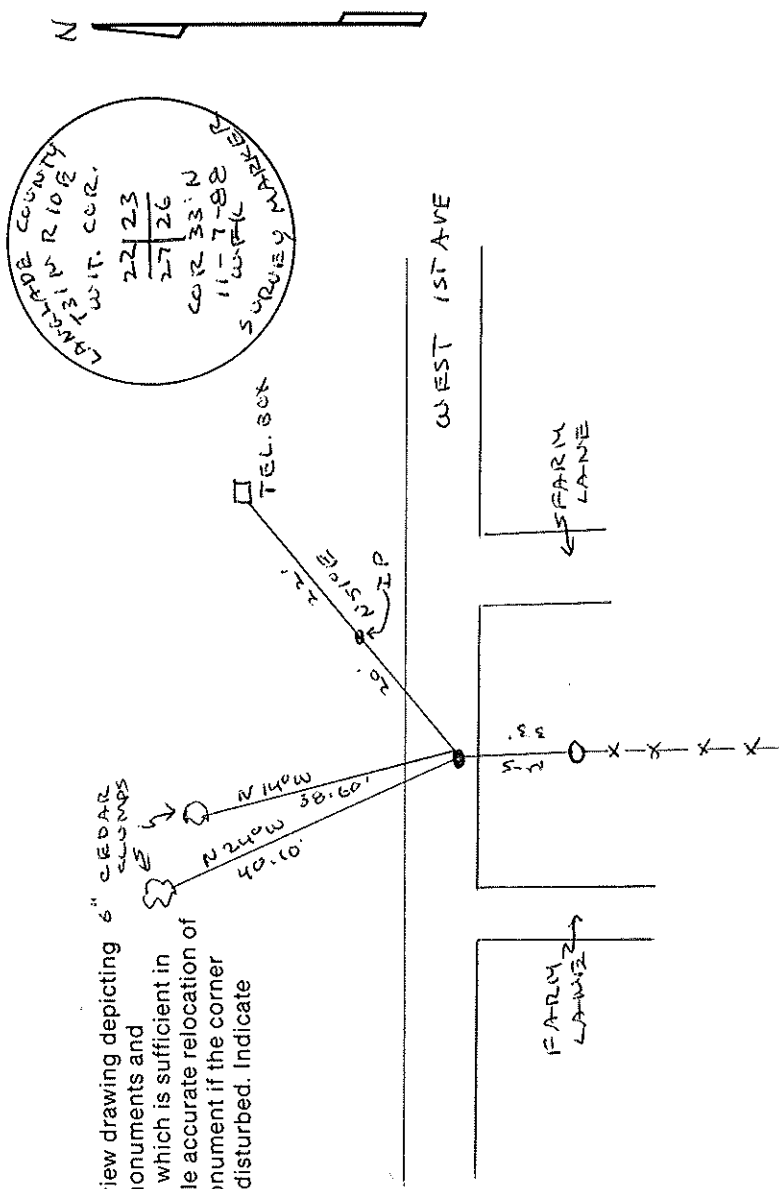
CORNER PERPETUATED BY N. HUNTCHINSON IN 1920'S



- (b) Describe any record evidence, monument evidence, occupational evidence, testimonial evidence or any other material evidence you considered, and whether the monument was found or placed.

LOCATED 1 1/4" SOLID IRON BAR 19" BELOW ROAD SURFACE SET 1" I.P. OVER BAR FLUSH WITH ROAD SURFACE

- (c) In the plan view drawing below, provide reference ties to at least 4 witness monuments, or, if the location is within a municipality, to at least 2 witness monuments. (Witness monuments shall be made of concrete, natural stone, iron or other equally durable material.) Describe witness monuments.



- (d) Show a plan view drawing depicting 6" CEDAR CLUMPS the relevant monuments and reference ties which is sufficient in detail to enable accurate relocation of the corner monument if the corner monument is disturbed. Indicate north.

4310220000

Describe any material discrepancy between the location of the corner as restored or reestablished and the location of that corner as previously restored or reestablished by distance and direction. Show the discrepancy on the plan view drawing under (d), above. Show the distances between the corner as previously restored or reestablished and (1) the corner as restored or reestablished, and (2) to at least 2 of the witness monuments shown on the drawing in (d), above.

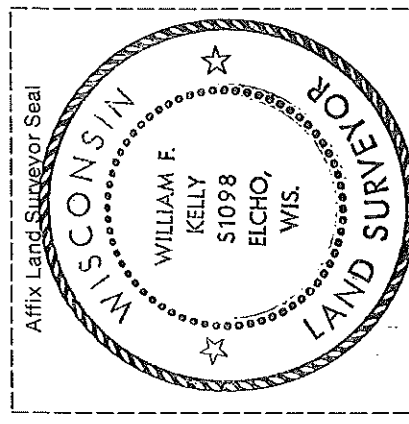
None

(f) Was the corner restored through acceptance of (1) an obliterated evidence location, or, (2) a found perpetuated location,?

(2)

(g & h) Was the corner reestablished through lost corner proportionate methods? If so, show the method, including the directions and distances to other public land survey corners used as evidence or used for proportioning in determining the corner location.

no



(i) I, William F. Kelly (type or print name)

certify that the corner location shown on this record was determined by me or under my direction and control and that this U.S. Public Land Survey Monument Record is correct and complete to the best of my knowledge and belief.

Signature William F. Kelly Date 11-12-88