

4311027 0000 2023

U.S. PUBLIC LAND SURVEY MONUMENT RECORD - LANGLADE COUNTY

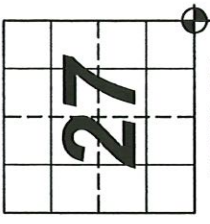
Note: This form is intended and designed to fulfill all requirements of Wisconsin Administrative Code, Chapter A-E 7.08 U.S. Public Land Survey Monument Record (3)(a)(b)(c)(d)(e)(f)(g)(h)(i). An additional sheet may be added to if necessary to conform with said requirements.

(a) Corner Location:

Lanlade County Coordinates NAD83(2011):
Northing: 337593.45
Easting: 602957.97

Wisconsin Corner ID: 43110270000
Type of Monument: 3" Aluminum Capped Monument
Location: Southeast Corner

Section 27, Township 31 North, Range 10 East,
Town of Ackley, Lanlade County, Wisconsin



T31N-R10E

(i) I, Chad A. Besaw, Wisconsin Professional Land Surveyor #S3029, hereby certify that the corner location on this record was determined by me and that this U.S. Public Land Survey Monument Record is correct and complete to the best of my knowledge and belief.

Chad A. Besaw
Chad A. Besaw
10/18/2023
Date



(b)(f)(g)(h) Description of monument found at this corner and if it was accepted, state all evidence (material, testimonial, occupational, plats, records, other monuments) used as a basis for accepting. If not accepted or if nothing was found, state evidence used as basis for establishing location. If reestablishment through lost corner proportionate methods, indicate all monuments, distances and directions used to establish. Indicate type of monument found or set and sign post.

Original Survey – 1860 Aug. - H. C. Fellows set section corner post. Sugar 10 N46W 9 lks, Birch 11 S27E 31 lks.

1882 – Dort at corner. BT's Pine 24 N61E 18 lks, Birch 9 N35W 38 lks. FB 149-59.

1907 – Brooks at corner. Found original Sugar BT, badly rotten. FB 94-31.

1961 Jan. – Michigan Wisconsin Pipe Line Co. Shows corner location at fence line in location map. Lanlade Co Map #40127.

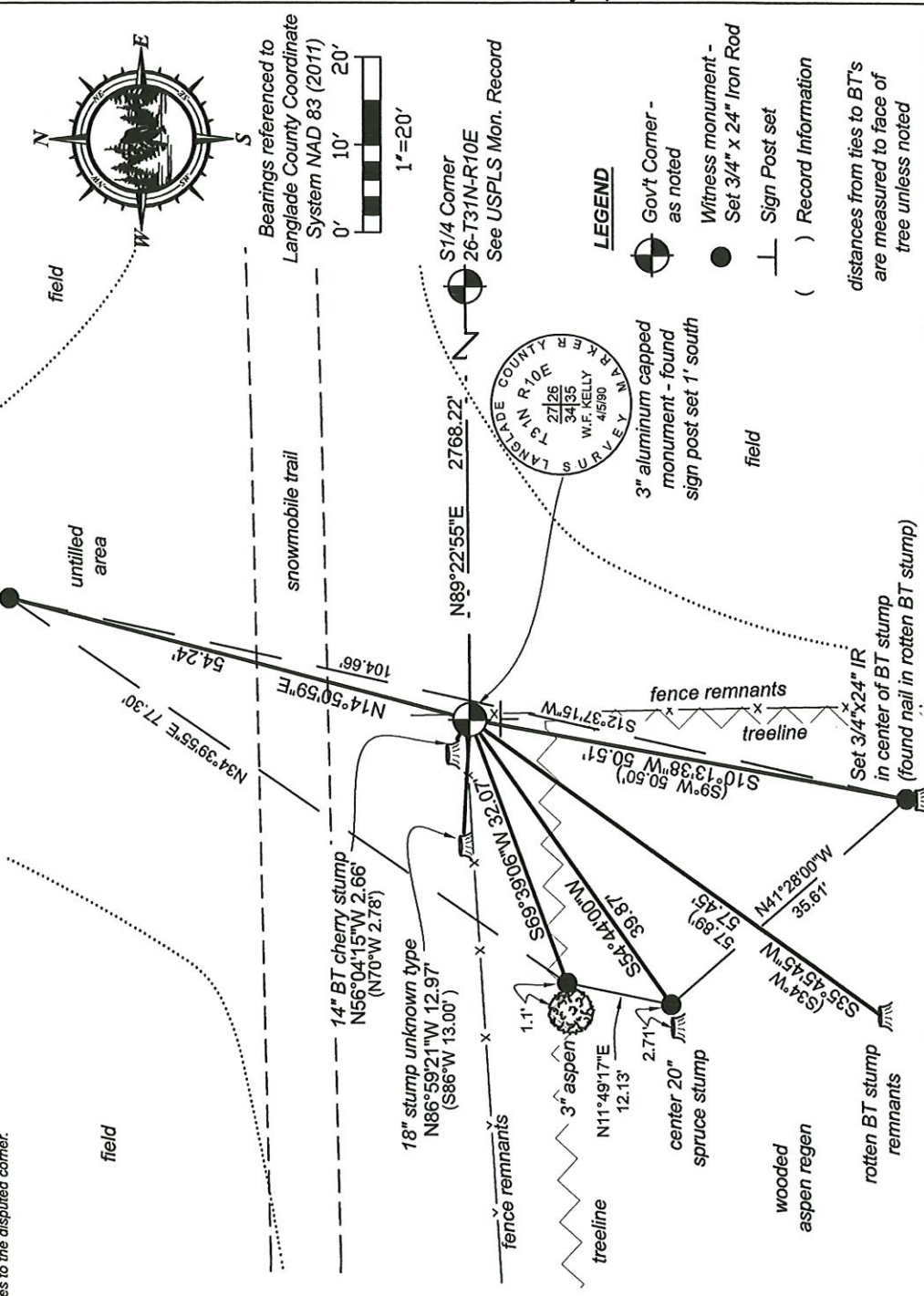
1990 April – William Kelly set a 3" aluminum monument at corner location for a survey of the E 1/2 of the SE 1/4 of Section 27. Lanlade Co Map #30442.

1992 Nov. – WISDOT Project Number 9015-07-21, S.T.H. 64, notes the corner was not found on sheet 4.6. Lanlade Co Map #10369.

1990 May - W.F. Kelly located iron pipe at 3 way fence intersection identified by property owner. Set 3" aluminum monument and marked bearing trees. 10" cherry N70°W 2.78', no description S86°W 13.00', 7" spruce S34°W 57.89', 6" spruce S9°W 50.50'.

2023 Oct. - Chad A. Besaw found and accepted Kelly's 3" aluminum capped monument 12" down in a dirt berm with only stumps of bearing trees remaining - one with a nail remnant. Fence lines have been destroyed and only pieces remain. The original notes' call for the creek to the West agree well with corner position. Set sign post 1' South of corner and re-witnessed as shown below.

(c)(d)(e) Plan view of corner with ties to at least 4 witness monuments. If in disagreement with previously established corner, show the distances between the two corners and also indicate the ties to the disputed corner.



V17 31-10

4311027000

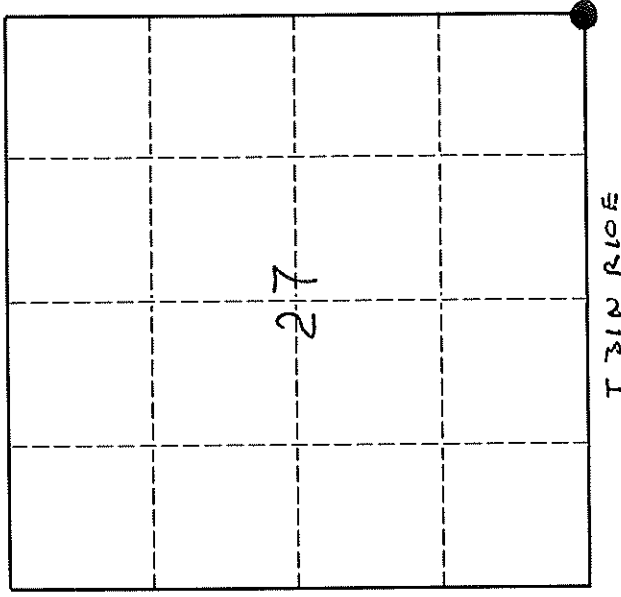
U. S. PUBLIC LAND SURVEY MONUMENT RECORD

INSTRUCTIONS:

This record shall show the location of the corner and shall include all of the following nine elements (a through i).

- (a) Identify the corner by reference to the U.S. public land survey system.
- O = Corner monument restored.

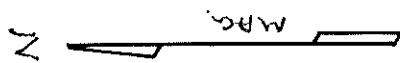
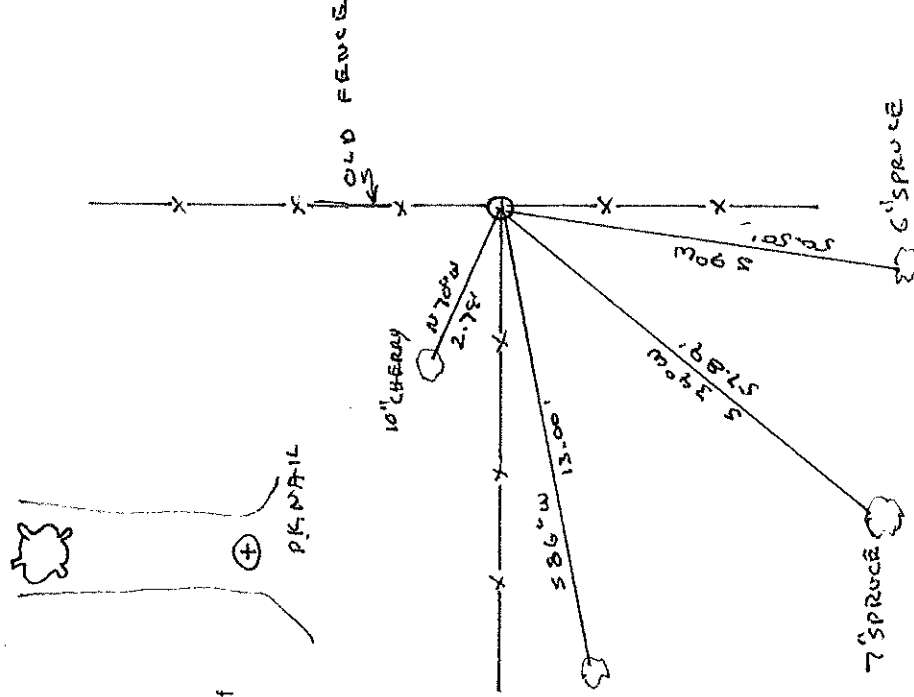
ORIGINAL CORNER ESTABLISHED BY H. FELLOWS IN AUG. 1960



- (b) Describe any record evidence, monument evidence, occupational evidence, testimonial evidence or any other material evidence you considered, and whether the monument was found or placed.

LOCATED IRON PIPE AT 3 WAY FENCE INTERSECTION IDENTIFIED BY PROPERTY OWNER AS CORNER. SET 3" ALUM MONUMENT AND MARKED BEARING TREES

- (c) In the plan view drawing below, provide reference ties to at least 4 witness monuments, or, if the location is within a municipality, to at least 2 witness monuments. (Witness monuments shall be made of concrete, natural stone, iron or other equally durable material.) Describe witness monuments.



L-1-N

- (d) Show a plan view drawing depicting the relevant monuments and reference ties which is sufficient in detail to enable accurate relocation of the corner monument if the corner monument is disturbed. Indicate north.

