

4311029 2000 2023

U.S. PUBLIC LAND SURVEY MONUMENT RECORD - LANGLADE COUNTY

Note: This form is intended and designed to fulfill all requirements of Wisconsin Administrative Code, Chapter A-E 7.08 U.S. Public Land Survey Monument Record (3)(a)(b)(c)(d)(e)(f)(g)(h)(i). An additional sheet may be added to, if necessary to conform with said requirements.

(a) Corner Location:

Langlade County Coordinates NAD83(2011):
Northing: 340451.27
Easting: 592589.80

Wisconsin Corner ID: 43110292000
Type of Monument: 1.5" Iron Pipe
Location: East Quarter Corner

Section 29, Township 31 North, Range 10 East,
Town of Ackley, Langlade County, Wisconsin



T31N-R10E

(b)(f)(g)(h) Description of monument found at this corner and if it was accepted, state all evidence (material, testimonial, occupational, plats, records, other monuments) used as a basis for accepting. If not accepted or if nothing was found, state evidence used as basis for establishing location. If reestablishment through lost corner proportionate methods, indicate all monuments, distances and directions used to establish. Indicate type of monument found or set and sign post.

Original Survey – 1860 Aug. – H. C. Fellows set quarter section post.
Hemlock 8 S64E 8 lks, Hemlock 7 S65W 6 lks.

1919 – Baker at corner. FB 149-13

1923 Aug. – Webley at corner. FB 102-82.

1989 Aug. – William Kelly set a nail at corner location for a survey in the S1/2 of the SW 1/4 of Section 21. Langlade Co Map #30191

2005 Nov. – Phillip Hargrove shows he found a brass capped monument at corner location in a Section breakdown for a survey in Sections 33 and 34. Langlade Co Map #20299.

2015 July – Timothy Rusch found an Iron Pipe at corner location in CSM V17 P152.

2018 Nov. – Timothy Rusch found an Iron Pipe at corner location CSM V19 P2.

1989 Dec. – William Kelly found and accepted a 1/4" Iron Bar 3" below surface of road at corner location. Set Nail in road over iron bar, set witness monument (3" aluminum). Witnessed with PK nails at base of BTs: 14" maple N14°E 48.80', no desc. S21°E 67.80', 4" basswood 64.80'.

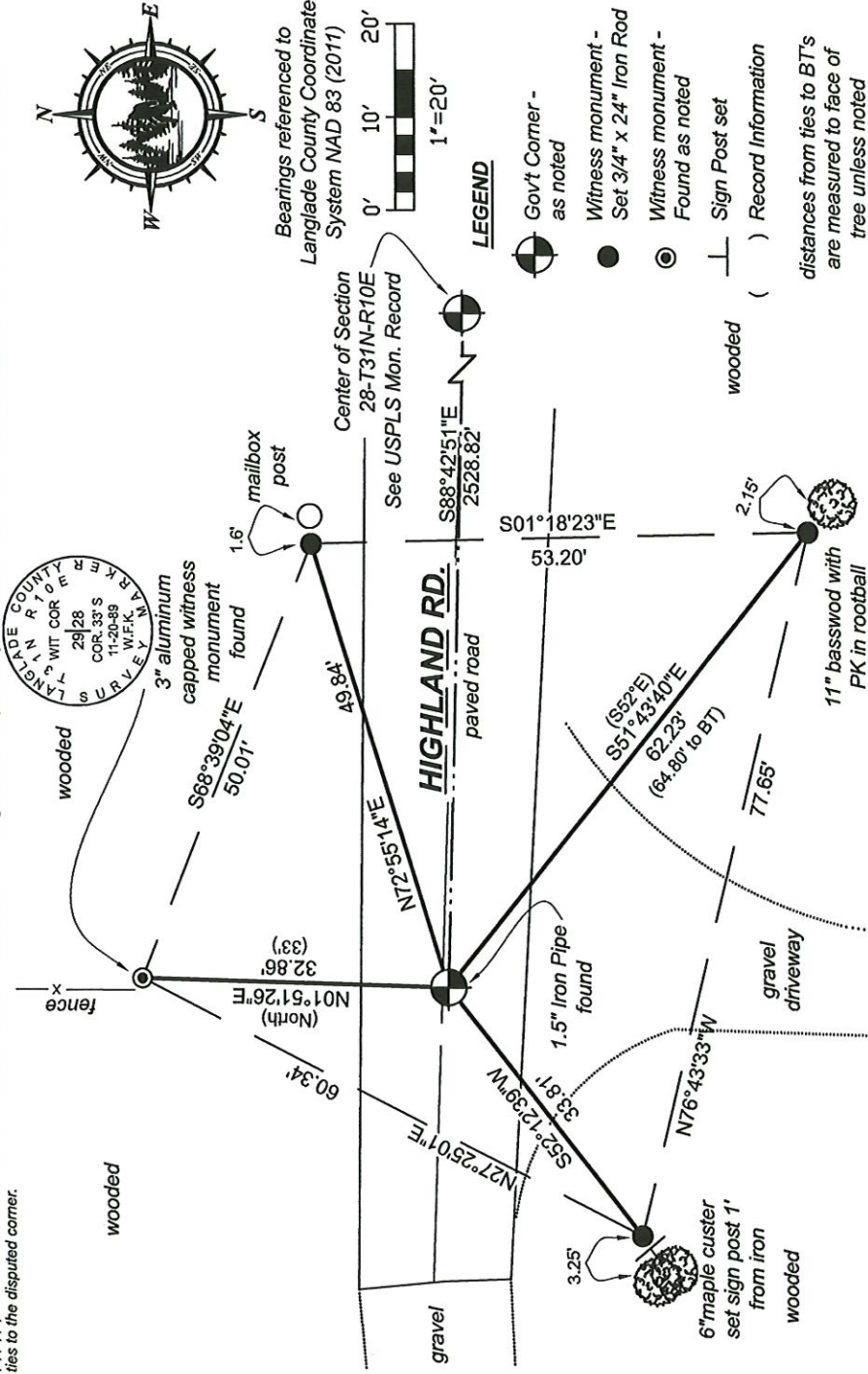
2023 Sep. – Chad A. Besaw found and accepted a 1.5" Iron Pipe down 8". Found N and SE ties from previous tie sheet (S21°E BT had no description), re-witnessed as shown below.

(i) I, Chad A. Besaw, Wisconsin Professional Land Surveyor #S3029, hereby certify that the corner location on this record was determined by me and that this U.S. Public Land Survey Monument Record is correct and complete to the best of my knowledge and belief.

Chad A. Besaw
10/18/2023
Date



(c)(d)(e) Plan view of corner with ties to at least 4 witness monuments. If in disagreement with previously established corner, show the distances between the two corners and also indicate the ties to the disputed corner.



T9 31-10

43110292000

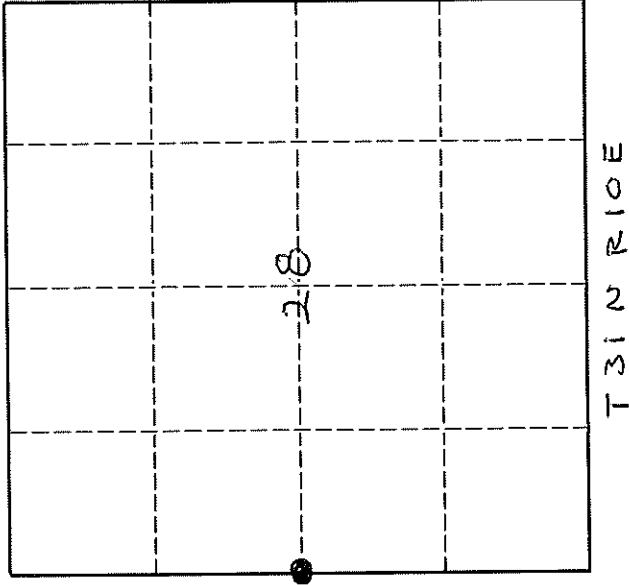
U. S. PUBLIC LAND SURVEY MONUMENT RECORD

INSTRUCTIONS:

This record shall show the location of the corner and shall include all of the following nine elements (a through i).

- (a) Identify the corner by reference to the U.S. public land survey system.
O = Corner monument restored.

ORIGINAL CORNER EST.
BY M.C. FELLOWS IN 1860

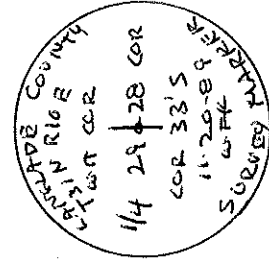


T31N R10E

- (b) Describe any record evidence, monument evidence, occupational evidence, testimonial evidence or any other material evidence you considered, and whether the monument was found or placed.

LOCATED 1 1/4" IRON BAR 3" BELOW SURFACE OF ROAD.
SET NAIL IN ROAD OVER IRON BAR
SET WITNESS MONUMENT (3' ALUM)

- (c) In the plan view drawing below, provide reference ties to at least 4 witness monuments, or, if the location is within a municipality, to at least 2 witness monuments. (Witness monuments shall be made of concrete, natural stone, iron or other equally durable material.)
Describe witness monuments.



1 1/4" MAPLE



3' ALUM W.C.



33.0'

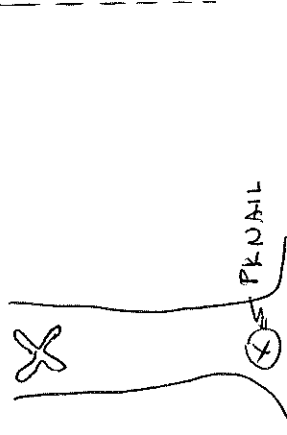
N 14° 08' 18" W
64.80'

HIGHLAND ROAD

S 21° E
67.80'

S 52° E
64.80'

4" BASS WOOD



PR NAIL

T-9

43110292000

Describe any material discrepancy between the location of the corner as restored or reestablished and the location of that corner as previously restored or reestablished by distance and direction. Show the discrepancy on the plan view drawing under (d), above. Show the distances between the corner as previously restored or reestablished and (1) the corner as restored or reestablished, and (2) to at least 2 of the witness monuments shown on the drawing in (d), above.

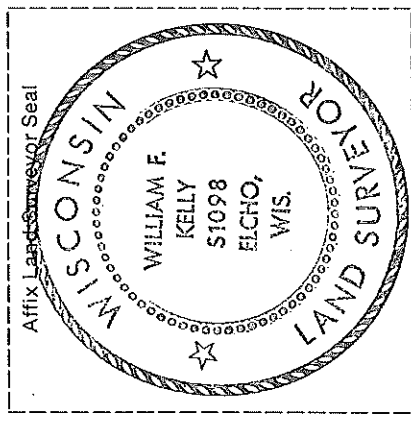
NONE

(f) Was the corner restored through acceptance of (1) an obliterated evidence location, or, (2) a found perpetuated location.?

- 2 -

(g & h) Was the corner reestablished through lost corner proportionate methods? If so, show the method, including the directions and distances to other public land survey corners used as evidence or used for proportioning in determining the corner location.

NONE



(i) I, WILLIAM F. KELLY
(type or print name)

certify that the corner location shown on this record was determined by me or under my direction and control and that this U.S. Public Land Survey Monument Record is correct and complete to the best of my knowledge and belief.

Signature William F. Kelly Date 12-22-89