

# U.S. PUBLIC LAND SURVEY MONUMENT RECORD

(Prepared and as required by S. A-E 7.08 WI Administrative Code)

The SOUTH 1/4 corner of Section 10, T. 31 N., R. 12 E., Langlade County, WI  
Corner was (check all that apply)

- Restored through acceptance of an obliterated evidence location.
- Restored through acceptance of a found perpetuated location.
- Determined to be lost and re-established through proportionate methods. (show bearings and distances to PLSS corners used for proportioning.)
- Restored/recovered/re-established in a location that differs from a previously established position. (Show difference in plan view below.)
- Check here if additional information is shown on the reverse side of this form.

**Describe record evidence, recovered physical evidence, occupational evidence, testimonial evidence, and all other evidence considered in the recovery/restoration of the corner.**

1857 - Original corner established by J. McBride - bearing trees: Birch, 8", S20°W, 24 links; Elm, 12", N8°E, 34 links.

Date unknown - Hutchinson refers to corner as "stone set by myself 1900, new Sugar, 12", S19°E, 38.75 links.

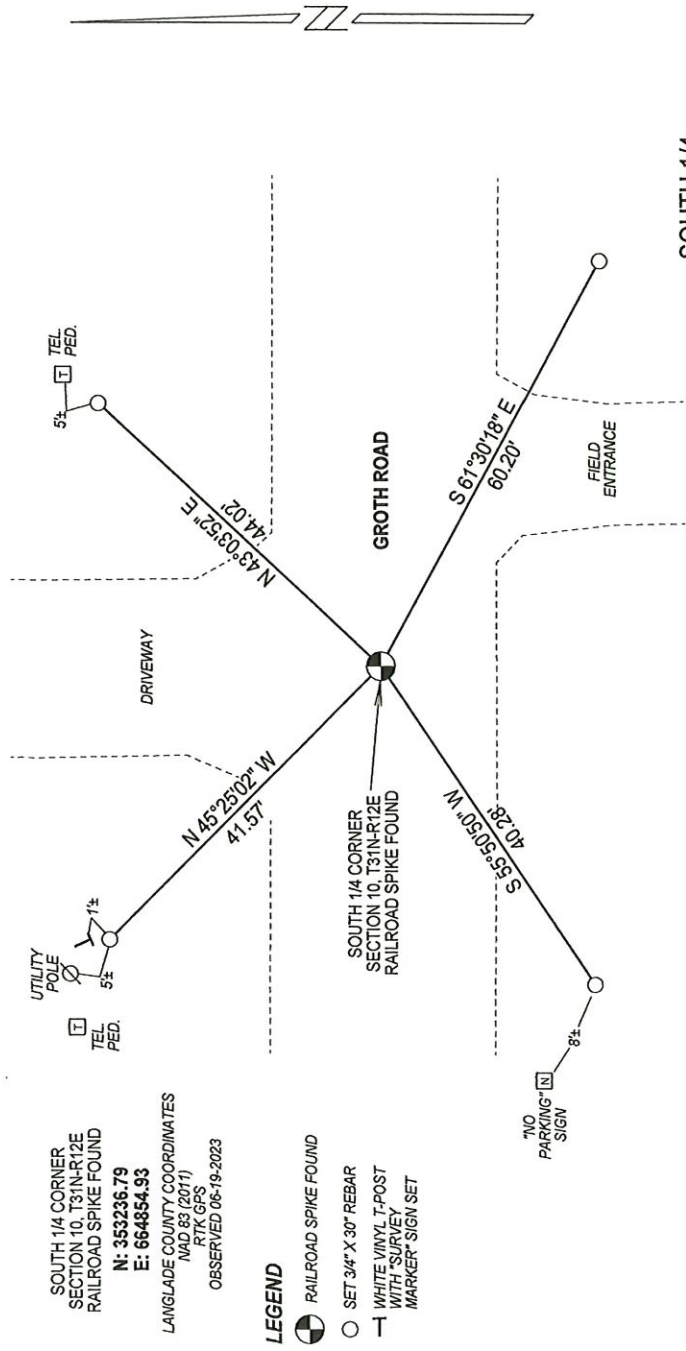
1981 - Tom Amott set corner using "fence line intersection and road centerline as best possible location." Amott set a rail road spike at the corner, made ties, and filed tie sheet.

2023 - I found the existing railroad spike 2" below the road surface in good condition. I verified corner location from existing ties by Amott and made additional ties.

**Physical description of the monument set:**

Accepted railroad spike by Amott as corner location and tied out as shown below.

Describe the accessories used to perpetuate the location of the corner. Include a plan view drawing and indicate accessories found/set. Describe measuring point on bearing trees. Show any topographic features that would aid in future recovery of the corner.



SOUTH 1/4 CORNER SECTION 10, T31N-R12E RAILROAD SPIKE FOUND  
N: 353236.79  
E: 664854.93  
LANGLADE COUNTY COORDINATES  
NAD 83 (2011)  
RTK GPS  
OBSERVED 06-19-2023

**LEGEND**

- RAILROAD SPIKE FOUND
- SET 3/4" X 30" REBAR
- WHITE VINYL T-POST WITH "SURVEY MARKER" SIGN SET

The SOUTH 1/4  
Corner of Section 10  
T. 31 N., R. 12 E.  
Langlade County, WI

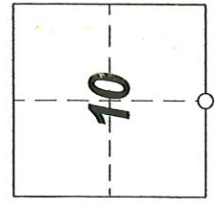
NOTES  
- SKETCH NOT DRAWN TO SCALE.  
- THE BEARINGS SHOWN ARE LANGLADE COUNTY GRID BEARINGS.  
- ALL TIES MEASURED ELECTRONICALLY WITH TOTAL STATION.

SURVEYORS SEAL



I, Michael J. Hoffman certify that the corner location shown on this record was determined by me or under my direction and control and that this U.S. Public Land Survey Monument Record is correct and complete to the best of my knowledge and belief.

Michael J. Hoffman 09/01/2023  
Signature Date



○ = Location of corner

CERTIFIED LAND CORNER RESTORATION

Index No. J-15

State of Wisconsin }  
 County of Langlade } ss.

I Thomas R. Arnott, do hereby certify that on the 25 day of July, 1988, I found evidence of the 1/4 corner of sections 10 and 15 Township 31, North, Range 12 E, Fourth Principal Meridian, as described hereon; and that from this evidence I established a new monument and accessories as described hereon to perpetuate the original location of this corner.

History of original corner establishment:  
 Orig. by James McBride  
 Nov. 21 thru Dec. 1, 1857

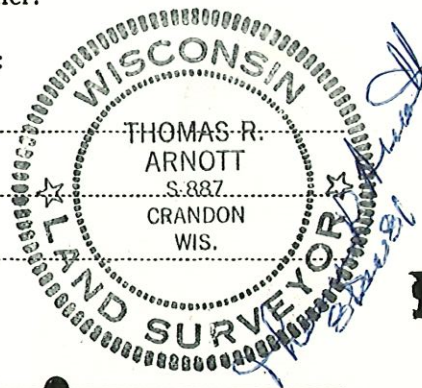
Birch 8 S20W 24  
 Elm 12 N8E 31

Description of corner evidence found:

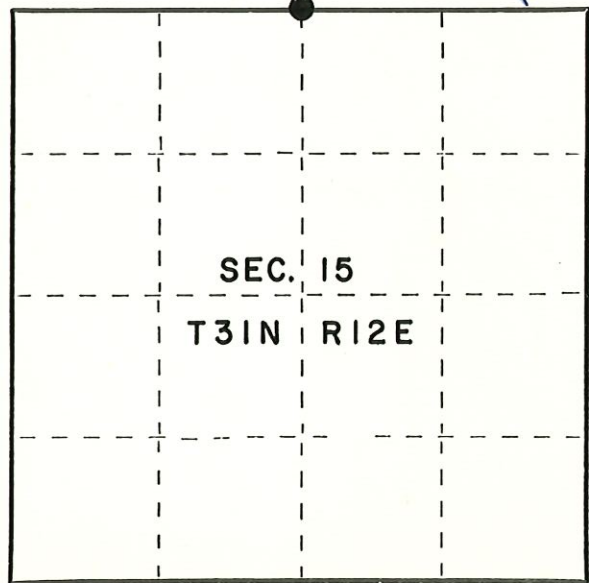
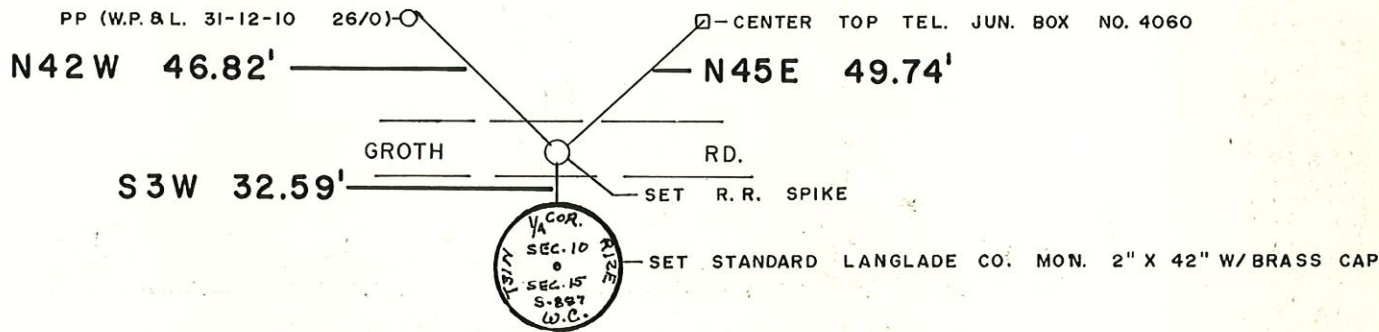
No evidence found.  
 Used fence line intersection and road centerline as best possible location.

Resident witnesses:

.....  
 .....  
 .....  
 .....



Description of monument and accessories I established to perpetuate the original location of this corner.



Dated at Crandon, Wis., this 8th day of December, 1981.

Signature Thomas R. Arnott Title Surveyor Registration No. S-887  
 (County Surveyor, Registered Land Surveyor, or other duly authorized official)

Office of Register of Deeds, County of Langlade, I hereby certify that the within instrument was filed in this office for record on the \_\_\_\_\_ day of \_\_\_\_\_, 19\_\_\_\_ at \_\_\_\_\_ o'clock \_\_\_\_\_ M.

.....  
 (Register of Deeds)

By..... Deputy

○ = Corner monument restored.

FORM 985 M. C. MILLER CO., MILWAUKEE