

U.S. PUBLIC LAND SURVEY MONUMENT RECORD

(Prepared and as required by S. A-E 7.08 WI Administrative Code)

The EAST 1/4 corner of Section 16, T. 31 N., R. 12 E., Langlade County, WI
 Corner was (check all that apply)

- Restored through acceptance of an obliterated evidence location.
- Restored through acceptance of a found perpetuated location.
- Determined to be lost and re-established through proportionate methods. (show bearings and distances to PLSS corners used for proportioning.)
- Restored/recovered/re-established in a location that differs from a previously established position. (Show difference in plan view below.)
- Check here if additional information is shown on the reverse side of this form.

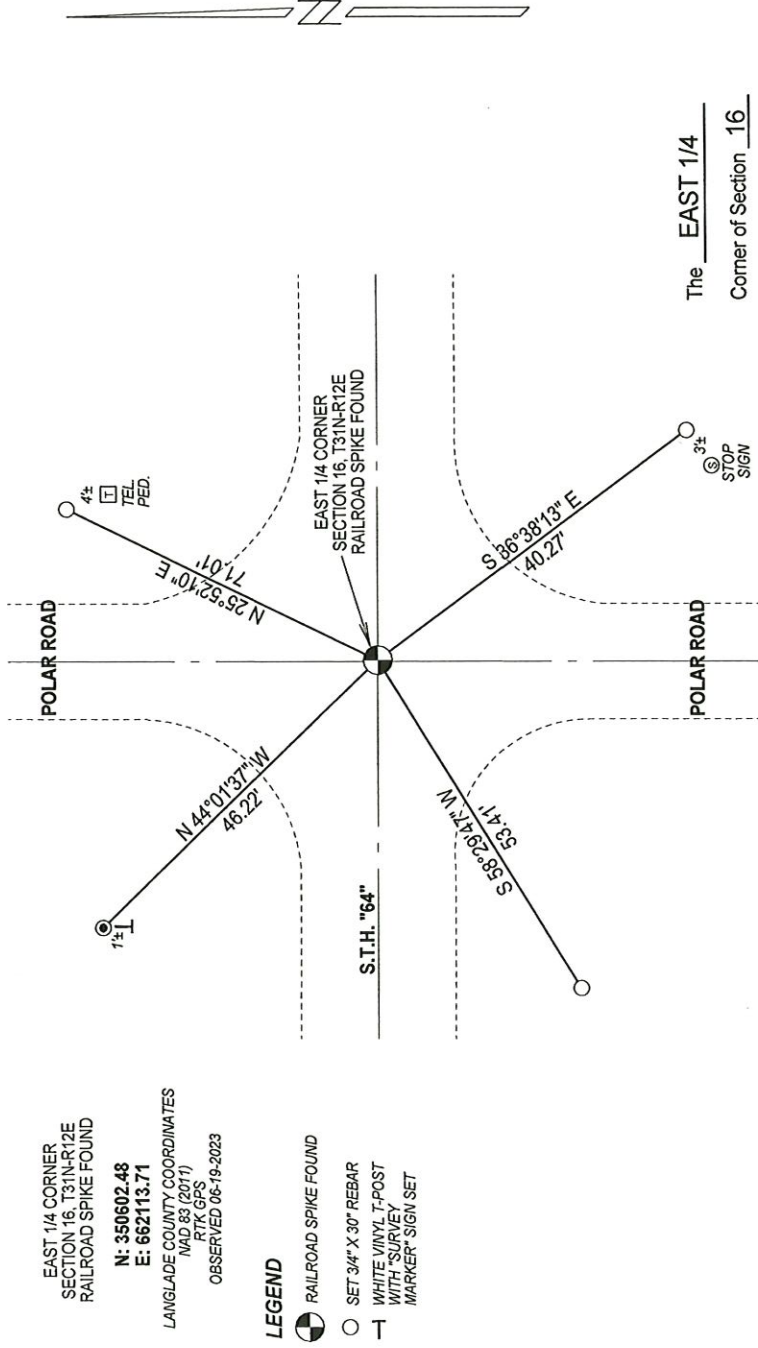
Describe record evidence, recovered physical evidence, occupational evidence, testimonial evidence, and all other evidence considered in the recovery/restoration of the corner.

- 1857 - Original corner established by J. McBride - bearing trees: Sugar, 8", S36°E, 8 links; Sugar, 8", N41°W, 10 links.
- 1981 - Thomas Arnott "found railroad spike in center of intersection of S.T.H. "64" and Polar Road." Arnott set ties and filed a tie sheet.
- 1983 - William Kelly found a railroad spike "in place checked with survey records as location of 1/4 corner." Kelly set ties and filed a tie sheet.
- 2023 - I found the railroad spike called for previously at corner location. Corner falls at the intersection of S.T.H. "64" and Polar Road.

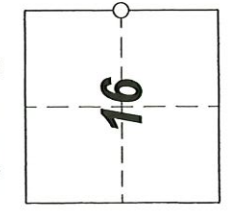
Physical description of the monument set:

Accepted railroad spike as corner location and tied out as shown below.

Describe the accessories used to perpetuate the location of the corner. Include a plan view drawing and indicate accessories found/set. Describe measuring point on bearing trees. Show any topographic features that would aid in future recovery of the corner.



The EAST 1/4
 Corner of Section 16
 T. 31 N., R. 12 E.
 Langlade County, WI



INDEX No. **L - 13** 4311216 2000

SURVEYORS SEAL



NOTES
 - SKETCH NOT DRAWN TO SCALE.
 - TIE BEARINGS SHOWN ARE LANGLADE COUNTY GRID BEARINGS.
 - ALL TIES MEASURED ELECTRONICALLY WITH TOTAL STATION.

I, Michael J. Hoffman, certify that the corner location shown on this record was determined by me or under my direction and control and that this U.S. Public Land Survey Monument Record is correct and complete to the best of my knowledge and belief.

Michael J. Hoffman 09-12-2023
 Signature Date

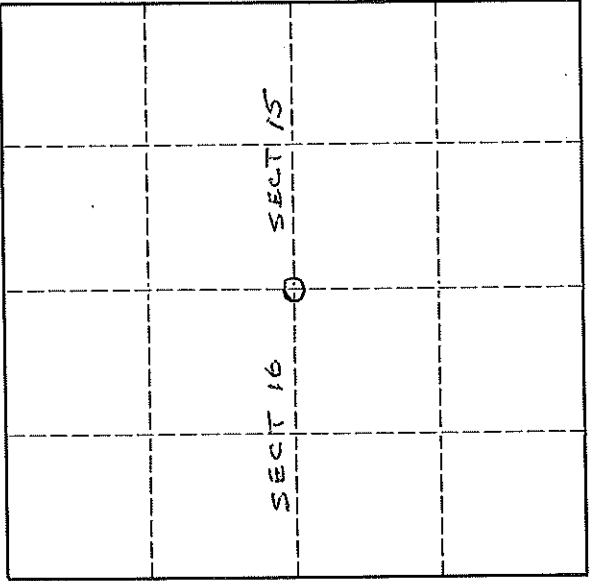
○ = Location of corner

U. S. PUBLIC LAND SURVEY MONUMENT RECORD

INSTRUCTIONS:

This record shall show the location of the corner and shall include all of the following nine elements (a through i).

- (a) Identify the corner by reference to the U.S. public land survey system.
- O = Corner monument restored.



T 31 N - R 12 E

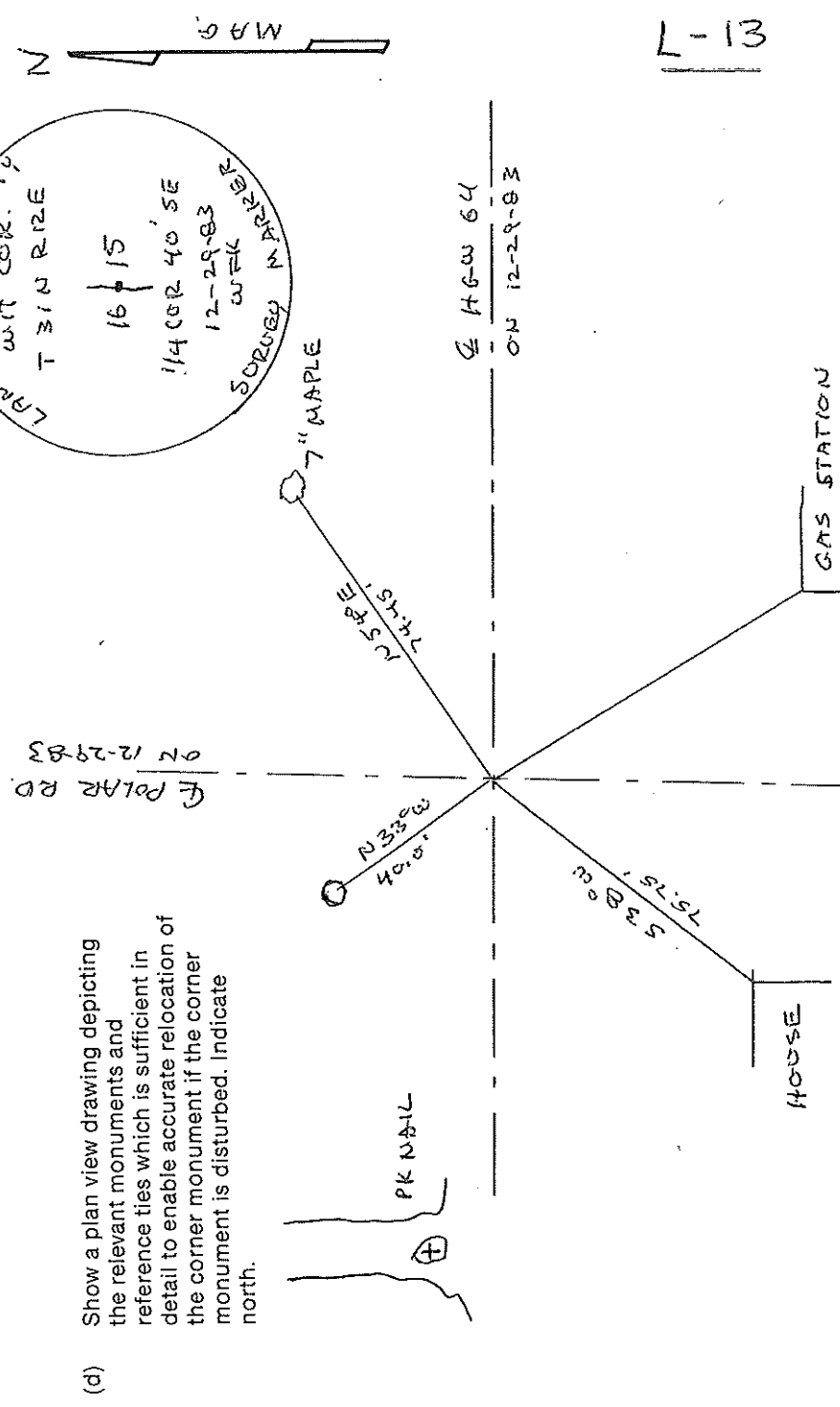
ORIGINAL CORNER ESTABLISHED BY JAMES MC BRIDE IN NOV - DEC 1857

CORNER PERPETUATED FROM OCCUPIED EVIDENCE AND OLD SURVEY INFORMATION IN VILLAGE OF POLAR

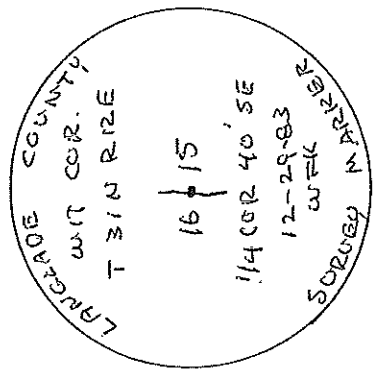
- (b) Describe any record evidence, monument evidence, occupational evidence, testimonial evidence or any other material evidence you considered, and whether the monument was found or placed.

RAILROAD SPIKE FOUND IN PLACE CHECKED WITH SURVEY RECORDS AS LOCATION OF 1/4 CORNER.

- (c) In the plan view drawing below, provide reference ties to at least 4 witness monuments, or, if the location is within a municipality, to at least 2 witness monuments. (Witness monuments shall be made of concrete, natural stone, iron or other equally durable material.) Describe witness monuments.



- (d) Show a plan view drawing depicting the relevant monuments and reference ties which is sufficient in detail to enable accurate relocation of the corner monument if the corner monument is disturbed. Indicate north.



Describe any material discrepancy between the location of the corner as restored or reestablished and the location of that corner as previously restored or reestablished by distance and direction. Show the discrepancy on the plan view drawing under (d), above. Show the distances between the corner as previously restored or reestablished and (1) the corner as restored or reestablished, and (2) to at least 2 of the witness monuments shown on the drawing in (d), above.

NO

(f) Was the corner restored through acceptance of (1) an obliterated evidence location, or, (2) a found perpetuated location.?

(i)

(g & h) Was the corner reestablished through lost corner proportionate methods? If so, show the method, including the directions and distances to other public land survey corners used as evidence or used for proportioning in determining the corner location.

NO

(i) I, WILLIAM F. KELLY

(type or print name)

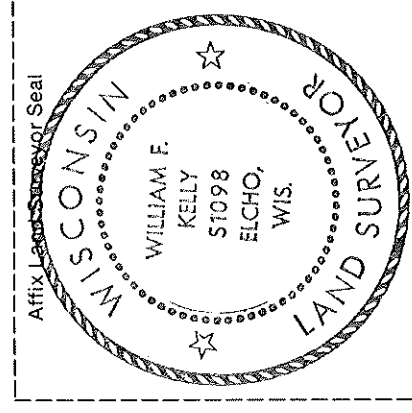
certify that the corner location shown on this record was determined by me or under my direction and control and that this U.S. Public Land Survey Monument Record is correct and complete to the best of my knowledge and belief.

William F. Kelly

Signature

6-9-88

Date



CERTIFIED LAND CORNER RESTORATION

Index No. L-13

State of Wisconsin }
County of Langlade } ss.

History of original corner establishment:

I, Thomas R. Arnott, do hereby certify that on the 25 day of July, 1978, I found evidence of the 1/4 corner of sections 15 and 16 Township 31, North, Range 12 E, Fourth Principal Meridian, as described hereon; and that from this evidence I established a new monument and accessories as described hereon to perpetuate the original location of this corner.

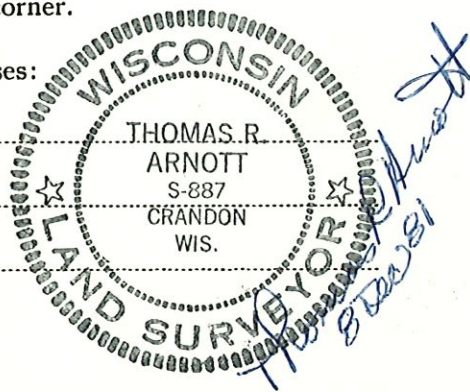
Orig. by James McBride
Nov. 21 thru Dec. 1, 1857

Birch 20 S62W 40
Lind 18 S32E 27

Description of corner evidence found:

Found R.R. spike in center of intersection of S.T.H. "64" and Polar Road

Resident witnesses:

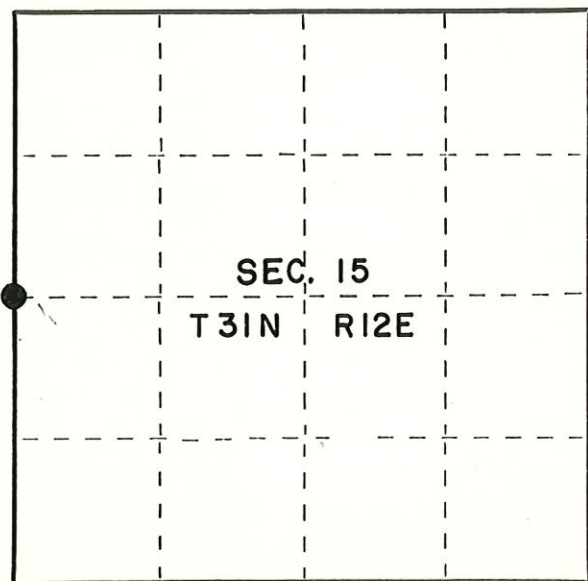


Description of monument and accessories I established to perpetuate the original location of this corner.

Left R.R. spike as found.

Ties:

Power Pole WP&L 31-12-16 53/26 P.K. in NE side N38W 40.10 feet
Telephone Pole #1242 P.K. SE side N30E 66.78 feet
Northeast fuel filler cap (center) S39E 40.66 feet
NW corner concrete block building S30E 76.97 feet
Telephone pole #376 S78W 110.70 feet



○ = Corner monument restored.

Dated at Crandon, Wis., this 8th day of December, 1981

Signature Thomas R. Arnott Title Surveyor Registration No. S-887
(County Surveyor, Registered Land Surveyor, or other duly authorized official)

Office of Register of Deeds, County of Langlade, I hereby certify that the within instrument was filed in this office for record on the _____ day of _____, 19____ at _____ o'clock _____ M.

(Register of Deeds)

By _____ Deputy

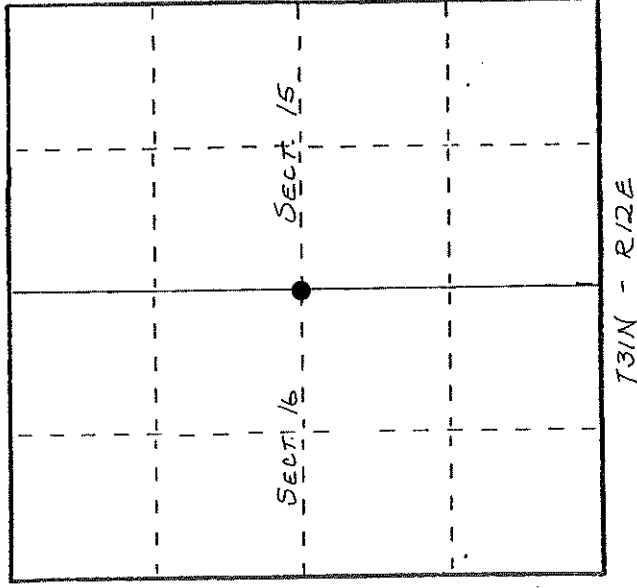
FORM 985 M. C. MILLER CO., MILWAUKEE

U. S. PUBLIC LAND SURVEY MONUMENT RECORD

I N S T R U C T I O N S : This record shall show the location of the corner and shall include all of the following nine elements (a through i).

- (a) Identify the corner by reference to the U.S. public land survey system.
- = Corner monument restored.

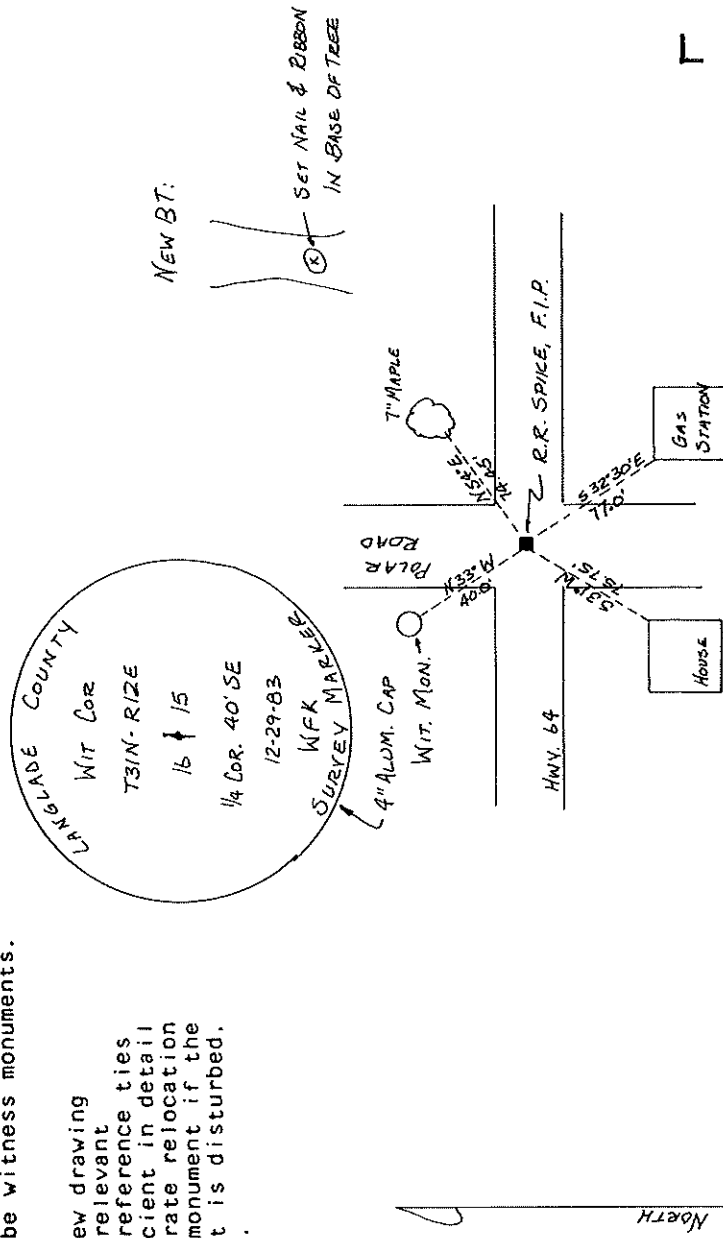
*ORIGINAL CORNER ESTABLISHED
By JAMES McBRIDE IN NOV-DEC., 1857.*



- (b) Describe any record evidence, monument evidence, monument evidence, occupational evidence, testimonial evidence, or any other material evidence you considered, and whether the monument was found or placed.

FOUND IN PLACE: R. R. SPIKE AT INTERSECTION OF POLAR ROAD & HWY. 64.

- (c) In the plan view drawing below, provide reference ties to at least 4 witness monuments, or, if the location is within a municipality, to at least 2 witness monuments. (Witness monuments shall be made of concrete, natural stone, iron or other equally durable material.) Describe witness monuments.



- (d) Show a plan view drawing depicting the relevant monuments and reference ties which is sufficient in detail to enable accurate relocation of the corner monument if the corner monument is disturbed. Indicate north.

(e) Describe any material discrepancy between the location of the corner as restored or reestablished and the location of that corner as previously restored or reestablished by distance and direction. Show the discrepancy on the plan view drawing under (d), above. Show the distances between the corner as previously restored or reestablished and (1) the corner as restored or reestablished, and (2) to at least 2 of the witness monuments shown on the drawing in (d), above.

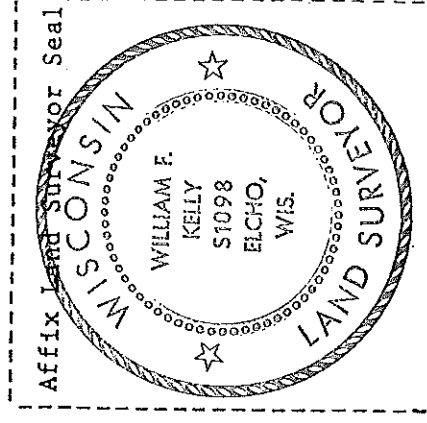
NONE

(f) Was the corner restored through acceptance of (1) an obliterated evidence location, or, (2) a found perpetuated location?

(2)

(g&h) Was the corner reestablished through lost corner proportionate methods? If so, show the method, including the directions and distances to other public land survey corners used as evidence or used for proportioning in determining the corner location?

No



(1) 1. WILLIAM F. KELLY
(Type or print name) certify that the corner location shown on this record was determined by me or under my direction and control and that this U.S. Public Land Survey Monument Record is correct and complete to the best of my knowledge and belief.

William F. Kelly
Signature

12-30-63
Date