

**U.S. PUBLIC LAND SURVEY MONUMENT RECORD**  
**LANGLADE COUNTY**

WI CORNER IDENTIFICATION NO.: 43113300000

COUNTY CORNER NO.: V-5

Monument Type: 2.50" IRON PIPE WITH ALUMINUM CAP

County Coordinate: N 337441.860, E 683184.427

Date of Survey: 8/12/2024 Datum: NAD83(2011)

Survey Party: K. SCHUMACHER

Section

		30			

Section 30  
Township 31 N  
Range 13 E  
EVERGREEN  
City, Village, Town

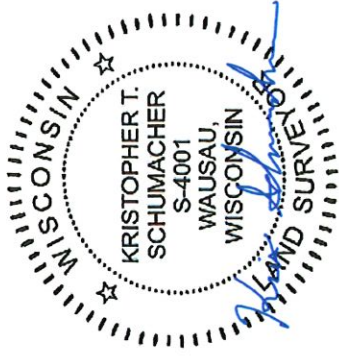
Location  
(indicated by X)

**BASIS FOR MONUMENT LOCATION:**

(Describe method of survey and corner authentication)

1933: M.HUTCHINSON NOTES (BOOK MH 57 FOR T31N, R13E, SEC 30-31) SECTION CORNER WITH WELL POINT SOUTH 50 LINKS.

2024: PLS 4001 FOUND 2.50" IRON PIPE WITH ALUMINUM CAP AND WELL POINT 37.72' SOUTH OF 2.50" IRON PIPE. ACCEPTED 2.50" IRON PIPE AS CORRECT LOCATION, SET 4 NEW TIES AND RE-TIED CORNER.

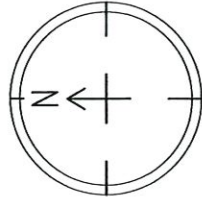


KRISTOPHER T. SCHUMACHER

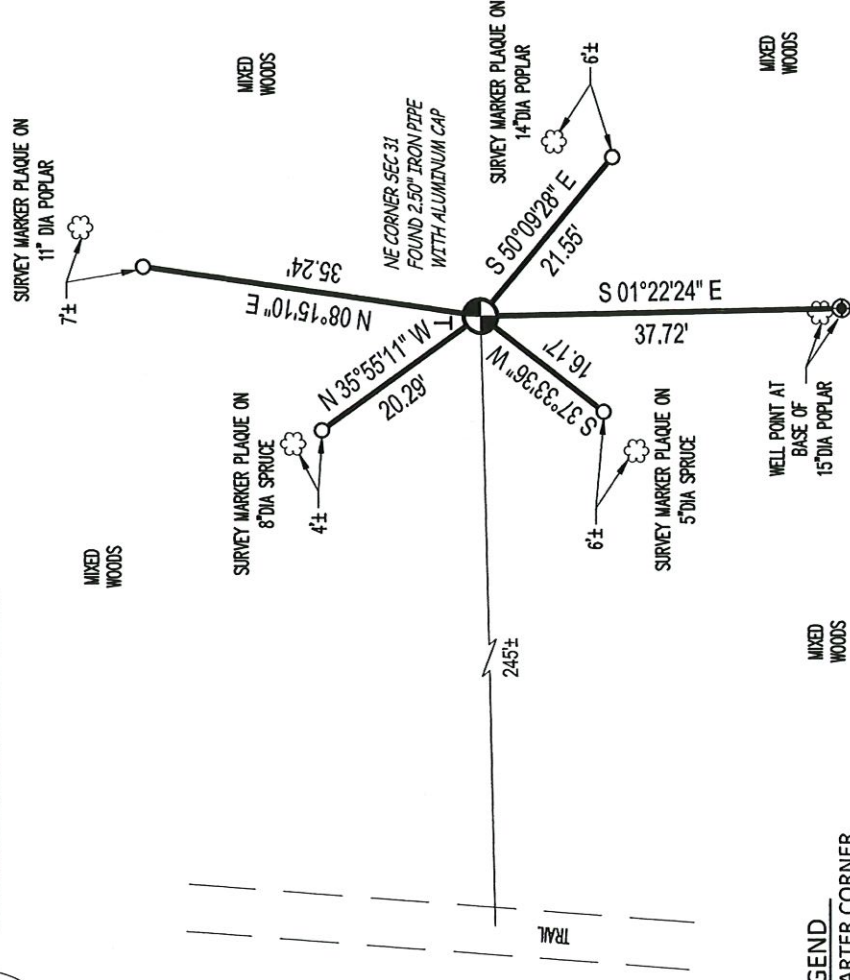
PLS-4001 Date: 8/15/2024

The U.S. Public Land Survey Monument Record is Correct and complete to the best of my knowledge and belief.

**TIE SKETCH:** Show minimum of four (4) horizontal tie distances to fixed witness monuments. Describe all monuments found or set.



Bearings are based on the Langlade County  
Coordinate System NAD83 (2011).



- LEGEND**
- SECTION/QUARTER CORNER
  - 0.75" X 30" IRON BAR SET
  - WEIGHING 1.50 LBS/LIN. FT.
  - EXISTING 1.50" WELL POINT
  - VINYL T-POST