

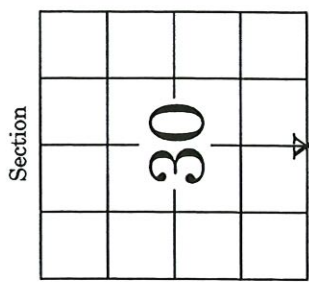
2024

U.S. PUBLIC LAND SURVEY MONUMENT RECORD
LANGLADE COUNTY

WI CORNER IDENTIFICATION NO.: 43113300020

COUNTY CORNER NO.: V-3

Monument Type: 2.50" IRON PIPE WITH BRASS CAP
County Coordinate: N 337450.558, E 680559.348
Date of Survey: 8/12/2024 Datum: NAD83(2011)
Survey Party: K. SCHUMACHER



Section

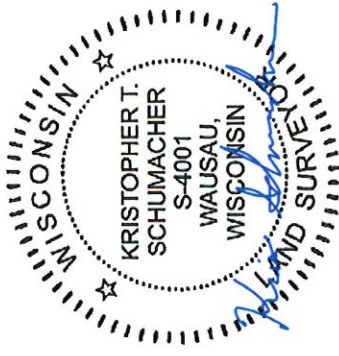
Section 30
Township 31 N
Range 13 E
EVERGREEN
City, Village, Town

BASIS FOR MONUMENT LOCATION:

(Describe method of survey and corner authentication)

1933: M.HUTCHINSON NOTES (BOOK MH 57 FOR T31N, R13E, SEC 30-31) SECTION CORNER WITH WELL POINT SOUTH 50 LINKS.

2024: PLS 4001 FOUND AXLE SHAFT AT CORNER LOCATION AND 1.50" WELL POINT LAYING FLAT ON GROUND SOUTH OF AXLE SHAFT. STRAIGHTENED AXLE SHAFT AT BASE LOCATION. MEASURED DISTANCE FROM AXLE SHAFT TO WELL POINT WAS 35±. ACCEPTED LOCATION OF AXLE SHAFT AS CORNER. REPLACED AXLE SHAFT WITH 2.50" IRON PIPE WITH BRASS CAP, SET 4 NEW TIES AND RE-TIED CORNER.

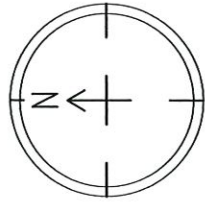


KRISTOPHER T. SCHUMACHER

PLS-4001 Date: 8/15/2024

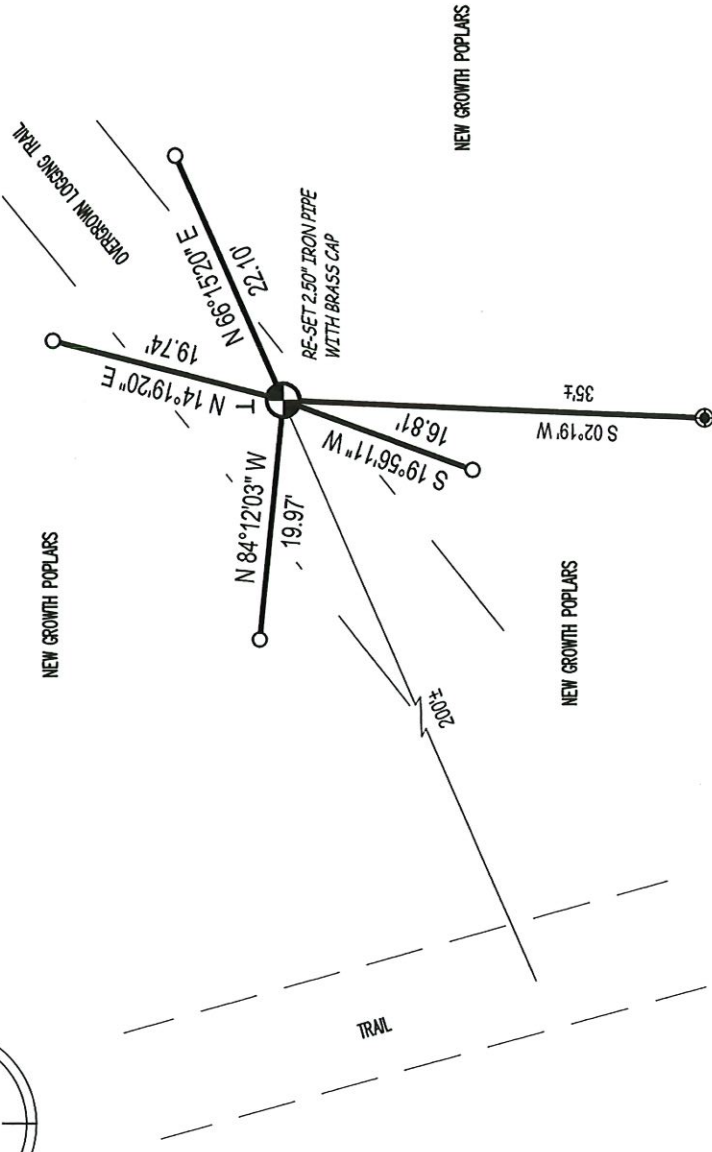
The U.S. Public Land Survey Monument Record is Correct and complete to the best of my knowledge and belief.

TIE SKETCH: Show minimum of four (4) horizontal tie distances to fixed witness monuments. Describe all monuments found or set.



Bearings are based on the Langlade County Coordinate System NAD83 (2011).

NEW GROWTH POPLARS



- LEGEND**
- SECTION/QUARTER CORNER
 - 0.75" X 30" IRON BAR SET WEIGHING 1.50 LBS/LIN. FT.
 - EXISTING 1.50" WELL POINT
 - VINYL T- POST