

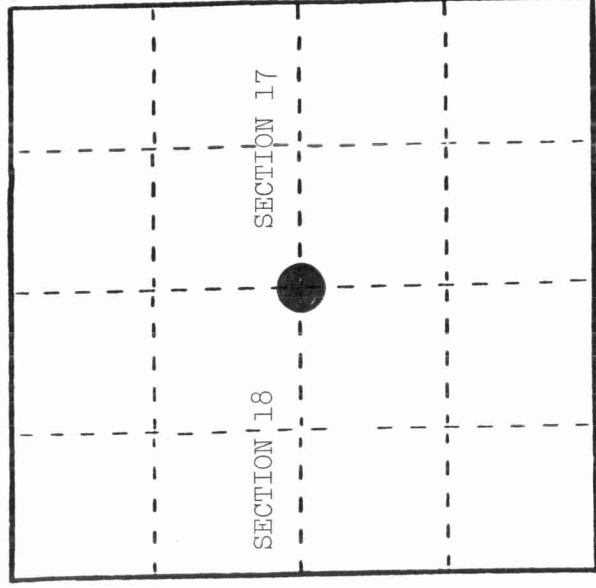
# U. S. PUBLIC LAND SURVEY MONUMENT RECORD

**I N S T R U C T I O N S :**

This record shall show the location of the corner and shall include all of the following nine elements (a through i).

- (a) Identify the corner by reference to the U.S. public land survey system.
- O = Corner monument restored.**

Quarter corner to Sections 17 and 18, T.31N., R.15E.



T 31 N R 15 E

- (b) Describe any record evidence, monument evidence, occupational evidence, testimonial evidence or any other material evidence you considered, and whether the monument was found or placed.

In 1857, James McBride set wood post with the following BTs: Birch, 12", N.37°E., 20 links; Black Oak, 12", S.25°W., 15 links.

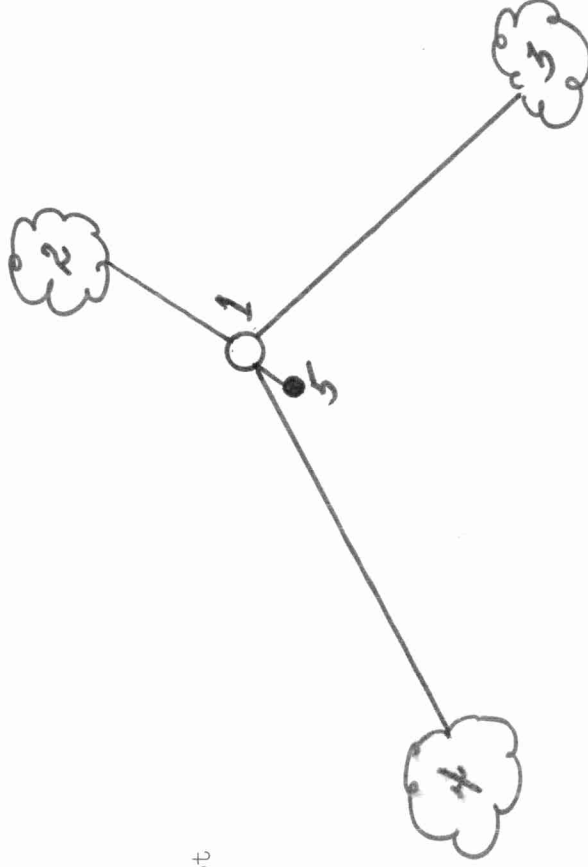
April 14, 1936, Nels Sandberg found a Hemlock stake in fair condition, 4" x 4" x 24". Put a location tag on a Hemlock, 12", from which the corner bears N.50°W., .37 chains.

November 8, 1984, Milo Stefan could find no evidence of original survey or post and tag by Sandberg in 1938.

- (c) In the plan view drawing below, provide reference ties to at least 4 witness monuments, or, if the location is within a municipality, to at least 2 witness monuments. (Witness monuments shall be made of concrete, natural stone, iron or other equally durable material.) Describe witness monuments.

- (d) Show a plan view drawing depicting the relevant monuments and reference ties which is sufficient in detail to enable accurate relocation of the corner monument if the corner monument is disturbed. Indicate north.

1. 2" x 30" aluminum monument stamped to identify the corner.
2. Red Oak, 11", N.30°E., 14.04 feet
3. Sugar, 5", S.46°E., 25.41 feet
4. Red Oak, 10", S.73°W., 57.31 feet
5. Steel Sign Post, Southwest, 1.0 foot



(e) Describe any material discrepancy between the location of the corner as restored or reestablished and the location of that corner as previously restored or reestablished by distance and direction. Show the discrepancy on the plan view drawing under (d), above. Show the distances between the corner as previously restored or reestablished and (1) the corner as restored or reestablished, and (2) to at least 2 of the witness monuments shown on the drawing in (d), above.

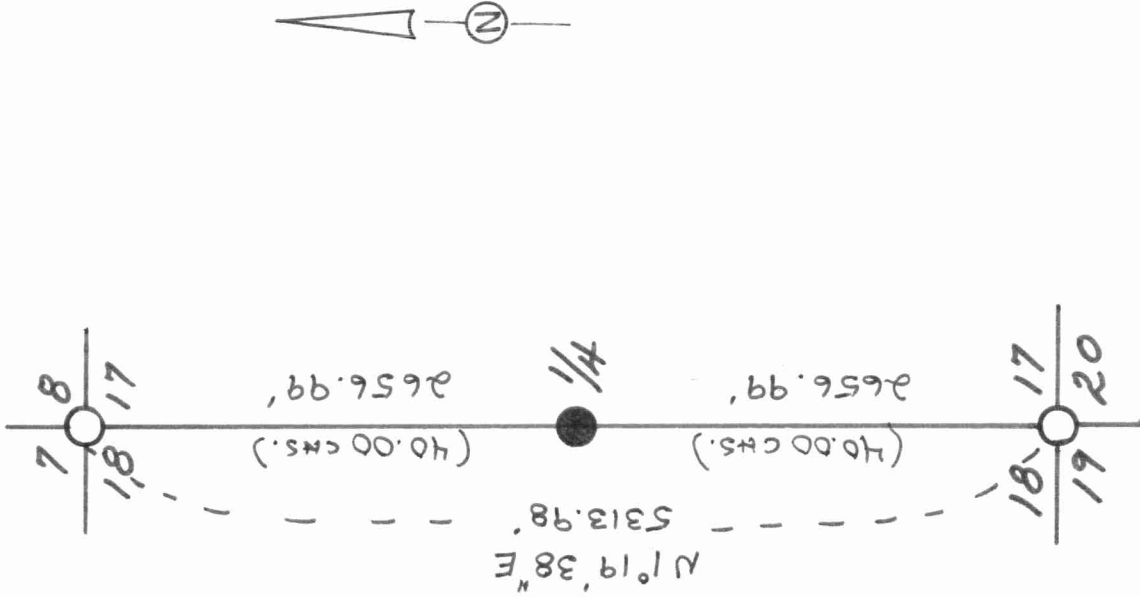
None.

(f) Was the corner restored through acceptance of (1) an obliterated evidence location, or, (2) a found perpetuated location?

No.

(g&h) Was the corner reestablished through lost corner proportionate methods? If so, show the method, including the directions and distances to other public land survey corners used as evidence or used for proportioning in determining the corner location?

Yes. Single proportionate.



CHECKED 6/7/85 M.S. Kelly S 1008

Milo E. Stefan

(1) I, Milo E. Stefan (type or print name) certify that the corner location shown on this record was determined by me or under my direction and control and that this U.S. Public Land Survey Monument Record is correct and complete to the best of my knowledge and belief.

Milo E. Stefan  
Signature

3/10/85  
Date

Affix Land Surveyor Seal

