

CERTIFIED LAND CORNER RESTORATION

Index No. X-5

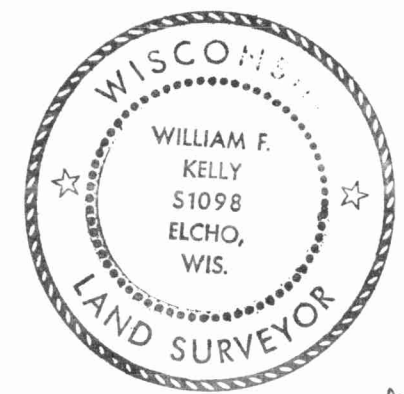
State of Wisconsin }
 County of LANGLADE } ss.

I WILLIAM F. KELLY, do hereby certify that on the 15th day of OCT., 19 81, I found evidence of the N 1/4 corner of SEC. 32 Township 31, North, Range 15 EAST, Fourth Principal Meridian, as described hereon; and that from this evidence I established a new monument and accessories as described hereon to perpetuate the original location of this corner.

Resident witnesses:

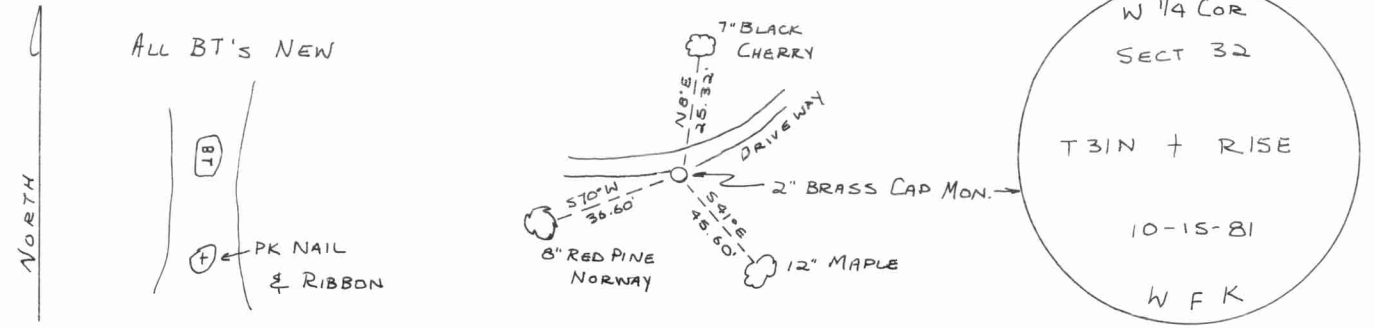
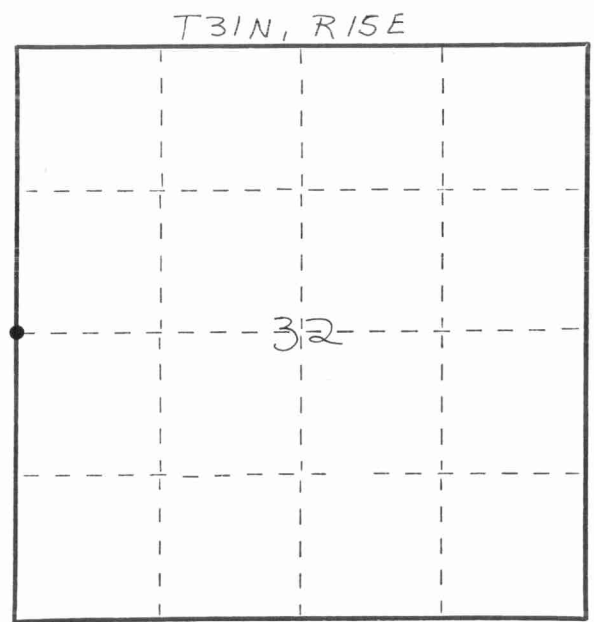
History of original corner establishment:
 ORIGINAL CORNER ESTABLISHED
 BY JAMES MCBRIDE IN SEPT., 1857.

Description of corner evidence found:
 FOUND 4" x 4" WOOD POST. REPLACED
 WITH 2" x 42" BLACK IRON PIPE
 WITH BRASS CAP MONUMENT.



William F. Kelly

Description of monument and accessories I established to perpetuate the original location of this corner.



Dated at ELCHO, Wis., this 15th day of OCT., 19 81.

Signature William F. Kelly Title COUNTY SURVEYOR Registration No. 1098
 (County Surveyor, Registered Land Surveyor, or other duly authorized official)

Office of Register of Deeds, County of _____, I hereby certify that the within instrument was filed in this office for record on the _____ day of _____, 19 _____ at _____ o'clock _____ M.

(Register of Deeds)

By _____ Deputy

○ = Corner monument restored.

FORM 985 H. C. MILLER CO., MILWAUKEE