

U.S. PUBLIC LAND SURVEY MONUMENT RECORD

(Prepared and as required by S. A-E 7.08 WI Administrative Code)

The SOUTHWEST corner of Section 17, T. 32 N., R. 10 E., Langlade County, WI

Corner was: (check all that apply) 321018 0000

- Restored through acceptance of an obliterated evidence location.
- Restored through acceptance of a found perpetuated location.
- Determined to be lost and re-established through proportionate methods.
(Show bearings and distances to PLSS corners used for proportioning.)
- Restored/recovered/reestablished in a location that differs from a previously established position. (Show difference in plan view below.)

Check here if additional information is shown on the reverse side of this form.

Describe record evidence, recovered physical evidence, occupational evidence, testimonial evidence and all other evidence considered in the recovery/restoration of the corner.

The original corner was established in 1860 by Hiram C. Fellows. Original bearing trees: ironwood, 9", S40°E, 40 lks., birch, 12", N54°W, 28 lks. In 1909, Brooks described the corner as a "stone in road". In 1912, Hutchinson surveyed east from here and described this corner as "stone for corner". In 1981, former surveyor Kelly described corner as "rebar with plastic cap found. Set 2" x 42" black iron pipe with brass cap witness monument. Rebar set by W.P.S. on transmission line survey". On 05/26/94 I contacted Bill Kidd at W.P.S. He said any points they set were iron rods set for traverse points and not section corners. 07/30/98 D. Tlusty, D. Williams, M. Kielcheski dug with County backhoe at center of intersection. Found a 0.4' x 1.2' stone with chiseled "X" on top. This was the only stone found. I accepted it as the stone mentioned by Brooks and Hutchinson and as the best evidence of a perpetuated corner location.

Physical description of the monument set:

For the corner, I left the stone as found. I set a 1 1/2" x 23" iron pipe 0.6' south of the "X" on the stone.

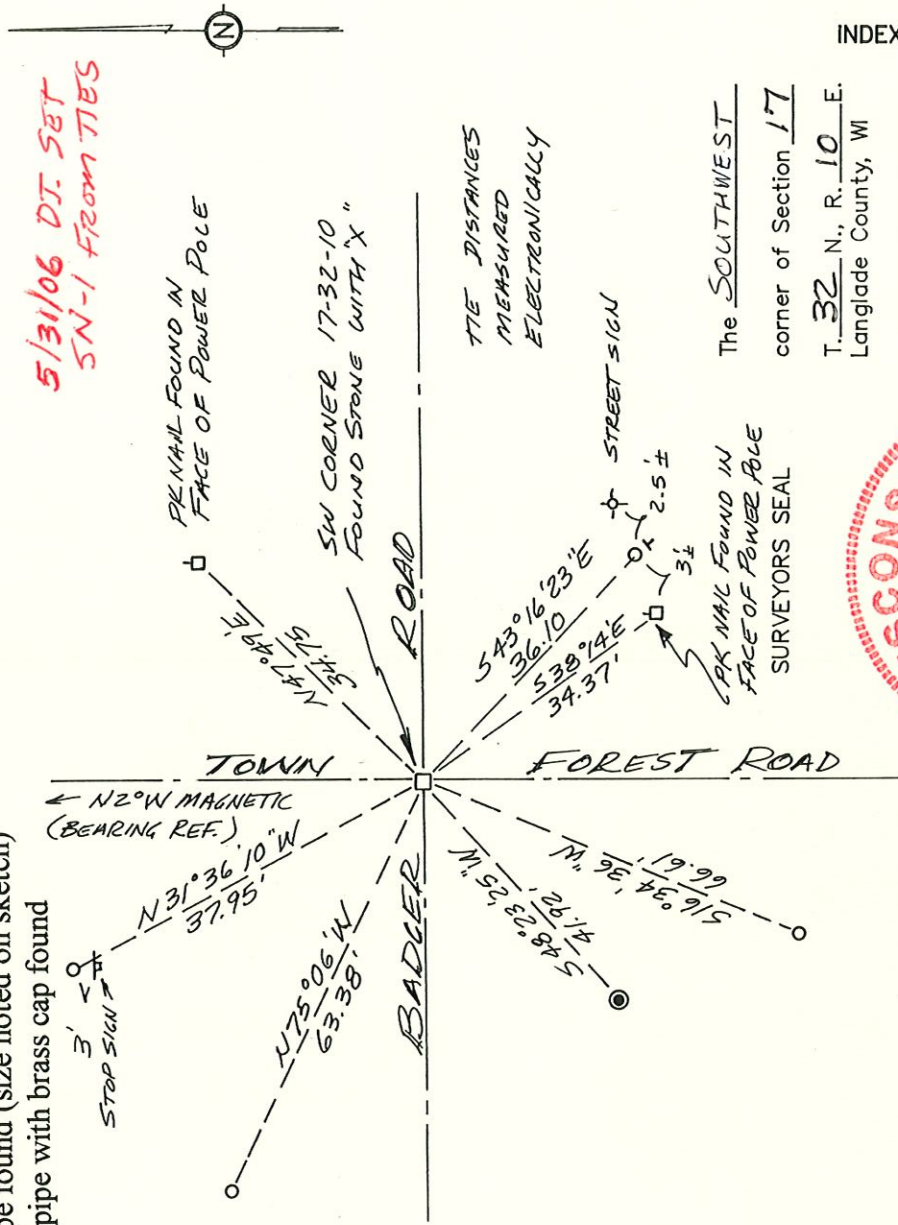
Describe the accessories used to perpetuate the location of the corner. Include a plan view drawing and indicate accessories found/set. Describe measuring point on bearing trees. Show any topographic features that would aid in future recovery of the corner.

- = 3/4" x 30" rebar set flush
- ⊥ = white vinyl sign post with "Survey Marker" sign set
- = iron pipe found (size noted on sketch)
- = 2" iron pipe with brass cap found

FB14-137

FB18-104

5/31/06 DJT SET
SN-1 FROM TIES

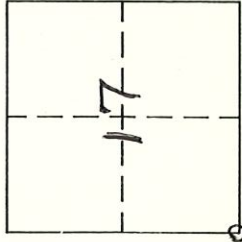


The SOUTHWEST corner of Section 17
T. 32 N., R. 10 E.
Langlade County, WI



I, DAVID E. TLUSTY, LANGLADE COUNTY SURVEYOR, certify that the corner location shown on this record was determined by me or under my direction and control and that this U.S. Public Land Survey Monument Record is correct and complete to the best of my knowledge and belief.

David E. Tlusty 10/8/98
Signature Date



○ = Location of corner

INDEX No. 25

CERTIFIED LAND CORNER RESTORATION

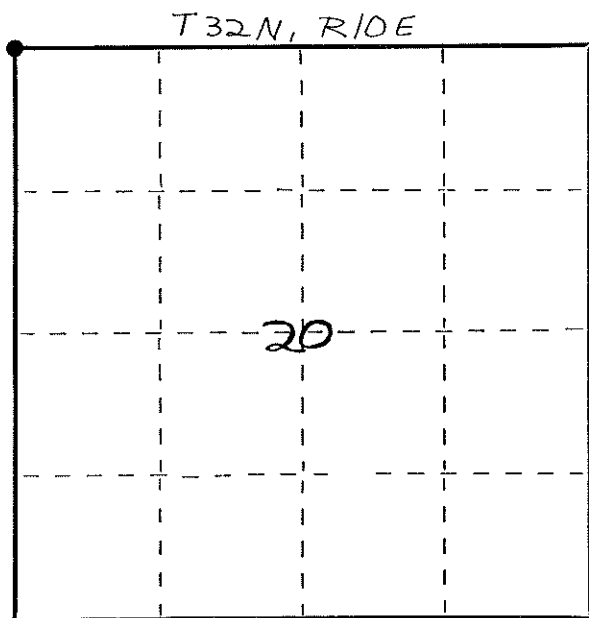
Index No. N-5

State of Wisconsin }
County of LANGLADE } ss.

I WILLIAM F. KELLY, do hereby certify that on the 23RD day of OCTOBER, 1981, I found evidence of the NW corner of SEC. 20 Township 32, North, Range 10 EAST, Fourth Principal Meridian, as described hereon; and that from this evidence I established a new monument and accessories as described hereon to perpetuate the original location of this corner.

Resident witnesses:

.....
.....
.....



○ = Corner monument restored.

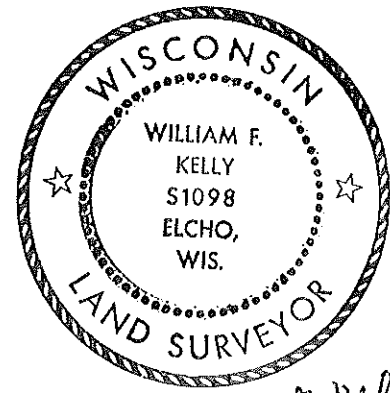
History of original corner establishment:
ORIGINAL CORNER ESTABLISHED
By HIRAM C. FELLOWS IN SEP, 1860

Description of corner evidence found:

REBAR WITH PLASTIC CAP FOUND
IN PLACE. SET 2" x 42" BLACK
IRON PIPE WITH BRASS CAP
W/ MONUMENT.

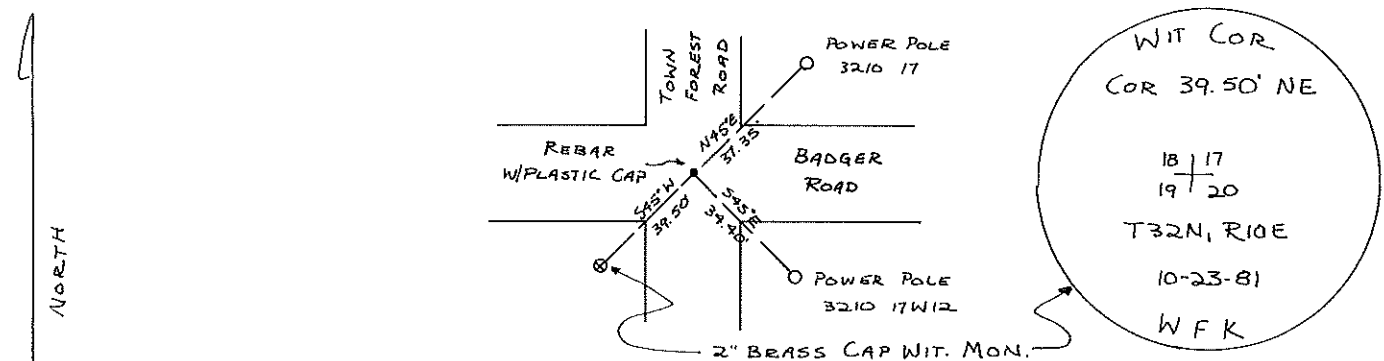
REBAR SET BY W.P.S. ON
TRANSMISSION LINE SURVEY

*5/26/94 D.T.
W.P.S. SAID THAT ALL MARKERS
IT SET WERE ONLY TRAVELER POINTS
& NOT NECESSARILY CORNERS*



William F. Kelly

Description of monument and accessories I established to perpetuate the original location of this corner.



Dated at ELCHO, Wis., this 23RD day of OCTOBER, 1981.

Signature William F. Kelly Title COUNTY SURVEYOR Registration No. 1098
(County Surveyor, Registered Land Surveyor, or other duly authorized official)

Office of Register of Deeds, County of _____, I hereby certify that the within instrument was filed in this office for record on the _____ day of _____, 19____ at _____ o'clock _____ M.

(Register of Deeds)

By _____ Deputy

FORM 985 H. C. MILLER CO., MILWAUKEE