

CERTIFIED LAND CORNER RESTORATION

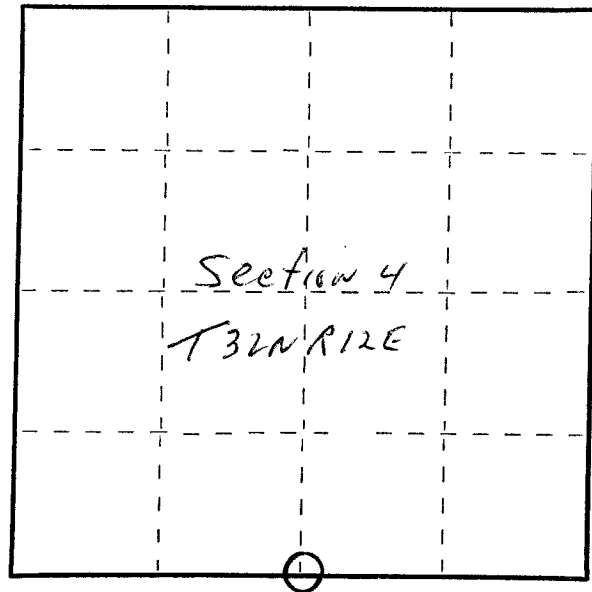
Index No. E-11

State of Wisconsin }  
County of Langlade } ss.

I Raymond J. Hallisy, do hereby certify that on the 5th day of April, 19 80, I found evidence of the 1/4 corner of Section 4 & 9 Township 32, North, Range 12E, Fourth Principal Meridian, as described hereon; and that from this evidence I established a new monument and accessories as described hereon to perpetuate the original location of this corner.

Resident witnesses:

.....  
.....  
.....



○ = Corner monument restored.

History of original corner establishment:

Corner set in the 1930 resurvey.

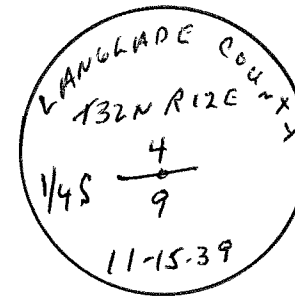
Description of corner evidence found:

1/4 iron pipe with brass cap in - cut over area.

Description of monument and accessories I established to perpetuate the original location of this corner.

New BT's

20" Hemlock S10E 54'  
10" Cherry Stp. N82W 13' 4"



Dated at Antigo, Wis., this 5th day of April, 1980

Signature Raymond J. Hallisy Title Land Surveyor Registration No. S-685  
(County Surveyor, Registered Land Surveyor, or other duly authorized official)

Office of Register of Deeds, County of \_\_\_\_\_, I hereby certify that the within instrument was filed in this office for record on the \_\_\_\_\_ day of \_\_\_\_\_, 19 \_\_\_\_\_ at \_\_\_\_\_ o'clock \_\_\_\_\_ M.

.....  
(Register of Deeds)

By \_\_\_\_\_ Deputy