

CERTIFIED LAND CORNER RESTORATION

32-10
Index No. C-9

State of Wisconsin }
County of LADOGUE } ss.

History of original corner establishment:

NOVEMBER 15, 1939
RESURVEY

I G. McKENNA & G. WEIR, do hereby
certify that on the 30 day
of APRIL, 1963, I found
evidence of the 1/4
corner of SEC 4 & 5
Township 32, North, Range
12, Fourth Principal Meridian,
as described hereon; and that from this evidence
I established a new monument and accessories
as described hereon to perpetuate the original
location of this corner.

Description of corner evidence found:

4" IRON PIPE WITH BRASS CAP W.R. 50 LKS WEST
OF CORNER

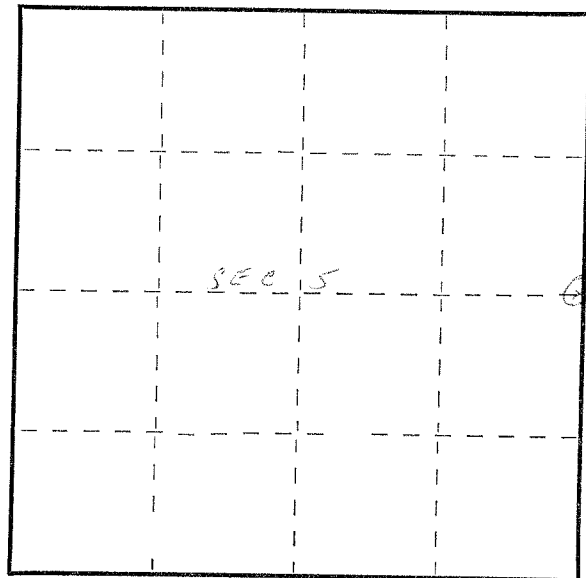
Resident witnesses:

G. McKenna
G. Weir

Description of monument and accessories I established to perpetuate the original location of this corner.

RESET SAME PIPE 100 LKS WEST OF CORNER
AND RESTAMPED

FORM 985 H. C. MILLER CO., MILWAUKEE



○ = Corner monument restored.

Dated at ANTIGO, Wis., this 10th day of MAY, 1963.

Signature [Signature] Title County Clerk Registration No. _____
(County Surveyor, Registered Land Surveyor, or other duly authorized official)

Office of Register of Deeds, County of _____, I hereby certify that the within
instrument was filed in this office for record on the _____ day of _____, 19____
at _____ o'clock _____ M.

(Register of Deeds)

By _____ Deputy