

CERTIFIED LAND CORNER RESTORATION

32-12

Index No. C-9

State of Wisconsin }  
County of Languade } ss.

History of original corner establishment:

Corner reestablished in the Resurvey in the 1930's

I Raymond J. Hallisy, do hereby certify that on the 4th day of May, 1969, I found evidence of the 1/4 corner of Sec. 5 & 4 Township 32, North, Range 12E, Fourth, Principal Meridian, as described hereon; and that from this evidence I established a new monument and accessories as described hereon to perpetuate the original location of this corner.

Description of corner evidence found:

Corner was lying next to a picket set by the Forestry Crew when the road was relocated. This picket was set 100 lks. west of the true corner.

Resident witnesses:

Description of monument and accessories I established to perpetuate the original location of this corner.

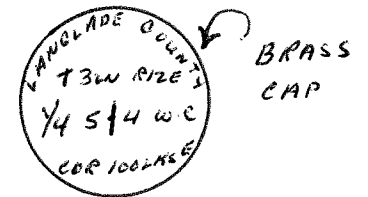
Set 4 inch brass cap with cement 100 lks. west of true corner.

B.T.'s to Witness Corner:

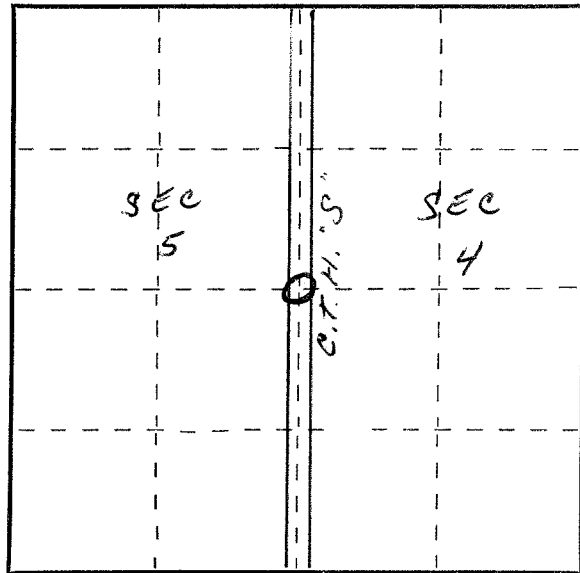
Elm 6" N88W 57 Ft. 6 inches

Elm 9" S84W 68 Ft. 3 inches

B.T.'s faced at base of tree and scribed BT



FORM 985 H. C. MILLER CO., MILWAUKEE



○ = Corner monument restored.

Dated at Antigo, Wis., this 4th day of May, 1969.

Signature: Raymond J. Hallisy Title: Reg. Land Surveyor Registration No. S-685

Office of Register of Deeds, County of \_\_\_\_\_, I hereby certify that the within instrument was filed in this office for record on the \_\_\_\_\_ day of \_\_\_\_\_, 19\_\_\_\_ at \_\_\_\_\_ o'clock \_\_\_\_\_ M.

(Register of Deeds)

By \_\_\_\_\_ Deputy