

CERTIFIED LAND CORNER RESTORATION

Index No. E-5

State of Wisconsin }
County of Langlade } ss.

History of original corner establishment:

Corner set in the 1930 resurvey

I Raymond J. Hallisy, do hereby certify that on the 3rd day of December, 1977, I found evidence of the Section corner of 5, 6, 7, & 8 Township 32, North, Range 12E, Fourth Principal Meridian, as described hereon; and that from this evidence I established a new monument and accessories as described hereon to perpetuate the original location of this corner.

Description of corner evidence found:

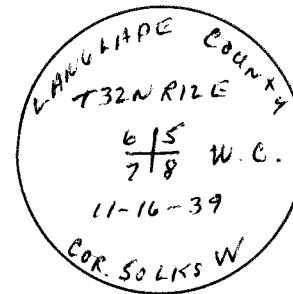
4" iron pipe with brass cap on east side of town road.

Resident witnesses:

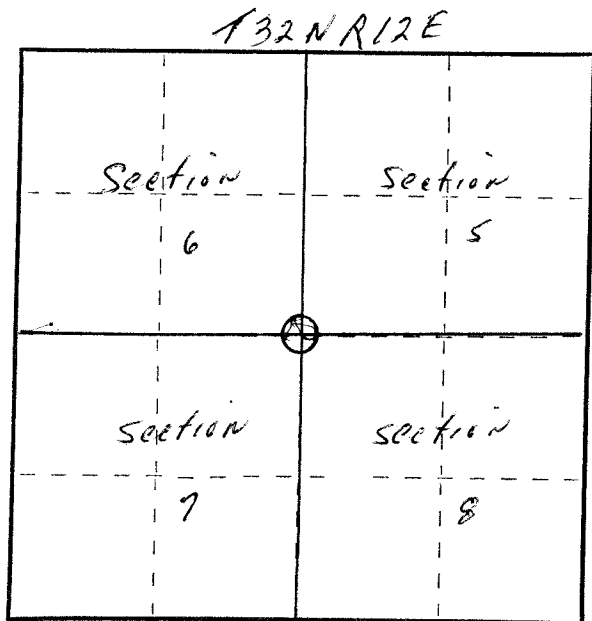
Description of monument and accessories I established to perpetuate the original location of this corner.

New ET's to witness corner

16" Hard Maple S58E 16' 8"
6" Basswood S4E 17' 10"
6" Ironwood N72E 39' 9"



FORM 985 H. C. MILLER CO., MILWAUKEE



○ = Corner monument restored.

Dated at Antigo, Wis., this 3rd day of December, 1977.

Signature Raymond J. Hallisy Title Land Surveyor Registration No. 5685
(County Surveyor, Registered Land Surveyor, or other duly authorized official)

Office of Register of Deeds, County of Langlade, I hereby certify that the within instrument was filed in this office for record on the 11-16-39 day of November, 1977 at 11:15 o'clock AM M.

(Register of Deeds)

By _____ Deputy