

+
LANGLADE COUNTY
U.S. PUBLIC LAND CORNER RESTORATION

The South 1/4 corner of Section 6, T. 32 N., R. 12 E., Langlade County, WI.

Corner was: (check all that apply)

- Restored through acceptance of an obliterated evidence location.
- Restored through acceptance of a found perpetuated location.
- Determined to be lost and re-established through proportionate methods.
- Show bearings and distances to PLSS corners used for proportioning, and show original distances).
- Restored/recovered/re-established in a location that differs from a previously established position.
- (Show difference in plan view below).
- Check here if additional information is shown on the reverse side of this form.

4 321206 0020

Describe record evidence, recovered physical evidence, occupational evidence, testimonial evidence and all other evidence considered in the recovery/restoration of the corner.

The original corner was established in 1857 by James McBride. Original bearing trees: fir, 12", S70E, 10 links and a sugar, 10", N47E, 11 links.

In the 1930's resurvey of part of this township, Hintz and Borth noted: "Set 1/4 by meas. Could not find any trace of the old corner or re-established bearing trees".

5/9/14 D. Tlusty found 4" iron pipe, concrete filled, with brass cap on top. Monument is solid in ground, upright and in good condition. Accepted monument as found as the best evidence of the 1930's perpetuated location of the corner. Measured to references described below.

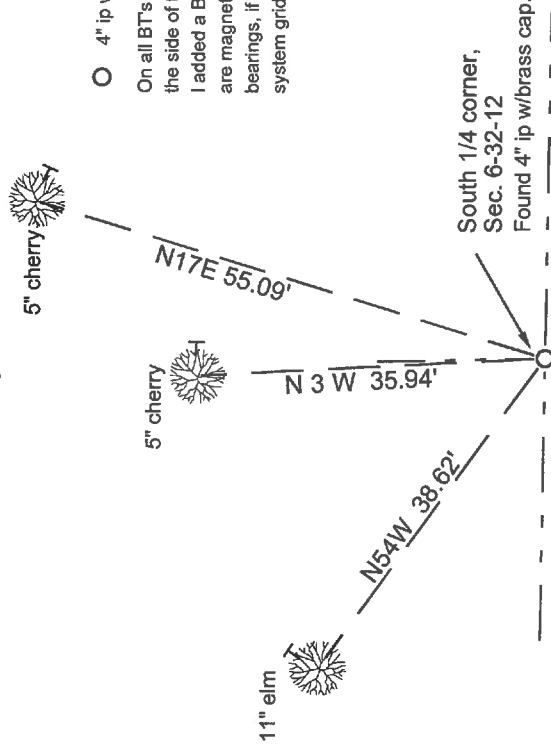
Physical description of the monument set:

I left the existing monument in place, as found. Top of monument is 1 foot above ground.

Set a white vinyl sign post, 1' East of monument.

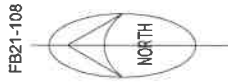
Found 22" face blazed elm, N60W, 3.0' from monument.

Describe the accessories used to perpetuate the corner. Include a plan view drawing and accessories found/set. Describe measuring point on bearing trees. Show any topographic features that would aid in future recovery of the corner.



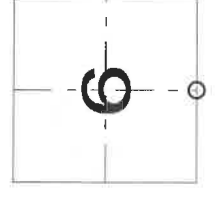
LEGEND

- 4" ip w/brass cap fnd from 1930's re-survey
- On all BT's I set an aluminum nail in a low blaze on the side of the tree shown (T). Trees painted blue.
- I added a Bearing Tree sign to each tree. BT bearings are magnetic with hand compass. Section line bearings, if shown, are Langlade County Coordinate system grid bearings.



Langlade County Coordinates NAD83(2011) datum
 N 390104.62 E 649537.89 4IN BC IP'CONC FND3XRTRKAVE:05092014

Index No. E 3 32-12



= corner perpetuated

South 1/4 corner
 of Section 6,
 T. 32 N., R. 12 E.,
 Langlade County, WI

I, David E. Tlusty, Registered Land Surveyor, as Langlade County Surveyor, certify that the corner location on this record was determined by me and that this U.S. Public Land Survey Monument Record is correct to the best of my knowledge and belief.