

CERTIFIED LAND CORNER RESTORATION

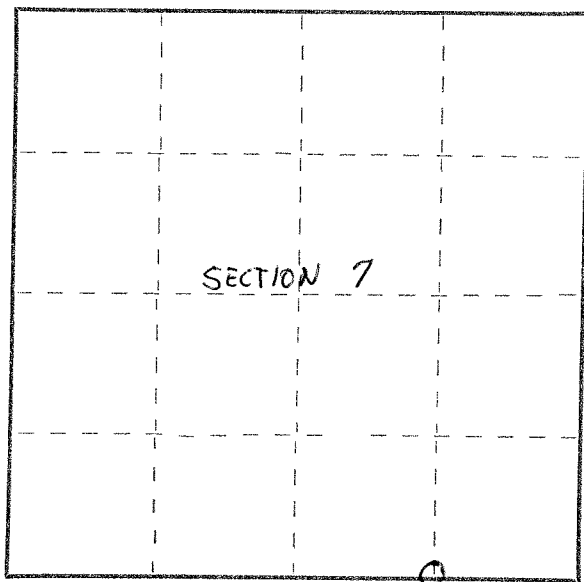
32-12
Index No. J-4

State of Wisconsin }
County of Langlade } ss.

I Raymond J. Hallisy, do hereby certify that on the 22nd day of June, 1968, I found evidence of the E 1/16 corner of Section 7 Township 32, North, Range 12, Fourth, Principal Meridian, as described hereon; and that from this evidence I established a new monument and accessories as described hereon to perpetuate the original location of this corner.

Resident witnesses:

.....
.....
.....



○ = Corner monument restored.

History of original corner establishment:

Corner set in the 1930's by: E. F. Kowalke
C. W. Borth

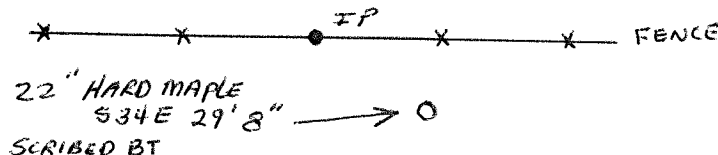
Description of corner evidence found:

Found squared stake standing in fence line.
Marked E 1/16 S7 S18. Fence running east and west.

Description of monument and accessories I established to perpetuate the original location of this corner.

Set Std. 1 1/2" pipe with cap marked E 1/16 7 18. New rock mound.

14" HARD MAPLE N12E 26' → ○
SCRIBED BT



Dated at Antigo, Wis., this 22nd day of June, 1968

Signature Raymond J. Hallisy Title Land Surveyor Registration No. 1685
(County Surveyor, Registered Land Surveyor, or other duly authorized official)

Office of Register of Deeds, County of _____, I hereby certify that the within instrument was filed in this office for record on the _____ day of _____, 19____ at _____ o'clock _____ M.

.....
(Register of Deeds)

By _____ Deputy