

+
**LANGLADE COUNTY
 U.S. PUBLIC LAND CORNER RESTORATION**
 +

The East 1/4 corner of Section 10, T. 32 N., R. 12 E., Langlade County, WI.

Corner was: (check all that apply)

- Restored through acceptance of an obliterated evidence location.
- Restored through acceptance of a found perpetuated location.
- Determined to be lost and re-established through proportionate methods.
- Show bearings and distances to PLSS corners used for proportioning, and show original distances).
- Restored/recovered/re-established in a location that differs from a previously established position.
- (Show difference in plan view below).

4321210 2000 2020

Describe record evidence, recovered physical evidence, occupational evidence, testimonial evidence and all other evidence considered in the recovery/restoration of the corner.

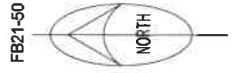
The original corner was established in 1857 by James McBride. Original bearing trees: birch, 24", S25W, 10 links and a hemlock, 16", N66E, 18 links. In the 1930's resurvey of part of this township, Hintz said "to 1/4 cor. Found scribed stake and point of another, but no BT. Marked new BT: pine stump, 12", N15E, 48.7 links". In 1987, Ray Hallisy found 4" iron pipe with brass cap and marked 4 bearing trees. 10/22/2008 D. Tlusty found 4" iron pipe with brass cap up 14" and solid in mound of stones. Remarkd and measured four existing (Hallisy) BT's as shown below.

Physical description of the monument set:

I found the existing monument solid in ground, in mound of stones. Top of monument 14" above ground.
 I set an aluminum nail in the side of 4 existing BT's shown below.

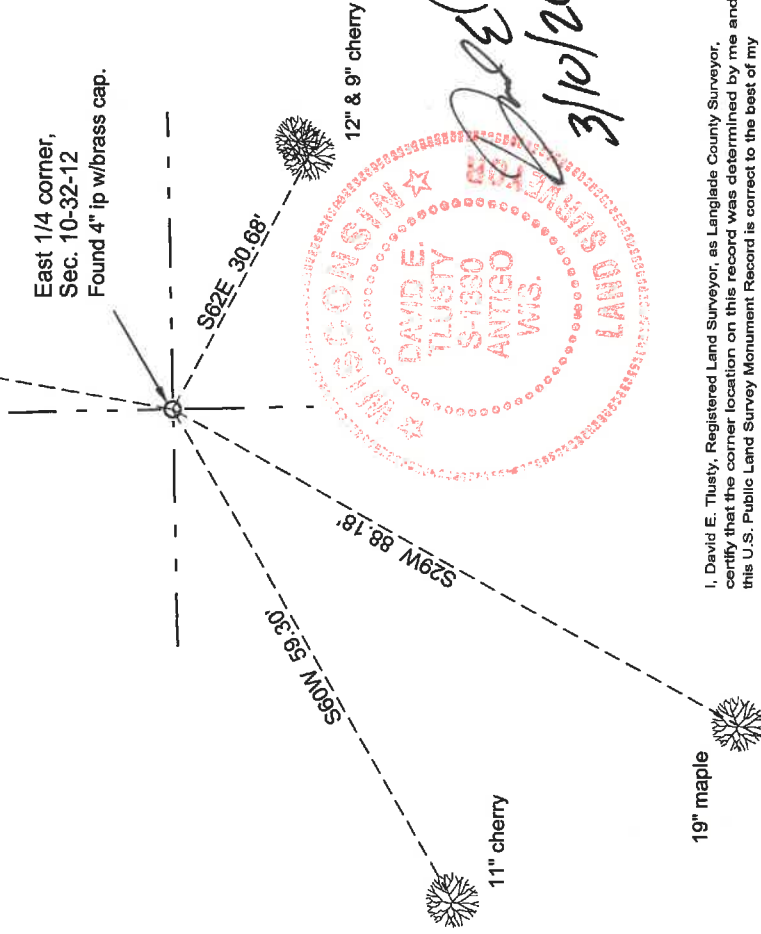
Describe the accessories used to perpetuate the corner. Include a plan view drawing and accessories found/set. Describe measuring point on bearing trees. Show any topographic features that would aid in future recovery of the corner.

LANGLADE COUNTY COORDINATES NAD(83)91
 N 387343.799 E 668054.648

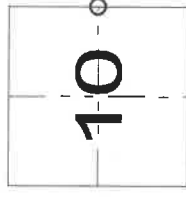


LEGEND

- 4" ip w/brass cap fnd from 1930's re-survey
- On all BT's I set an aluminum nail in a low blaze on the side of the tree. Trees painted blue. I added a Bearing Tree sign to each tree. BT bearings are magnetic with a hand compass.



Index No. G17 32-12



= corner perpetuated

The East 1/4 corner of Section 10,
 T. 32 N., R. 12 E.,
 Langlade County, WI

David E. Tlusty
 3/10/2020

* RESPONSIBILITY *
 DAVID E. TLUSTY
 S-1330
 ANTIGO
 WIS.
 LAND SURVEYOR

I, David E. Tlusty, Registered Land Surveyor, as Langlade County Surveyor, certify that the corner location on this record was determined by me and that this U.S. Public Land Survey Monument Record is correct to the best of my knowledge and belief.

CERTIFIED LAND CORNER RESTORATION

Index No. G-17

State of Wisconsin }
County of Langlade } ss.

History of original corner establishment:

Corner set in 1930 Resurvey

I Raymond Hallisy, do hereby certify that on the 27th day of JUNE, 1987, I found evidence of the 1/4 corner of 10 11 Township 32, North, Range 12E, Fourth Principal Meridian, as described hereon; and that from this evidence I established a new monument and accessories as described hereon to perpetuate the original location of this corner.

Description of corner evidence found:

4" IRON Pipe with BRASS CAP



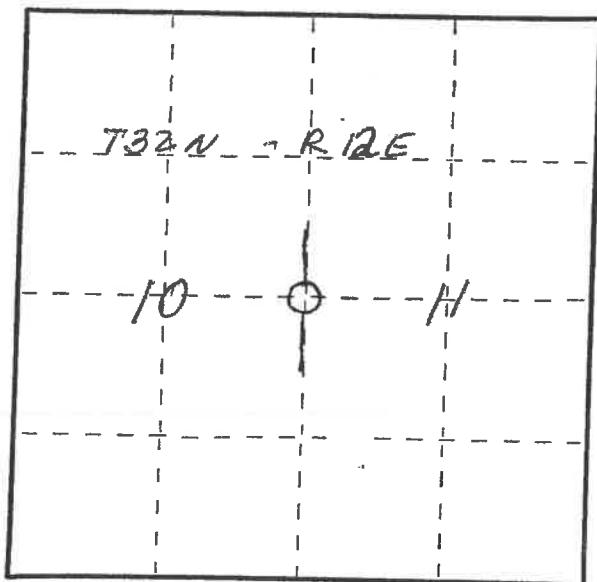
Resident witnesses:

.....
.....
.....

Description of monument and accessories I established to perpetuate the original location of this corner.

New BT, S

- 10" cherry 568°E 30'
- 7" " N6E 44'
- 10" " 536W 58.8'
- 16" Hard Maple 525W 87'



Dated at Antigo, Wis., this 27th day of June, 1987

Signature Raymond Hallisy Title Land Surveyor Registration No. 5-685
(County Surveyor, Registered Land Surveyor, or other duly authorized official)

Office of Register of Deeds, County of....., I hereby certify that the within instrument was filed in this office for record on the.....day of....., 19..... at.....o'clock..... M.

.....
(Register of Deeds)

By.....Deputy

○ = Corner monument restored.