

CERTIFIED LAND CORNER RESTORATION

Index No. H-25

State of Wisconsin }  
County of Lanola } ss.

History of original corner establishment:

1930 Resurvey

I Raymond Hallisy, do hereby certify that on the 27<sup>th</sup> day of April, 1974, I found evidence of the S 1/4 corner of T 3 N R 12 Township 3 2, North, Range 12 E 13 E, Fourth Principal Meridian, as described hereon; and that from this evidence I established a new monument and accessories as described hereon to perpetuate the original location of this corner.

Description of corner evidence found:

12" EIM WITH NAIL N51E 17.21KS  
Described in Field Notes

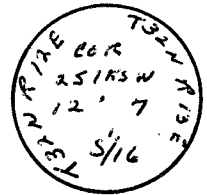
Resident witnesses:

Description of monument and accessories I established to perpetuate the original location of this corner.

Set 1 1/2" pipe with brass cap as witness  
Corner 25 1KS EAST OF TRUE CORNER.

Net BT's To Witness Corner

10" Hard Maple S81E 21.4 1KS  
6" Hard Maple N2W 19.2 1KS  
Rock mound.



Dated at Antigo, Wis., this 27<sup>th</sup> day of April, 1974.

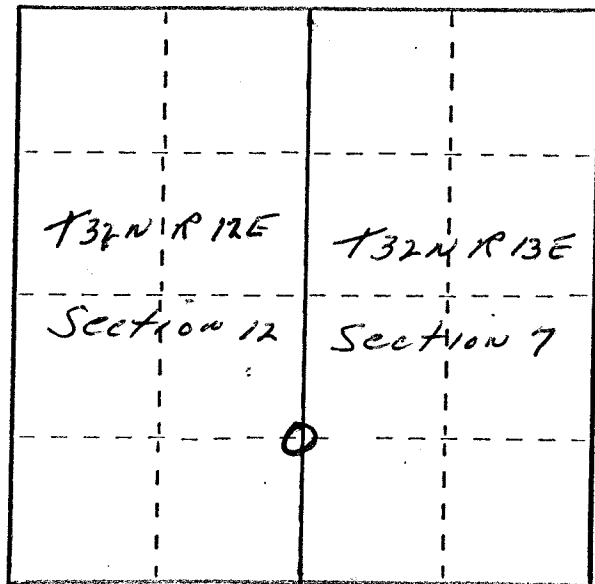
Signature Raymond Hallisy Title Reg. Land Surveyor Registration No. 5-685  
(County Surveyor, Registered Land Surveyor, or other duly authorized official)

Office of Register of Deeds, County of \_\_\_\_\_, I hereby certify that the within instrument was filed in this office for record on the \_\_\_\_\_ day of \_\_\_\_\_, 19\_\_\_\_ at \_\_\_\_\_ o'clock \_\_\_\_\_ M.

(Register of Deeds)

By \_\_\_\_\_ Deputy

FORM 985 M. C. MILLER CO., MILWAUKEE



○ = Corner monument restored.