

CERTIFIED LAND CORNER RESTORATION

32-12

Index No. M-25

State of Wisconsin }  
County of Langlade } ss.

History of original corner establishment:

I Raymond J. Hallisy, do hereby certify that on the 22nd day of June, 19 68, I found evidence of the S 1/16 corner of Section 13 Township 32, North, Range 12, Fourth, Principal Meridian, as described hereon; and that from this evidence I established a new monument and accessories as described hereon to perpetuate the original location of this corner.

Corner set in the 1930's by: E. F. Kowalke  
C. W. Borth

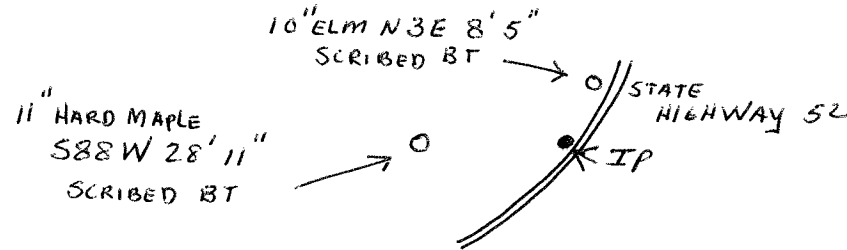
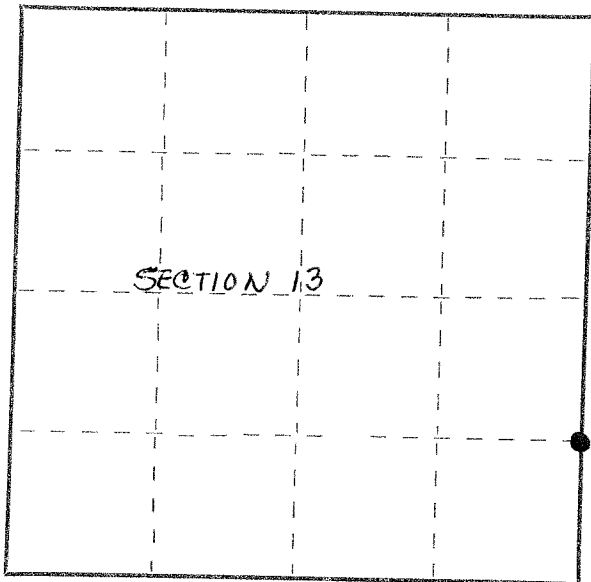
Description of corner evidence found:  
**Found squared stake standing marked WC Cor 50 LKS E S13 S18**

Resident witnesses:

.....  
.....  
.....

Description of monument and accessories I established to perpetuate the original location of this corner.  
**Set std. 1 1/2" pipe with cap marked W.C. C. 50 LKS. E. S 1/16**

FORM 985 H. C. MILLER CO., MILWAUKEE



Dated at Antigo, Wis., this 22nd day of June, 19 68.

Signature Raymond J. Hallisy Title Land Surveyor Registration No. S-685  
(County Surveyor, Registered Land Surveyor, or other duly authorized official)

Office of Register of Deeds, County of \_\_\_\_\_, I hereby certify that the within instrument was filed in this office for record on the \_\_\_\_\_ day of \_\_\_\_\_, 19 \_\_\_\_\_ at \_\_\_\_\_ o'clock \_\_\_\_\_ M.

.....  
(Register of Deeds)

By \_\_\_\_\_ Deputy

○ = Corner monument restored.