

CERTIFIED LAND CORNER RESTORATION

32-12

Index No. M-21

State of Wisconsin }
County of Langlade } ss.

I Raymond J. Hallisy, do hereby certify that on the 20th day of July, 1968, I found evidence of the S 1/16 corner of Section 14 Township 32, North, Range 12, Fourth Principal Meridian, as described hereon; and that from this evidence I established a new monument and accessories as described hereon to perpetuate the original location of this corner.

History of original corner establishment:

Corner set in the 1930's by: D. A. Hintz
Hugh StClarie
C. W. Borth

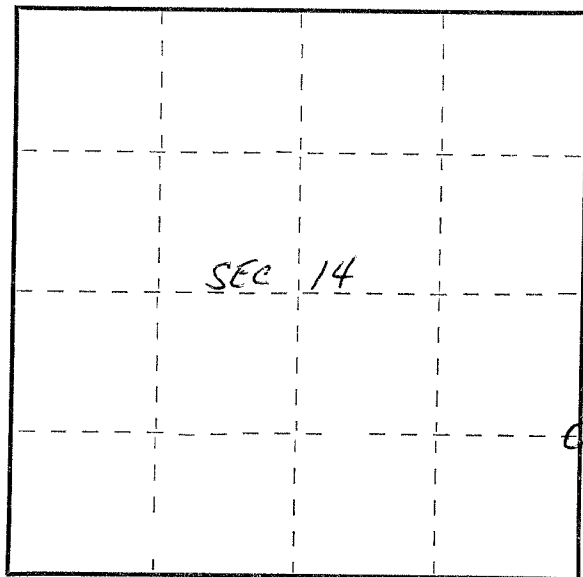
Description of corner evidence found:

Found old stake down, point in ground, marked S 1/16 S13 S14

Resident witnesses:

.....
.....
.....

Description of monument and accessories I established to perpetuate the original location of this corner.
Set Std. 1 1/2" Pipe with cap marked S 1/16 13 14



○ = Corner monument restored.

8" ELM
N39E 43'1"
SCRIBED BT

IP

6" ASPEN
N85E 40'4"
SCRIBED BT

Dated at Antigo, Wis., this 20th day of July, 1968.

Signature Raymond J. Hallisy Title Reg Land Surveyor Registration No. S-685
(County Surveyor, Registered Land Surveyor, or other duly authorized official)

Office of Register of Deeds, County of _____, I hereby certify that the within instrument was filed in this office for record on the _____ day of _____, 19____ at _____ o'clock _____ M.

(Register of Deeds)

By _____ Deputy