

CERTIFIED LAND CORNER RESTORATION

Index No. N-17

State of Wisconsin }  
County of Langlade } ss.

I, Raymond J. Hallisy, do hereby certify that on the 10th day of April, 1982, I found evidence of the Section corner of 15, 14, 22, & 23 Township 32, North, Range 12E, Fourth Principal Meridian, as described hereon; and that from this evidence I established a new monument and accessories as described hereon to perpetuate the original location of this corner.

Resident witnesses:

.....  
.....  
.....

History of original corner establishment:

Corner set in the 1930 resurvey.

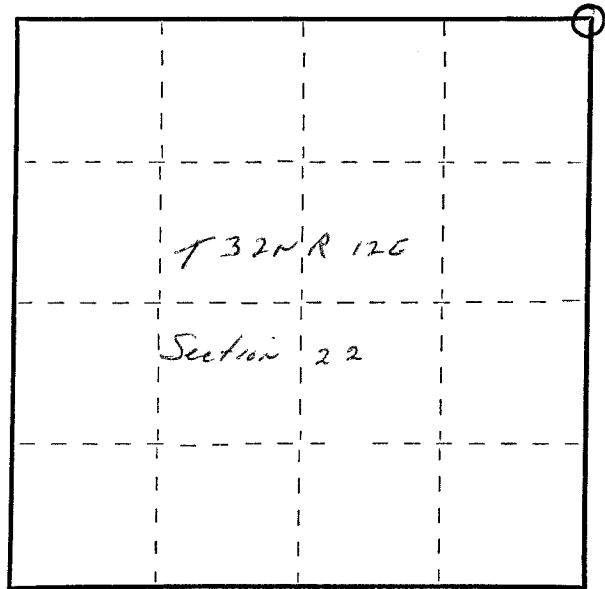
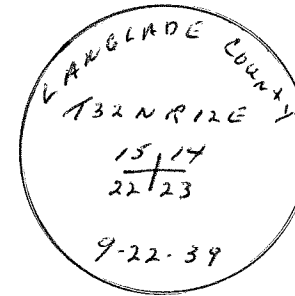
Description of corner evidence found:

4" iron pipe with brass cap.  
BT 20" Hard Maple N16E 32 Links.

Description of monument and accessories I established to perpetuate the original location of this corner.

New BT's

5" Hard Maple S34E 13.9'  
12" Hard Maple S68E 32.6'  
14" Hard Maple N65E 32.3'  
14" Hard Maple S87W 8.7'



○ = Corner monument restored.

Dated at Antigo, Wis., this 10th day of April, 1982.

Signature Raymond J. Hallisy Title Land Surveyor Registration No. S-685  
(County Surveyor, Registered Land Surveyor, or other duly authorized official)

Office of Register of Deeds, County of \_\_\_\_\_, I hereby certify that the within instrument was filed in this office for record on the \_\_\_\_\_ day of \_\_\_\_\_, 19\_\_\_\_ at \_\_\_\_\_ o'clock \_\_\_\_\_ M.

.....  
(Register of Deeds)

By \_\_\_\_\_ Deputy

FORM 985 R. C. MILLER CO., MILWAUKEE