

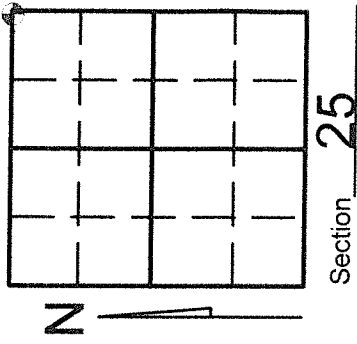
4/22/2015

U.S. PUBLIC LAND SURVEY MONUMENT RECORD

Note: This form is intended and designed to fulfill all requirements of Wisconsin Administrative Code, Chapter A-E 7.08 U.S. Public Land Survey Monument Record (3)(a)(b)(c)(d)(e)(f)(g)(h)(i). An additional sheet may be added if necessary to conform with said requirements.

(a) Corner location: Township 32 North
Range 12 East West

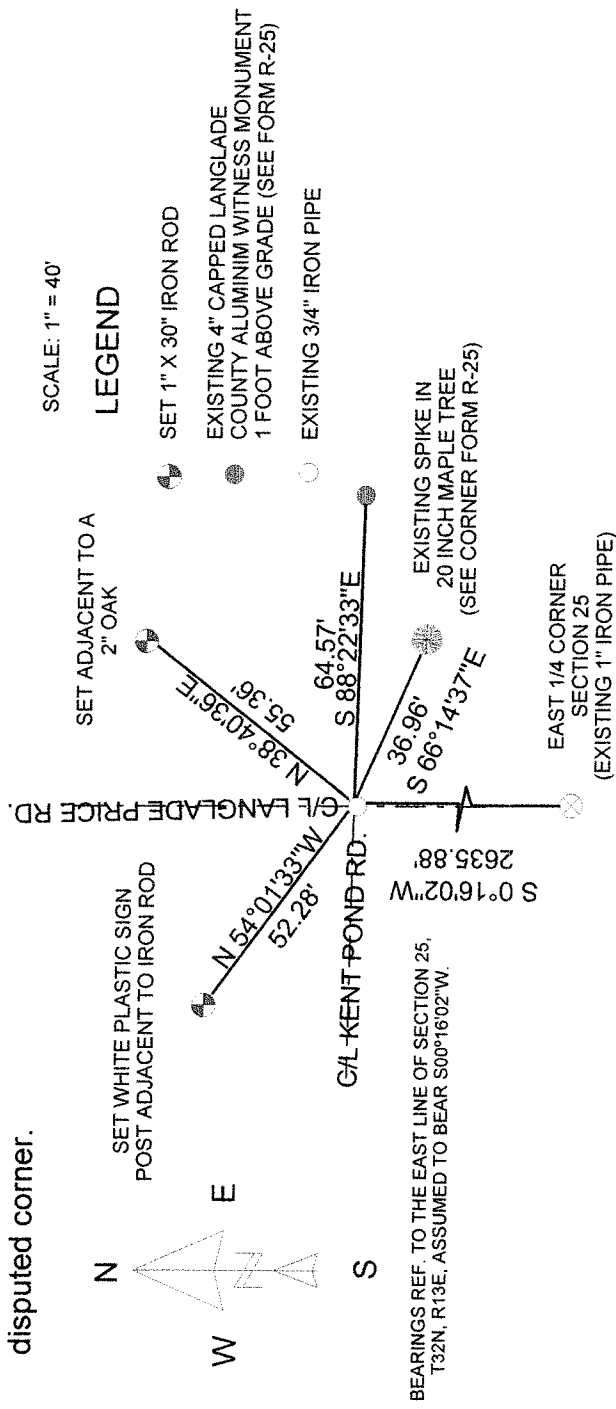
Town/City/Village PRICE
County LANGLADE



(b) (f) (g) (h) Description of monument found at this corner and if it was accepted, state all evidence (material, testimonial, occupational, plats, records, other monuments) used as a basis for accepting. If not accepted or if nothing was found, state evidence used as basis for establishing location. If reestablished through lost corner proportionate methods, indicate all monuments, distances and directions used to establish. Indicate type of monument found or set and sign post.

- 1857- Alfred Millard set original corner
- 1976- William Stuth indicates an iron pipe or cap in his legend for a survey done in section 30, T32N, R13E. Mr. Stuth also indicates a wood post for a witness corner to the northwest corner of said section 30.
- 1988- William Stuth indicates corner by others for the northwest corner of section 30 and shows a distance of 2635.96 feet to the east 1/4 corner of section 30, T32N R13E.
- 1982- William F. Kelley found 3/4" iron pipe; 4" x4" wood post with location tag and 2 bearing trees. Set 3" aluminum capped witness monument as shown on Langlade County Corner form R-25
- 2014- Kevin P. Bixby found a 3/4" iron pipe 5" below grade of Langlade Price Road and the witnesses as shown on corner form R-25, EXCEPT, the bearing tree in the southwest quadrant and witnessed as shown below.

(c) (d) (e) Plan view of corner with ties to at least 4 witness monuments. If in disagreement with previously established corner, show the distances between the two corners and also indicate the ties to the disputed corner.

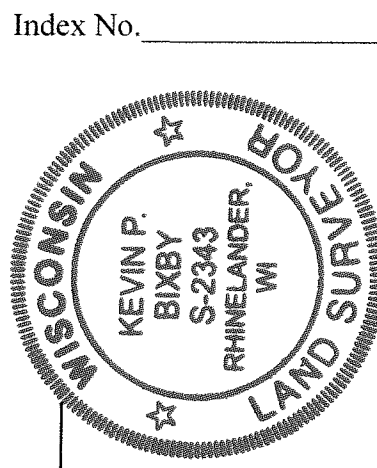


(i) I, KEVIN P. BIXBY

(type or print name) certify that the corner location on this record was determined by me or under my direction and control and that this U.S. Public Land Survey Monument Record is correct and complete to the best of my knowledge and belief.

Kevin P. Bixby
Signature

8/3/15
Date



Stamp

Index No. _____