

CERTIFIED LAND CORNER RESTORATION

32-12

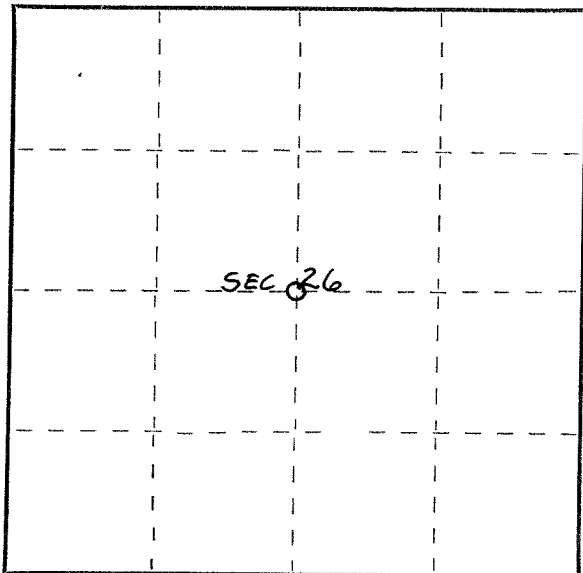
Index No. T-19

State of Wisconsin }  
County of Langlade } ss.

I Raymond J. Hallisy, do hereby certify that on the 5th day of May, 19 69, I found evidence of the Center corner of Section 26 Township 32, North, Range 12E, Fourth, Principal Meridian, as described hereon; and that from this evidence I established a new monument and accessories as described hereon to perpetuate the original location of this corner.

Resident witnesses:

.....  
.....  
.....



○ = Corner monument restored.

History of original corner establishment:

Corner set by M. Hutchinson

Description of corner evidence found:

Found old squared stake down with a steel fence post for corner

~~BY~~ B.T.'s Pine stump 30" N32W  
Pine stump 28" N74E

HUTCHINSON SET CENTER  
F MARKED PINE STUMP 24 N74E 53  
" " 30 N32W 81

Description of monument and accessories I established to perpetuate the original location of this corner.

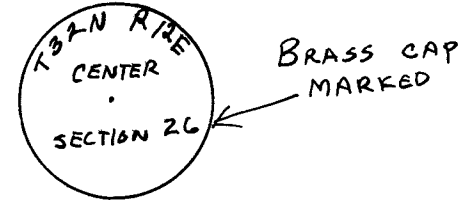
Set 4" brass cap in cement

B.T.'s to corner

Elm 6" N60W 40ft. 3 inches

Elm 6" S50W 27ft. 6 inches

B.T.'s faced at base of tree and scribed BT



Dated at Antigo, Wis., this 5th day of May, 19 69.

Signature Raymond J. Hallisy Title Reg. Land Surveyor Registration No. S-685  
(County Surveyor, Registered Land Surveyor, or other duly authorized official)

Office of Register of Deeds, County of \_\_\_\_\_, I hereby certify that the within instrument was filed in this office for record on the \_\_\_\_\_ day of \_\_\_\_\_, 19 \_\_\_\_\_ at \_\_\_\_\_ o'clock \_\_\_\_\_ M.

.....  
(Register of Deeds)

By \_\_\_\_\_ Deputy