

U.S. PUBLIC LAND SURVEY MONUMENT RECORD

(Prepared and as required by S. A-E 7.08 WI Administrative Code)

The SOUTHEAST corner of Section 33, T. 32 N., R. 12 E., Langlade County, WI

Corner was: (check all that apply)

- Restored through acceptance of an obliterated evidence location.
- Restored through acceptance of a found perpetuated location.
- Determined to be lost and re-established through proportionate methods. (Show bearings and distances to PLSS corners used for proportioning.)
- Restored/recovered/reestablished in a location that differs from a previously established position. (Show difference in plan view below.)

3212330000

- Check here if additional information is shown on the reverse side of this form.

Describe record evidence, recovered physical evidence, occupational evidence, testimonial evidence and all other evidence considered in the recovery/restoration of the corner.

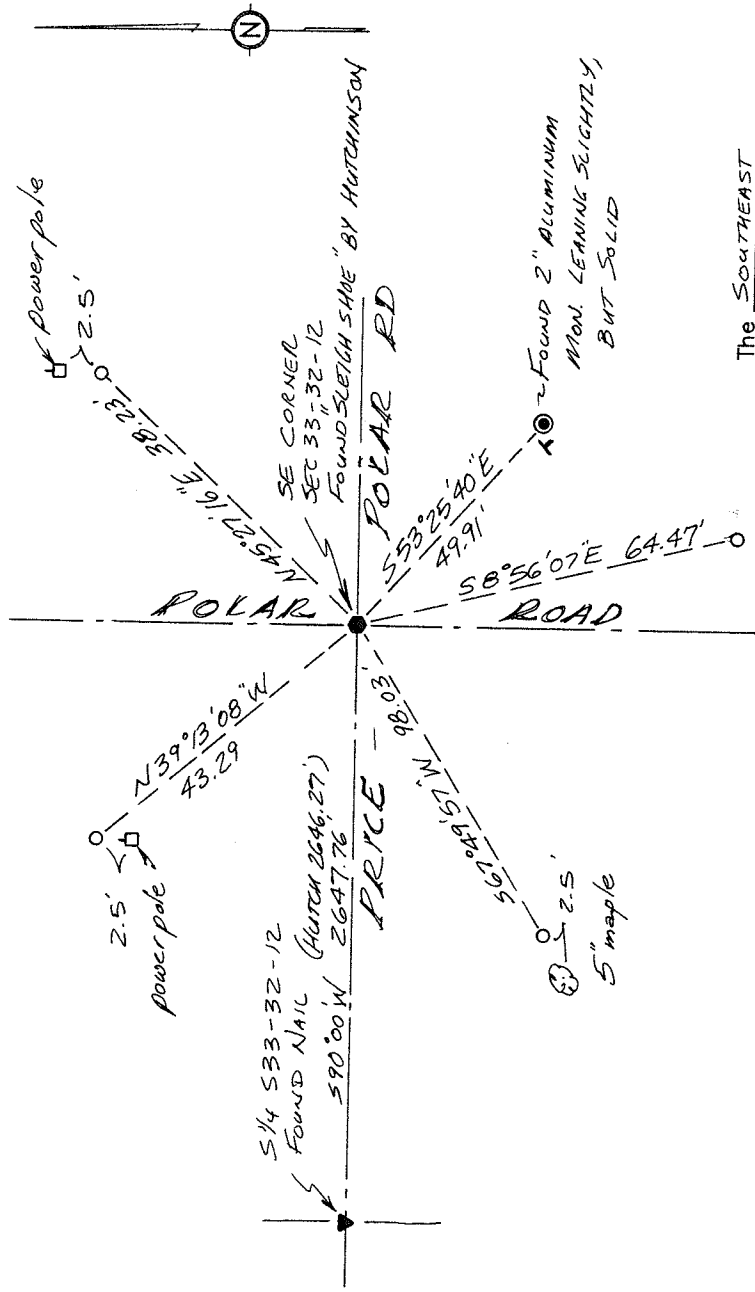
The original corner was established in 1857 by Alfred Millard. Original bearing trees: sugar, 12", N55°W, 15 lks.; fir, 10", N30°E, 45 lks.; fir, 11", S30°E, 13 lks., and a yellow birch, 18", S35°W, 47 lks. April 6, 1914 Malcolm Hutchinson found an old stake in road, set by himself in 1899 and pine stump 36" S48°W 87 lks. He set a sleigh shoe for corner, 3' long bent around on top. December 21, 1983 William F. Kelly set rail road spike over existing iron in road intersection. Set 3" aluminum witness monument and several other ties. July 15, 1998 D. Tlusty, D. Williams found railroad spike and alum. mon. set by Kelly. Set temporary ties and pulled RR spike. Dug by hand and found sleigh shoe (iron, approx. 2.5" wide, upright in ground) with rounded bend on top. Accepted as the best evidence of a perpetuated location of the corner.

Physical description of the monument set:
For the corner I set 30d from temporary ties.

Describe the accessories used to perpetuate the location of the corner. Include a plan view drawing and indicate accessories found/set. Describe measuring point on bearing trees. Show any topographic features that would aid in future recovery of the corner.

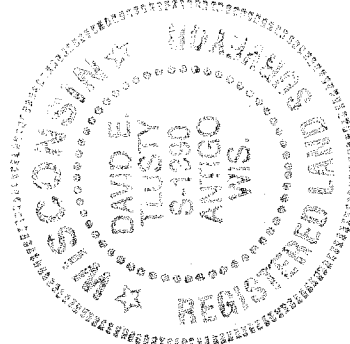
- = 3/4" x 30" rebar with red plastic cap set flush with ground
- ⊥ = white vinyl sign post set

Notes FB14-125



The SOUTHEAST
corner of Section 33
T. 32 N., R. 12 E.
Langlade County, WI

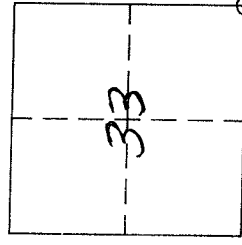
SURVEYORS SEAL



I, DAVID E. TLUSTY, LANGLADE COUNTY SURVEYOR, certify that the corner location shown on this record was determined by me or under my direction and control and that this U.S. Public Land Survey Monument Record is correct and complete to the best of my knowledge and belief.

David E. Tlusty 8/6/98
Signature Date

INDEX No. Z 13
32-12



○ = Location of corner