

CERTIFIED LAND CORNER RESTORATION

Index No. Z-17

State of Wisconsin }
County of LANGLADE } ss.

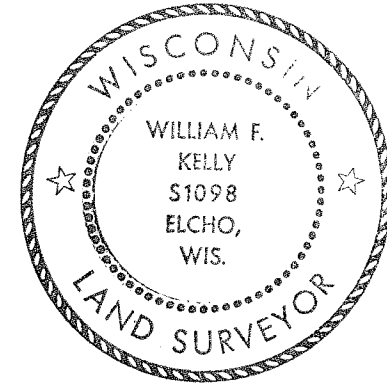
I WILLIAM F. KELLY, do hereby certify that on the 23RD day of DEC., 1981, I found evidence of the SE corner of SEC. 34 Township 32, North, Range 12 EAST, Fourth Principal Meridian, as described hereon; and that from this evidence I established a new monument and accessories as described hereon to perpetuate the original location of this corner.

Resident witnesses:

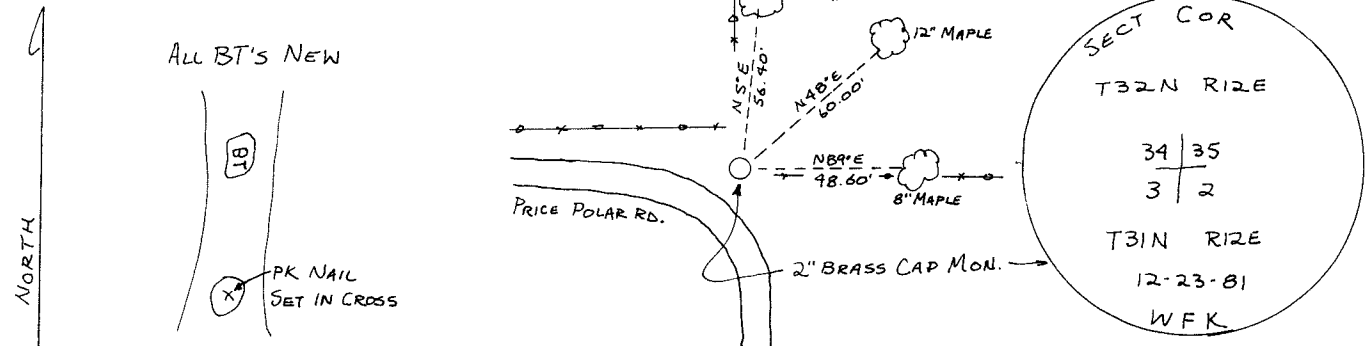
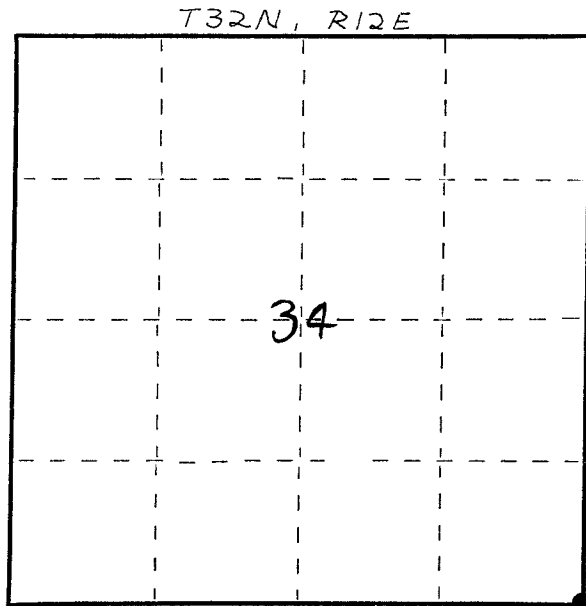
.....
.....
.....

History of original corner establishment:
ORIGINAL CORNER ESTABLISHED BY
JAMES McBRIDE IN NOV-DEC, 1857.

Description of corner evidence found:
REPLACED 1/4" IRON PIPE AND
1"x1" IRON BAR SET IN STONE
WITH A 2"x42" BLACK IRON PIPE
WITH BRASS CAP MONUMENT.
MARKED 3 NEW BT'S.



Description of monument and accessories I established to perpetuate the original location of this corner.



Dated at ELCHO, Wis., this 23RD day of DEC., 1981.

Signature William F. Kelly Title COUNTY SURVEYOR Registration No. 1098
(County Surveyor, Registered Land Surveyor, or other duly authorized official)

Office of Register of Deeds, County of....., I hereby certify that the within instrument was filed in this office for record on the..... day of....., 19..... at..... o'clock..... M.

(Register of Deeds)

By..... Deputy

○ = Corner monument restored.

FORM 985 H. C. MILLER CO., MILWAUKEE