

CERTIFIED LAND CORNER RESTORATION

Index No. 22-25

32-12

State of Wisconsin }
 County of Lafayette } ss.

I, Raymond J. Hallisy, do hereby certify that on the 15th day of April, 1979, I found evidence of the Section corner of 36, 31, 1, & 6 Township 31 & 32, North, Range 12E & 13E, Fourth Principal Meridian, as described hereon; and that from this evidence I established a new monument and accessories as described hereon to perpetuate the original location of this corner.

Resident witnesses:

.....

History of original corner establishment:

Govt. distance to swamp 11.00 chains West.

Description of corner evidence found:

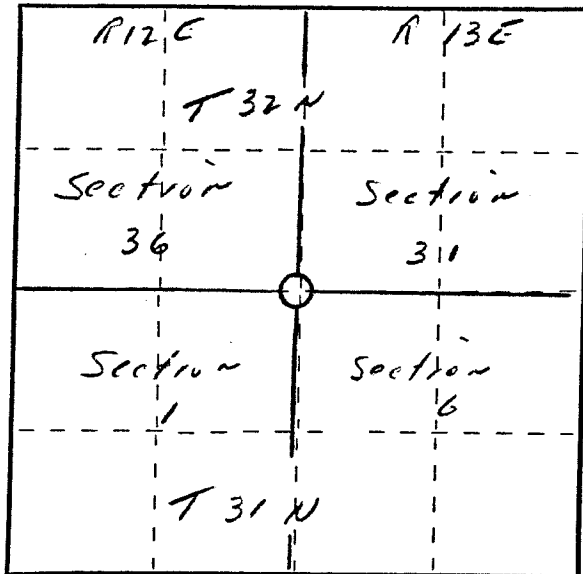
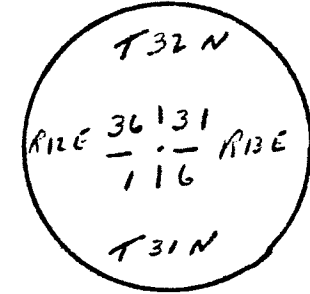
Measured North from 1/4 to 1 & 6 T31N R12 & R13E, 39.46 Chains, Hutchinson's distance. Found his fine stump PT's

36" N61W 55.5 Links
 24" S74E 80.75 Links

Description of monument and accessories I established to perpetuate the original location of this corner.

Set 2" pipe with brass cap from old PT's
 New PT's

6" Palson N79W 13.1 Ft.
 12" Elm N24W 6.1 Ft.
 8" Cherry S39E 24.2 Ft.
 4" Hard Maple S32W 21.6 Ft.



○ = Corner monument restored.

Dated at Antigo, Wis., this 15th day of May, 1979

Signature Raymond J. Hallisy Title Reg. Surveyor Registration No. S-685
 (County Surveyor, Registered Land Surveyor, or other duly authorized official)

Office of Register of Deeds, County of _____, I hereby certify that the within instrument was filed in this office for record on the _____ day of _____, 19____ at _____ o'clock _____ M.

(Register of Deeds)

By _____ Deputy

FORM 985 H. C. MILLER CO., MILWAUKEE