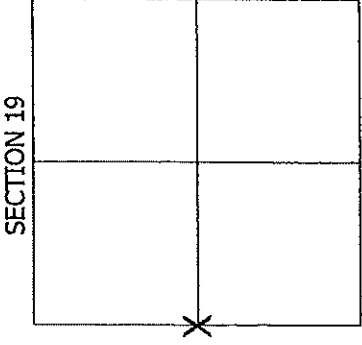


4321524 2000 2025

LANGLADE COUNTY U.S. PUBLIC LAND SURVEY MONUMENT LOCATION RECORD

FOUND SECTION 19
SET TOWNSHIP 32 NORTH
RE-SET RANGE 14 EAST
RE-TIED TOWN OF WOLF RIVER

CORNER LOCATION: WEST QUARTER CORNER
MONUMENT TYPE: 2" X 30" ALUM. PIPE WITH 3" ALUM. CAP
COUNTY COORDINATE: (N 376951.84) (E 710299.29)
HORIZONTAL DATUM: WCCS LANGLADE CO. NAD83 2011
DATE OF SURVEY: 11-5-2024
SURVEY PARTY: JASON J. PFLIEGER



BASIS FOR MONUMENT LOCATION:

1857: ORIGINAL CORNER WAS ESTABLISHED BY ALFRED MILLARD.

2024: I SEARCHED FOR THE CORNER AND FOUND NOTHING. CSM 1-260 DATED 1978 MONUMENTED THE SOUTH LINE OF THE NW1/4 AND CSM 3-185 DATED 1985 MONUMENTED THE WEST LINE OF THE NW1/4. BOTH SURVEYS WERE DONE BY WESLEY TRADEWELL. I FOUND MONUMENTS FROM BOTH SURVEYS ALONG SAID LINES AND EXTENDED THE LINES TO WHERE THEY INTERSECTED AND HELD THAT LOCATION AS THE WEST QUARTER CORNER. I SET A LANGLADE COUNTY MONUMENT AND ADDED 4 NEW TIES.

SURVEYORS CERTIFICATE

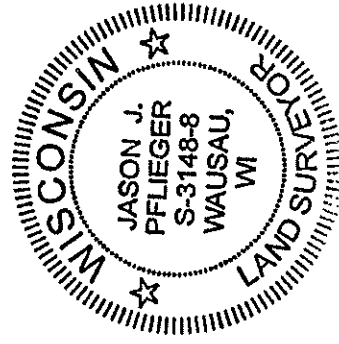
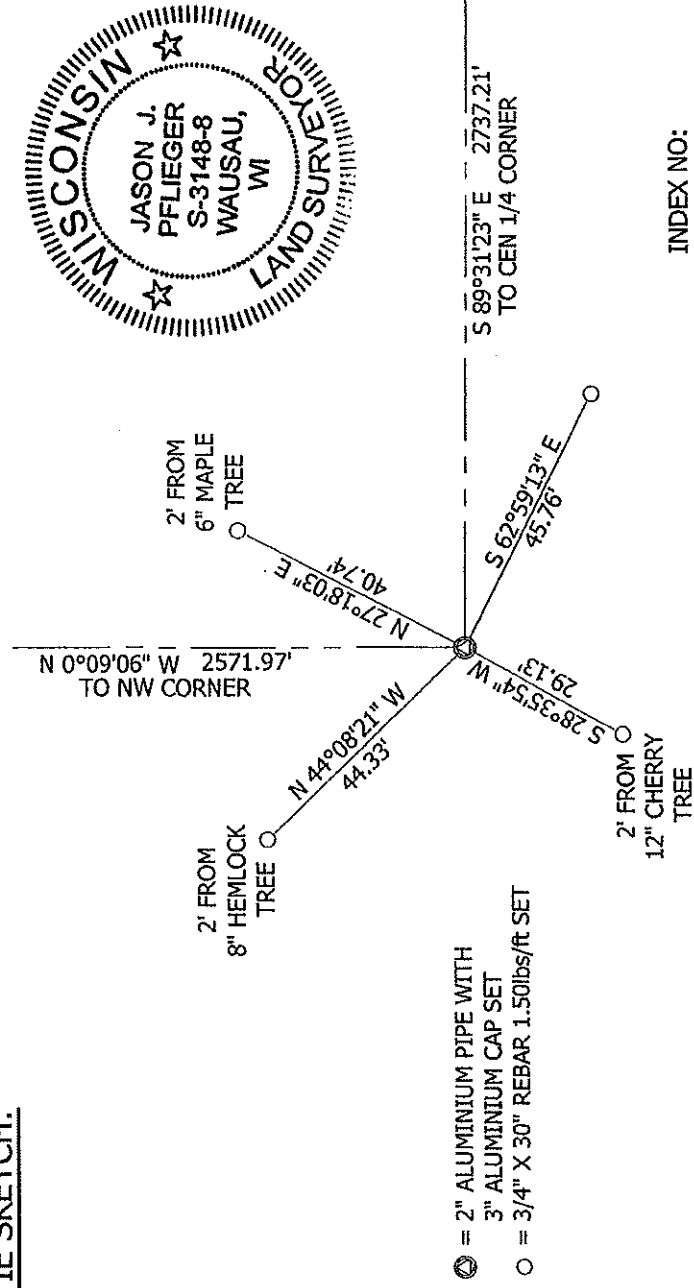
I, JASON J. PFLIEGER, PROFESSIONAL LAND SURVEYOR S-3148-8, DO HEREBY CERTIFY THAT THE CORNER LOCATION SHOWN ON THIS RECORD WAS DETERMINED BY ME AND THAT THE U.S. PUBLIC LAND SURVEY MONUMENT RECORD IS CORRECT TO THE BEST OF MY KNOWLEDGE AND BELIEF.

J. Pflieger

DATED THIS 15TH DAY OF JANUARY, 2025

JASON J. PFLIEGER P.L.S. 3148-8

TIE SKETCH:



P25 32-13

INDEX NO: