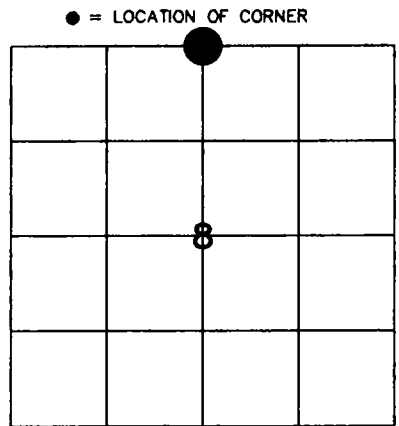


U.S. PUBLIC LAND SURVEY MONUMENT RECORD

43214050020

HISTORY OF ORIGINAL CORNER ESTABLISHMENT AND SUBSEQUENT RESTORATION AND DESCRIPTION OF ANY RECORD, MONUMENT OCCUPATIONAL, TESTIMONIAL OR OTHER EVIDENCE CONSIDERED:

THE ORIGINAL CORNER WAS SET BY ARTEMAS CURTIS IN MARCH OF 1857, HE HAD BEARING TREES OF
 16" HEMLOCK S75°W - 10 LKS
 12" HEMLOCK N37°E - 12 LKS
 WE RESET THIS CORNER BY SINGLE PROPORTION. THE ORIGINAL DISTANCE THAT CURTIS HAD ALONG THE NORTH LINE OF SECTION 8 WAS 5219.28' (79.08 CHNS) WE HAD MEASURED 5220.34'. WE PLACE A 2" X 30" LANGLADE COUNTY MONUMENT WITH BRASS CAP AT THE SINGLE PROPORTION DISTANCE.

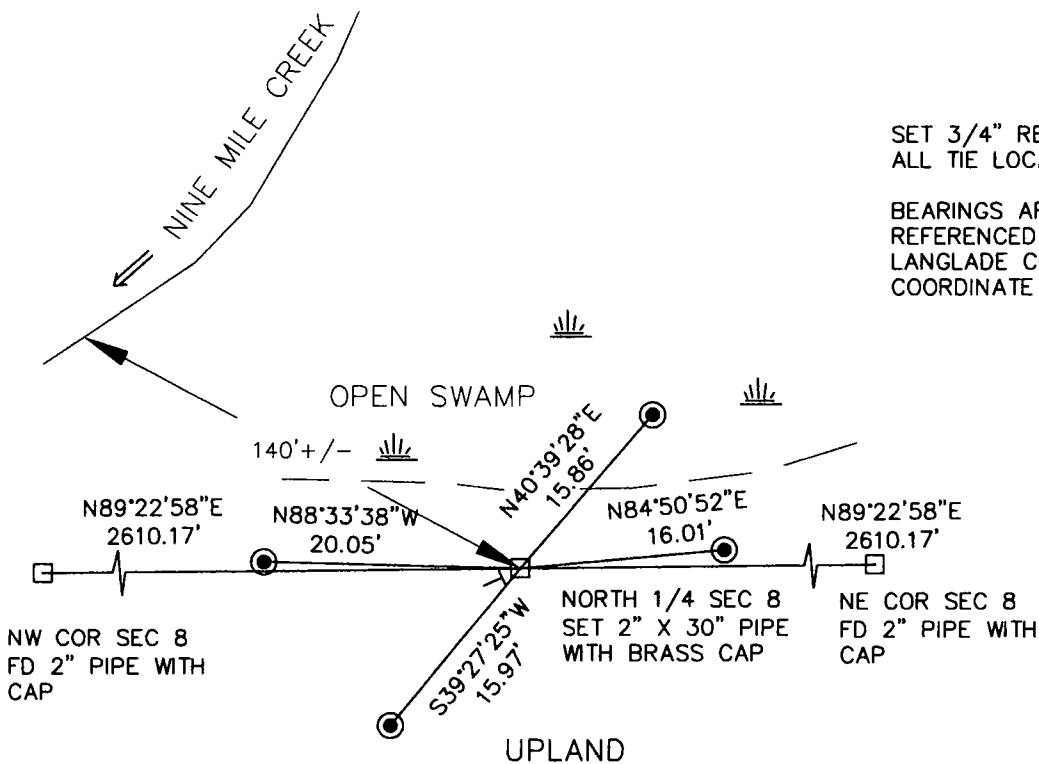


32 SECTION 8
 TOWNSHIP ~~X~~ NORTH, RANGE 14 EAST
 TOWN OF WOLF RIVER
 LANGLADE COUNTY, WISCONSIN

CORNER WAS: (CHECK ALL THAT APPLY)

- RESTORED THROUGH ACCEPTANCE OF AN OBLITERATED EVIDENCE LOCATION
- RESTORED THROUGH ACCEPTANCE OF A FOUND PERPETUATED LOCATION
- CONSIDERED A LOST CORNER AND REESTABLISHED THROUGH LOST CORNER PROPORTIONATE METHODS (INCLUDE A PLAN VIEW DRAWING SHOWING DISTANCES AND DIRECTIONS TO OTHER PUBLIC LAND SURVEY CORNERS USED FOR PROPORTIONING AND DETERMINING THE CORNER LOCATION)
- RESTORED OR REESTABLISHED IN A LOCATION THAT DIFFERS FROM A PREVIOUS RESTORATION OR REESTABLISHMENT (INCLUDE A PLAN VIEW DRAWING AND INDICATE WHAT WAS SET AND/OR FOUND)
- CHECK IF THERE IS ADDITIONAL INFORMATION ON BACK

DESCRIBE THE MONUMENT AND ACCESSORIES USED TO PERPETUATE THE LOCATION OF THE CORNER. (INCLUDE A PLAN VIEW DRAWING AND INDICATE WHAT WAS SET AND/OR FOUND) ALSO INCLUDE FOUR TIES TO THE SECTION CORNER AND DESCRIPTION OF THE TIES.



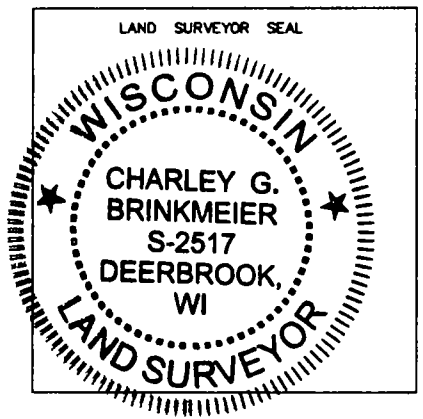
SET 3/4" RE-BARS AT ALL TIE LOCATIONS

BEARINGS ARE REFERENCED TO THE LANGLADE COUNTY COORDINATE SYSTEM



CHARLEY G. BRINKMEIER
 (type or print name) CERTIFY THAT THE CORNER LOCATION SHOWN ON THIS RECORD WAS DETERMINED BY ME OR UNDER MY DIRECTION AND CONTROL AND THAT THIS U.S. PUBLIC LAND SURVEY MONUMENT RECORD IS CORRECT AND COMPLETE TO THE BEST OF MY KNOWLEDGE AND BELIEF.

Charley G. Brinkmeier
 SIGNATURE _____ DATE _____



INDEX NO. E7 32-14