

U.S. PUBLIC LAND SURVEY MONUMENT RECORD

(Prepared and as required by S. A-E 7.08 WI Administrative Code)

43214 06 2000

The West Quarter Corner of Section 5, T. 32 N., R. 14 E., Langlade County, WI

Corner was: (check all that apply)

- Restored through acceptance of an obliterated evidence location.
- Restored through acceptance of a found perpetuated location.
- Determined to be lost and re-established through proportionate methods.
(Show bearings and distances to PLSS corners used for proportioning.)
- Restored/recovered/reestablished in a location that differs from a previously established position. (Show difference in plan view below.)
- Check here if additional information is shown on the reverse side of this form.

Describe record evidence, recovered physical evidence, occupational evidence, testimonial evidence and all other evidence considered in the recovery/restoration of the corner.

The original corner was established in 1857 by Alfred Millard.

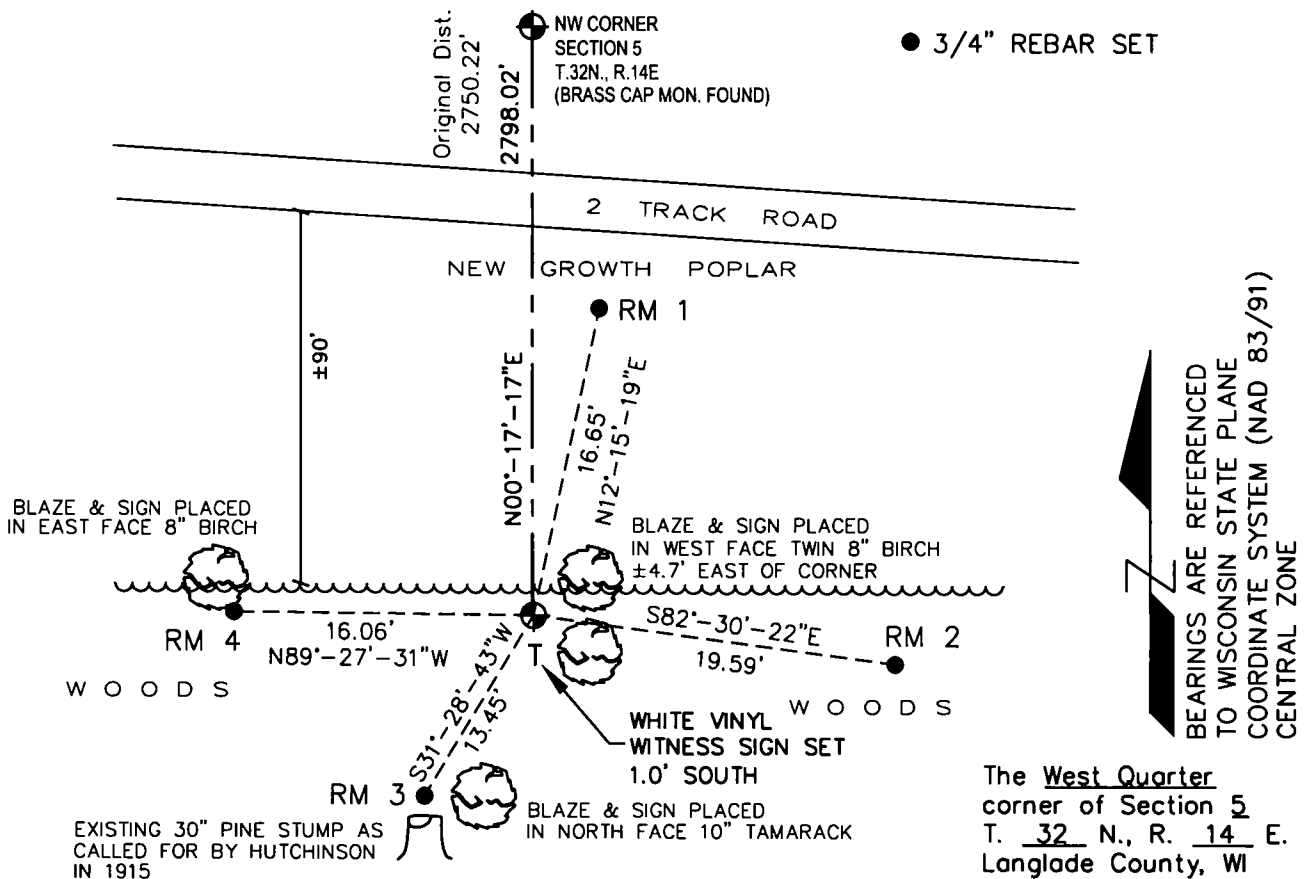
Original Bearing Trees; Sugar 12" N82°W 6 Links, and a Sugar 14" S48°E 29 Links.

In 1915 Malcom Hutchinson described the corner and placed a 1-1/2" Iron Pipe at the location. He references a new 30" Pine stump at S24°W 20-1/2 Links. I recovered the 1-1/2" Iron Pipe and found the 30" Pine stump as called for. I accepted this location and replaced the Iron Pipe with a 2"X30" Iron Pipe and Brass Cap

Physical description of the monument set:

I set a 2" X 30" Iron Pipe with Brass Cap at corner.

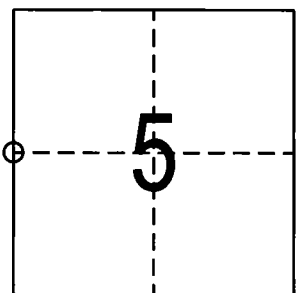
Describe the accessories used to perpetuate the location of the corner. Include a plan view drawing and indicate accessories found/set. Describe measuring point on bearing trees. Show any topographic features that would aid in future recovery of the corner.



The West Quarter corner of Section 5, T. 32 N., R. 14 E., Langlade County, WI

I, CRAIG A. KEACH S-2333
 certify that the corner location on this record was determined by me or under my direction and control and that this U.S. Public Land Survey Monument Record is correct and complete to the best of my knowledge and belief.

Craig A. Keach 10/23/06
 Signature Date



O = Location of corner

INDEX No. C5 - 32-14