

CERTIFIED LAND CORNER RESTORATION

Index No. N-11

State of Wisconsin }
County of LANGLADE } ss.

I WILLIAM F. KELLY, do hereby certify that on the 7th day of JANUARY, 1983, I found evidence of the S. 14 corner of SECT. 16 Township 32, North, Range 14 EAST, Fourth Principal Meridian, as described hereon; and that from this evidence I established a new monument and accessories as described hereon to perpetuate the original location of this corner.

Resident witnesses:

.....
.....
.....

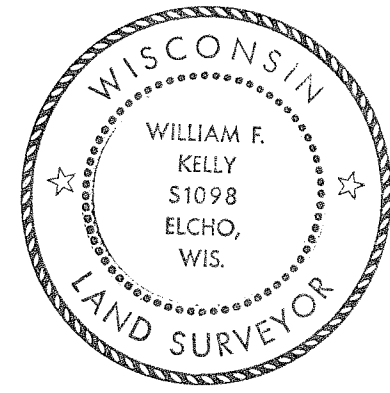
History of original corner establishment:

ORIGINAL MONUMENT ESTABLISHED BY
ALFRED MILLARD IN SEPT., 1857.

Description of corner evidence found:

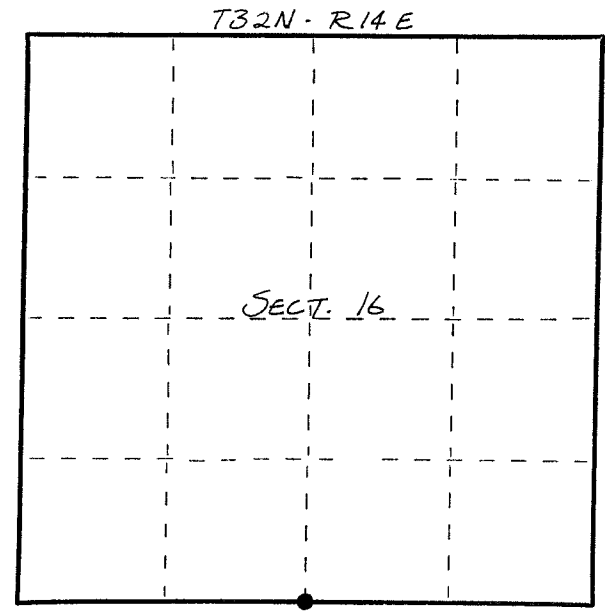
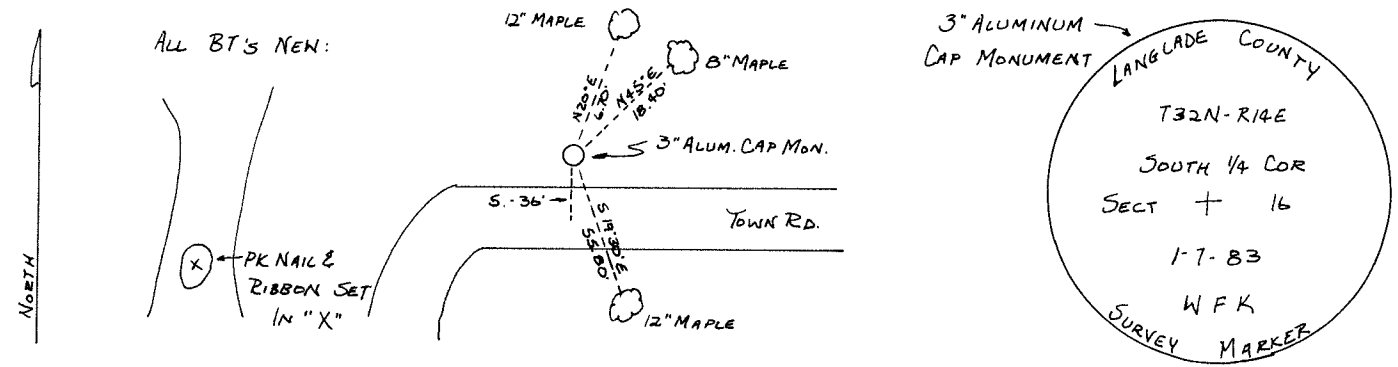
REPLACED EXISTING 1"x30" IRON PIPE WITH
A 3"x42" ALUMINUM MONUMENT. SET 1" I.P.
NEXT TO ALUM. MON. FOR METAL READING.

3/16/36: JOHN REPTA (CCC) LOCATED 4x4x24
HEMLOCK POST IN GOOD CONDITION.



William F. Kelly

Description of monument and accessories I established to perpetuate the original location of this corner.



○ = Corner monument restored.

Dated at ELCHO, Wis., this 7th day of JANUARY, 1983.

Signature William F. Kelly Title COUNTY SURVEYOR Registration No. 1098
(County Surveyor, Registered Land Surveyor, or other duly authorized official)

Office of Register of Deeds, County of....., I hereby certify that the within instrument was filed in this office for record on the..... day of....., 19..... at..... o'clock..... M.

.....
(Register of Deeds)

By..... Deputy

FORM 985 R. C. MILLER CO., MILWAUKEE