

4321425 0000 2017

**U.S. PUBLIC LAND SURVEY MONUMENT RECORD**

Note: This form is intended and designed to fulfill all requirements of Wisconsin Administrative Code, Chapter A-E 7.08 U.S. Public Land Survey Monument Record (3)(a-4).

(a) CORNER LOCATION  
 Cor. of Secs. 25, 30, 31 & 36  
 Township 32 North  
 Range 14 & 15 East of the 4th P.M.  
 Town of Wolf River/Doty  
 County of Langlade/Oconto

WISCRS - Langlade County  
 N: 369,404.22 USft  
 E: 742,107.44 USft  
 Datum: NAD 83(2011)  
 GNSS Method: Real-Time Network  
 GNSS Control: WISCORS VRS

	SEC. 25		
	T32N R14E		

(b) HISTORY OF ORIGINAL CORNER ESTABLISHMENT

Original Surveyor: Artemas Curtis

Original Accessories:

Date of Survey      Commenced: June, 1857  
 Completed: July, 1857

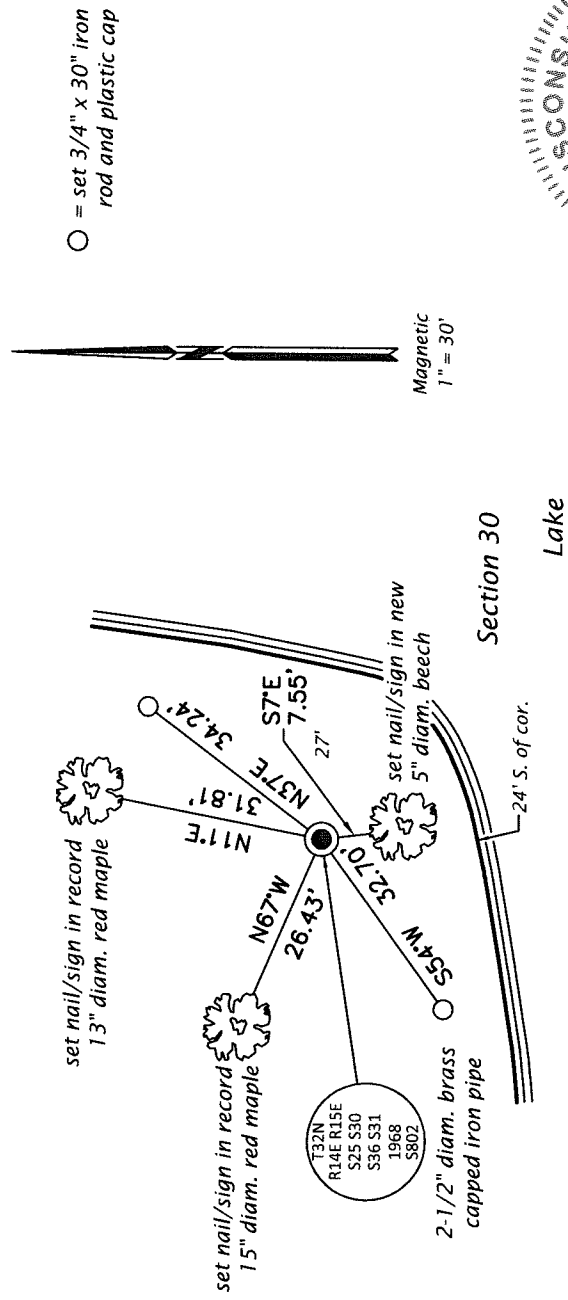
Y. Birch 14" S47°W, 53 lks.  
 Beech 10" N65°W, 20 lks.  
 Hemlock 12" N54°E, 64 lks.  
 Tamarack 10" S68°E, 42 lks.

(b)(f)(g)(h) Description of monument found at this corner and if it was accepted, state all evidence (material, testimonial, occupational, plats, records, other monuments) used as a basis for accepting. If not accepted or if nothing was found, state evidence used as basis for establishing location. If re-established through lost corner proportionate methods, indicate all monuments, distances and directions used to establish. Indicate type of monument and sign post found or set.

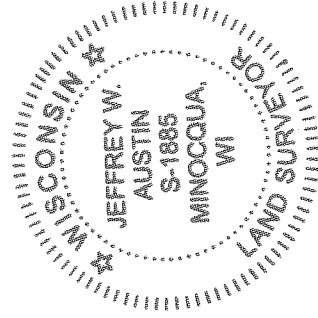
*This is a perpetuation of a previous USPLS Monument Record by John C. Schulke, RLS dated November 2, 1987 and filed in the office of the Oconto County Register of Deeds. A complete history of the corner can be found on the previous monument record. I accept the previous location as a true and faithful perpetuation or reestablishment of the original corner location and further perpetuate it as follows.*

*November 29, 2016: I found and accepted the record monument, a 2-1/2" diam. iron pipe with a 3" diam. brass cap projecting 24" above the ground surface. The record yellow birch is now standing dead. The record trees at S13°E and N37°E are both gone. I found or established accessories as shown below. I set a white vinyl sign post bearing Northeast, 1 ft.*

(c)(d)(e) Plan view of corner with ties to at least 4 witness monuments. If in disagreement with previously established corner, show the distances between the two corners and also indicate the ties to the disputed.



(i) I, Jeffrey W. Austin, Professional Land Surveyor No. S-1885, hereby certify that the corner location on this record was determined by me or under my direction and control and that this U.S. Public Land Survey Monument Record is correct and complete to the best of my knowledge and belief.



*[Signature]*  
 \_\_\_\_\_  
 Date      MAY 6, 2017